



MITSUBISHI ELECTRIC AUTOMATION (THAILAND) CO., LTD.
 Bang-Chan Industrial Estate No. 111 Moo 4, Serithai Rd., T.Kannayao, A.Kannayao, BKK 10230 Thailand
 Tel: (66) 2517-1326, (66) 2919-9873 Fax: (66) 2517-1328 URL: www.meath-co.com E-mail: support@meath.co.th
บริษัท มิตซูบิชิ อิเล็กทริก ออโตเมชัน (ประเทศไทย) จำกัด
 นิคมอุตสาหกรรมบางชัน เลขที่ 111 หมู่ 4 ถนนเสรีไทย แขวงคันนายาว เขตคันนายาว กทม. 10230
 โทรศัพท์: (66) 2517-1326, (66) 2919-9873 โทรสาร: (66) 2517-1328 URL: www.meath-co.com E-mail: support@meath.co.th

MOTOR SPECIFICATION SHEET

MODEL : SF-PRB 18.5kW 4P
 USED FOR : 380V 50Hz
 MANUFACTURER : MITSUBISHI ELECTRIC CORPORATION

| DESCRIPTION | DETAIL |
|---|---|
| PHASE | 3 |
| MODEL NAME | SF-PRB |
| RATED OUTPUT | 18.5 kW |
| POLE | 4 |
| CODE | MEATH CODE : 1MU00F-401850PBLT0 |
| OUTLINE DRAWING NO. | BD39542-* |
| RATED VOLTAGE (V) | 380 |
| RATED FREQUENCY (Hz) | 50 |
| RATED CURRENT (A) | 35.5 |
| RATED SPEED (min ⁻¹) | 1475 |
| RATED EFFICIENCY | 93.8% |
| EFFICIENCY CLASS | IE3 |
| THERMAL CLASS | 130 (B) |
| RATING | S1 (CONTINUOUS) |
| ENCLOSURE CONSTRUCTION | TOTALLY ENCLOSED FAN COOLED |
| DEGREES OF PROTECTION | IP44 |
| METHOD OF COOLING | IC411 |
| FRAME NO. | 180M |
| WEIGHT (kg) | 195 |
| STANDARD | JIS C 4213, JEC-2137-2000 |
| INSTALLATION | FOOT MOUNTED |
| ROTATION | CCW (VIEWED FROM SHAFT END) |
| BEARING | LOAD SIDE : 6213ZZ |
| | OPPOSITE SIDE : 6310ZZ |
| BEARING GREASE | UREA GREASE |
| NOISE (dB.A)* | 66 |
| VIBRATION | V15 |
| CIRCUMSTANCE CONDITION | AMBIENT TEMPERATURE : -20 ~ +40°C |
| | AMBIENT HUMIDITY : 85% RH (NO CONDENSATION) |
| | ABOVE SEA LEVEL : 1000m OR BELOW |
| | ENVIRONMENT : NO CORROSIVE/EXPLOSIVE GAS, NO STEAM OR CONDENSATION, MINIMAL DUST. |
| COLOR | MUNSELL N7 (GRAY) |
| TERMINAL BOX | NO. OF LEAD WIRES : MOTOR = 6 , BRAKE = 2 |
| | SOURCE CONNECTION : LEAD WIRES |
| SHAFT SWING | ≤0.05mm |
| MATERIAL | FRAME : STEEL PLATE |
| | BRACKET LOAD SIDE : ALUMINIUM |
| | OPPOSITE SIDE : CAST IRON |
| | SHAFT : CARBON STEEL |
| | STATOR CORE : ELECTRICAL STEEL |
| | WIRE : ENAMELLED COPPER MAGNET WIRE |
| | ROTOR CORE : ELECTRICAL STEEL |
| | CONDUCTOR : ALUMINIUM |
| | TERMINAL BOX : STEEL PLATE |
| | PAINTING : ACRYLIC RESIN |
| | BRAKE |
| RATED BRAKING TORQUE : 300 N.m | |
| POWER SUPPLY UNIT : PROVIDED BY CUSTOMER. (REFER TO OUTLINE DRAWING.) | |
| PRODUCTION COUNTRY | JAPAN |

*Value indicates representative value, not guaranteed value.

Specifications subject to change without notice.

| | | | | |
|--------------------------------|--|--|--|--|
| SPECIFICATION SHEET NO. | | | | |
| SS-M-3697-A | | | | |

TYPE SF-PRB SUPER-LINE THREE PHASE INDUCTION MOTOR

OUT LINE
DIMENSION IN mm

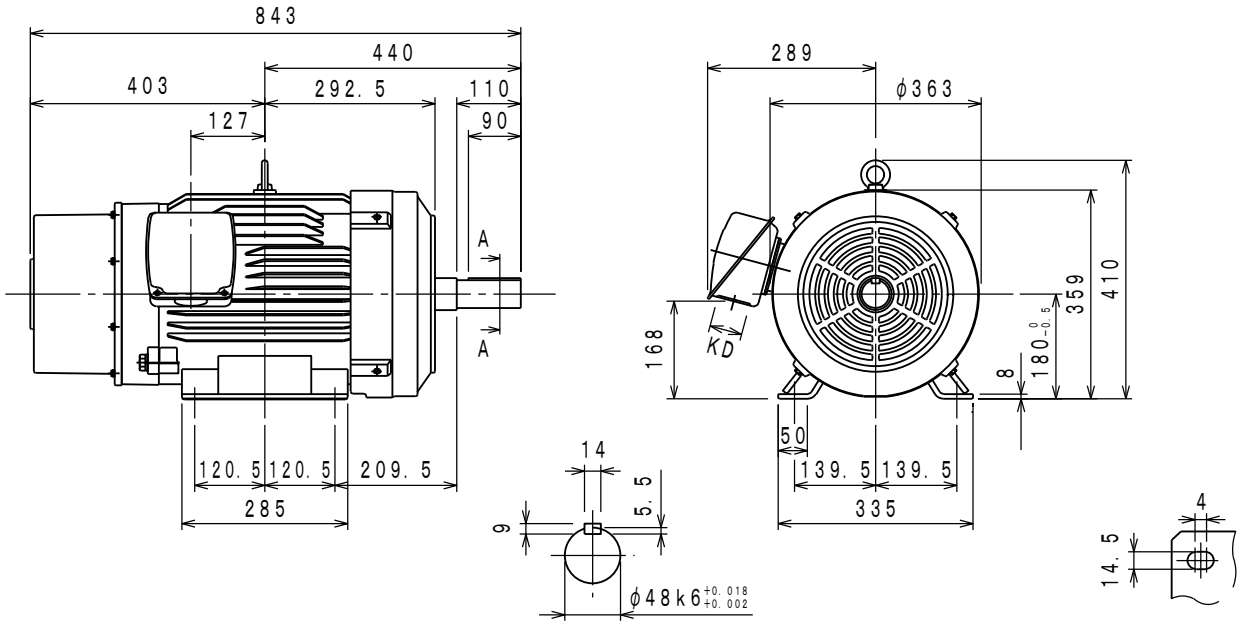
INDOOR USE TYPE

TOTALLY ENCLOSED FAN COOLED
PROTECTION DEGREE: IP44, COOLING METHOD: IC411
BRAKE (PROTECTION DEGREE: IP44)
WITH TYPE ESB-220 ELECTRO MAGNETIC BRAKE
VOLT: D. C 90V, BRAKING TORQUE: 300N·m FRAME NO. 180M

CUSTOMER _____
USER _____
FOR _____
CUST' S ORDER NO. _____
QUANTITY _____ UNIT (S) _____
MFG ORDER NO. _____

| YOUR ORDER | kW·POLES | VOLT | HERTZ | MASS kg/UNIT | STYLE NO. |
|------------|-----------|------|-------|--------------|-----------|
| | 18.5kW 4P | 380V | 50Hz | 195 | |

| IE Code-Rated Eff | |
|-------------------|-----------|
| 18.5kW 4P | IE3-93.8% |



SECTION AA

PLANE VIEW OF FOOT

| | RATING | TH. CLASS | AMB. TEMP | BEARINGS | | NO. OF TERMINALS | | VIEWED FROM DRIVE END | | COLOUR | KD | BRAKING TORQUE |
|--|--------|-----------|-----------|-----------|---------------|------------------|-------|-------------------------|----------|------------|--------|----------------|
| | | | | LOAD SIDE | OPPOSITE SIDE | MOTOR | BRAKE | DIRECT. OF TERMINAL BOX | ROTATION | | | |
| | S 1 | 130 (B) | 40° C | 6213ZZ | 6310ZZ | 6 | 2 | A (LEFT) | CCW | MUNSELL N7 | phi 56 | ABOVE 150% |

1. THE POWER-SUPPLY UNIT FOR THE BRAKE IS NOT ATTACHED. PLEASE ARRANGE BY YOU, AND INSTALL IT IN THE CONTROL BOARD.
2. THE TYPE OF POWER-SUPPLY UNIT IS GIVEN BELOW. THE BRAKE CAN BE USED WITH DC90V. THE OTHER TYPES OF POWER SUPPLY UNIT CAN HEAT THE BRAKE COIL AND SHORTEN ITS LIFE SPAN.

TYPE: HD-120M (OSAKI ELECTRIC CLUTCH BRAKE Co., Ltd.)

INPUT: SINGLE PHASE AC200V/220V

OUTPUT (BRAKE INPUT): DC180V WHEN RELEASING THE BRAKE

DC 45V WHEN KEEPING THE RELEASING OF THE BRAKE } INPUT AC200V LOAD RUNNING

3. PLEASE GIVE SINGLE PHASE AC200V FOR THE BRAKE POWER-SUPPLY UNIT.

| | | |
|--|-------------------|----------|
| | DRAWN | APPROVED |
| | SCALE NTS | |
| | DATE Mar. 14. '19 | |

CAD (2D)

MITSUBISHI ELECTRIC CORP., JAPAN
NAGOYA WORKS

| | | | |
|--------|--|--|--|
| CHANGE | | | |
| | | | |
| | | | |

図面番号
DWG. NO. BD39542-*