

**MOTOR SPECIFICATION SHEET**

MODEL : SF-PRB 37kW 4P  
USED FOR : 380V 50Hz  
MANUFACTURER : MITSUBISHI ELECTRIC CORPORATION

DESCRIPTION	DETAIL
PHASE	3
MODEL NAME	SF-PRB
RATED OUTPUT	37 kW
POLE	4
CODE	
OUTLINE DRAWING NO.	BD39545-*
RATED VOLTAGE (V)	380
RATED FREQUENCY (Hz)	50
RATED CURRENT (A)	71
RATED SPEED (min <sup>-1</sup> )	1480
RATED EFFICIENCY	94.9%
EFFICIENCY CLASS	IE3
THERMAL CLASS	155 (F)
RATING	S1 (CONTINUOUS)
ENCLOSURE CONSTRUCTION	TOTALLY ENCLOSED FAN COOLED
DEGREES OF PROTECTION	IP44
METHOD OF COOLING	IC411
FRAME NO.	200LD
WEIGHT (kg)	345
STANDARD	JIS C 4213, JEC-2137-2000
INSTALLATION	FOOT MOUNTED
ROTATION	CCW (VIEWED FROM SHAFT END)
BEARING	LOAD SIDE : 6313ZZ OPPOSITE SIDE : 6312ZZ
BEARING GREASE	UREA GREASE
NOISE (dB.A)*	73
VIBRATION	V15
CIRCUMSTANCE CONDITION	AMBIENT TEMPERATURE : -20 ~ +40°C AMBIENT HUMIDITY : 85% RH (NO CONDENSATION) ABOVE SEA LEVEL : 1000m OR BELOW ENVIRONMENT : NO CORROSIVE/EXPLOSIVE GAS, NO STEAM OR CONDENSATION, MINIMAL DUST.
COLOR	MUNSELL N7 (GRAY)
TERMINAL BOX	NO. OF LEAD WIRES : MOTOR = 6 **, BRAKE = 2 SOURCE CONNECTION : LEAD WIRES
SHAFT SWING	≤0.05mm
MATERIAL	FRAME : STEEL PLATE BRACKET : CAST IRON SHAFT : CARBON STEEL STATOR CORE : ELECTRICAL STEEL WIRE : ENAMELLED COPPER MAGNET WIRE ROTOR CORE : ELECTRICAL STEEL CONDUCTOR : ALUMINIUM TERMINAL BOX : CAST IRON PAINTING : POLYURETHANE RESIN
BRAKE	TYPE : ESB-250S (DC) RATED BRAKING TORQUE : 450 N.m POWER SUPPLY UNIT : PROVIDED BY CUSTOMER. (REFER TO OUTLINE DRAWING.)
PRODUCTION COUNTRY	JAPAN

\*Value indicates representative value, not guaranteed value.

\*\*Motor have total 12 lead wires, but only 6 lead wires are used for source connection.

Specifications subject to change without notice.

<b>SPECIFICATION SHEET NO.</b>				
SS-M-4700-A				

# TYPE SF-PRB SUPER-LINE THREE PHASE INDUCTION MOTOR

OUT LINE  
DIMENSION IN mm

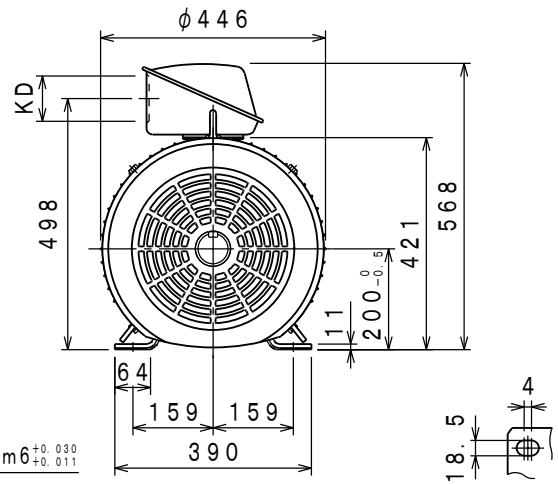
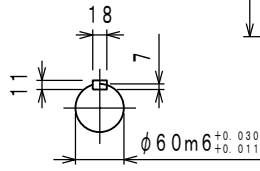
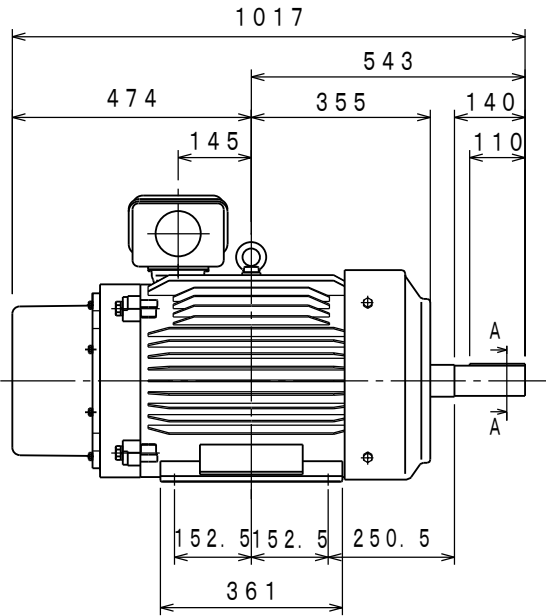
## INDOOR USE TYPE

TOTALLY ENCLOSED FAN COOLED  
PROTECTION DEGREE: IP44, COOLING METHOD: IC411  
BRAKE (PROTECTION DEGREE: IP44)  
WITH TYPE ESB-250S ELECTRO MAGNETIC BRAKE  
VOLT: D. C 90V, BRAKING TORQUE: 450N·m FRAME NO. 200LD

CUSTOMER \_\_\_\_\_  
USER \_\_\_\_\_  
FOR \_\_\_\_\_  
CUST'S ORDER NO. \_\_\_\_\_  
QUANTITY \_\_\_\_\_ UNIT (S) \_\_\_\_\_  
MFG ORDER NO. \_\_\_\_\_

YOUR ORDER	kW·POLES	VOLT	HERTZ	MASS kg/UNIT	STYLE NO.
	37 kW 4P	380V	50Hz	345	

IE Code-Rated Eff	
37 kW 4P	IE3-94.9%



SECTION AA

PLANE VIEW OF FOOT

	RATING	TH. CLASS	AMB. TEMP	BEARINGS		NO. OF TERMINALS		VIEWED FROM DRIVE END		COLOUR	KD	BRAKING TORQUE
				LOAD SIDE	OPPOSITE SIDE	MOTOR	BRAKE	DIRECT. OF TERMINAL BOX	ROTATION			
	S1	155 (F)	40° C	6313ZZ	6312ZZ	6	2	A (LEFT)	CCW	MUNSELL N7	$\phi 90$	ABOVE 150%

1. THE POWER-SUPPLY UNIT FOR THE BRAKE IS NOT ATTACHED. PLEASE ARRANGE BY YOU, AND INSTALL IT IN THE CONTROL BOARD.
2. THE TYPE OF POWER-SUPPLY UNIT IS GIVEN BELOW. THE BRAKE CAN BE USED WITH DC90V. THE OTHER TYPES OF POWER SUPPLY UNIT CAN HEAT THE BRAKE COIL AND SHORTEN ITS LIFE SPAN.

TYPE: HD-120M (OSAKI ELECTRIC CLUTCH BRAKE Co., Ltd.)

INPUT: SINGLE PHASE AC200V/220V

OUTPUT (BRAKE INPUT): DC180V WHEN RELEASING THE BRAKE

DC 45V WHEN KEEPING THE RELEASING OF THE BRAKE } INPUT AC200V LOAD RUNNING

3. PLEASE GIVE SINGLE PHASE AC200V FOR THE BRAKE POWER-SUPPLY UNIT.

	DRAWN	APPROVED
	SCALE NTS	
	DATE Mar. 14. '19	

CAD (2D)

MITSUBISHI ELECTRIC CORP., JAPAN  
NAGOYA WORKS

CHANGE			

図面番号  
DWG. NO. BD39545-\*