



TYPE
SMW110

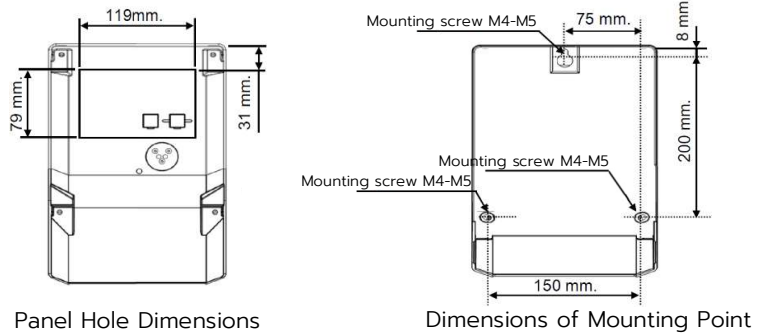
Technical Data
Electronic Meter SMW110 Advance Model

Model Code	SMW110-C47E
Standard	TIS 2544-2555, IEC 62052-11, IEC 62053-22
Display	LCD Display
Energy (kWh)	5 integer + 1 decimal
Display Item	Normal mode (automatic scrolling) : kWh (import), Date, Time
	Alternate mode (manual scrolling) : TOU kWh (import), TOU kWh (import) last billing, kW, Volt, Amp, PF, Phase angle, CT Ratio, Wiring Status, Date, Time, RS-485 Protocol, Modbus baud rate, Modbus address, ID code, Display test
	Backup mode (power failure) : kWh (import), CT Ratio, RS-485 Protocol
OPERATING CONDITION	
Power System	3-Phase 4-Wire
Reference Voltage	3x220/380-230/400 V
Operating Voltage	165/285-264/457 V
Rated Current	5(10) A (CT operated)
Reference Frequency	50 Hz
Temperature/Humidity	0-70 °C / 0-95 %RH (non-condensing)
COMMUNICATION / SOFTWARE	
Communications Port	RS-485 port and Optical port (physical IEC 62056-21)
Protocol	<ul style="list-style-type: none"> · Modbus RTU (default) · DLMS/COSEM (for using with UX EvaluationPro)
Accessories (Optional)	<ul style="list-style-type: none"> · Optical probe (physical IEC 62056-21) · RS-485 to ethernet converter, RS-485 Surge protector, Terminator 150
Baud Rate (bps)	<ul style="list-style-type: none"> · 19200 bps (for DLMS/COSEM) · 4800 (default), 9600, 19200 bps (for Modbus RTU)
Support Software	<ul style="list-style-type: none"> · UX EvaluationPro (Windows or later) · Modbus Meter Setting (Windows 10 or later)
ELECTRICAL CHARACTERISTICS	
Accuracy	Class 0.5 S (Active Energy)
Meter Constant	5000 imp/kWh
Power Consumption	
Voltage Circuit	< 2 W / 10 VA
Current Circuit	< 1 VA
Starting Current	5 mA (at reference voltage)
Over Current	12 A (continue for 30 minutes)
Surge Immunity	6 kV (higher than Standard 50%)
Impulse Voltage	8 kV (higher than Standard 30%)

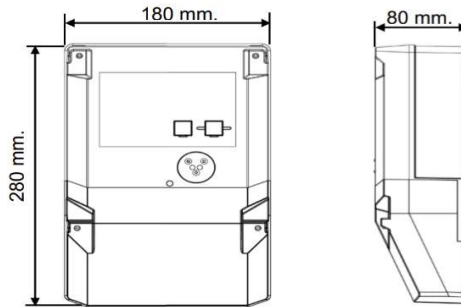
MECHANICAL CONSTRUCTION

Protective Class	Class II (double insulation)
Enclosure Protection	IP54
Applicable Conductors	2.5-10 mm ²
Mounting	3 points
Battery	Lithium (long lifetime and replaceable)
Weight	1.32 kg

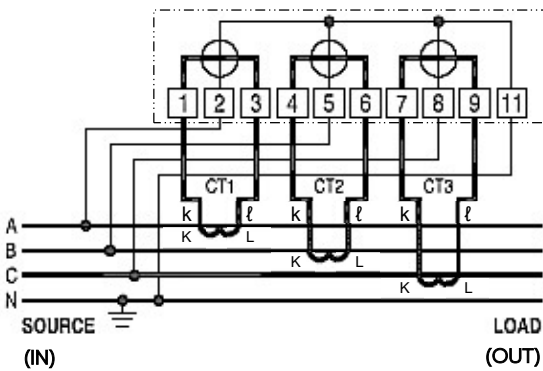
Panel Hole Dimensions (mm) and Dimensions of Mounting Point (mm)



Dimensions (mm)



Connection Diagram



Specifications are subject to change without notice.