



TYPE

SMW110W4

Technical Data

Smart Meter CT Operated Type, 3 Phase 4 Wire

Model Code	SMW110W4-N141C600
Standard	TIS 2544-2555, IEC 62052-11, IEC 62053-22
Display	LCD Display
Energy (kWh)	8 integer (programmable digits and decimal)
Harmonics Measuring	THDv, THDi, Harmonics (up to 16 th order)
Display Item	Normal mode (automatic scrolling) : kWh (import), kWh (export), Date of Display, Time of Display
	Alternate mode (manual scrolling) : kW, kvarh, Volt, Amp, TOU kWh, TOU Demand, TOU kWh (last billing), TOU Demand (last billing), CT Ratio, Wiring Status, RS-485 Protocol, Modbus baud rate, Modbus parity, Modbus address, ID code
	Backup mode (power failure) : kWh (import), kWh (export), CT Ratio
OPERATING CONDITION	
Power System	3-Phase 4-Wire
Reference Voltage	3x230/400 V
Operating Voltage	165/285-264/457 V
Rated Current	5(10) A (CT operated)
Reference Frequency	50 Hz
Temperature/Humidity	0-70 °C / 0-95 %RH (non-condensing)
COMMUNICATION / SOFTWARE	
Communications Port	<ul style="list-style-type: none"> · Optical port (Physical IEC 62056-21) · RS-232 port with 12V 0.3A DC power for Gateway or 3G/4G modem · RS-485 port
Protocol	<ul style="list-style-type: none"> · DLMS/COSEM (HDLC Profile) for RS-232 and RS-485 (default) · Modbus RTU for RS-485
Accessories (Optional)	<ul style="list-style-type: none"> · 3G/4G Modem (RS-232) · RS-485 to Ethernet converter, VPN Routers
Baud Rate (bps)	<ul style="list-style-type: none"> · 19200 bps (for DLMS/COSEM) · 4800 (default), 9600, 19200 bps (for Modbus RTU)
Support Software	<ul style="list-style-type: none"> · UX EvaluationPro (Windows 10 or later) · Modbus Meter Setting (Windows 10 or later)

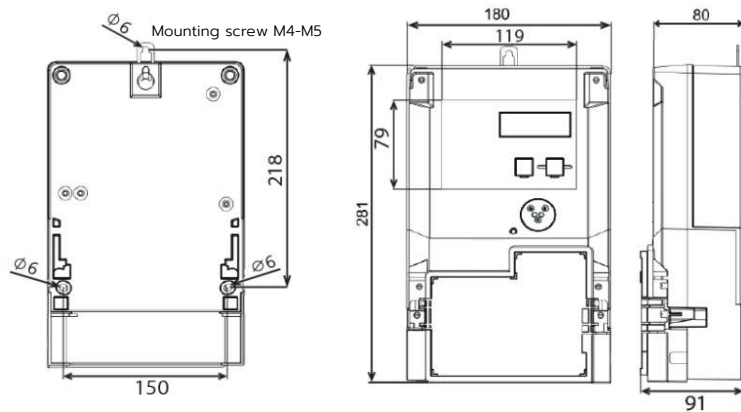
ELECTRICAL CHARACTERISTICS

Accuracy	Class 0.5 S (Active Energy)
Meter Constant	5000 imp/kWh
Power Consumption	
Voltage Circuit	< 2 W / 10 VA
Current Circuit	< 1 VA
Starting Current	5 mA (at reference voltage)
Over Current	12 A (continue for 30 minutes)
Surge Immunity	6 kV (higher than IEC Standard 50%)
Impulse Voltage	8 kV (higher than Standard 30%)

MECHANICAL CONSTRUCTION

Protective Class	Class II (double insulation)
Enclosure Protection	IP54 Weather proof
Applicable Conductors	2.5-10 mm ²
Mounting	3 points
Battery	Lithium (long lifetime and replaceable)
Weight	148 kg

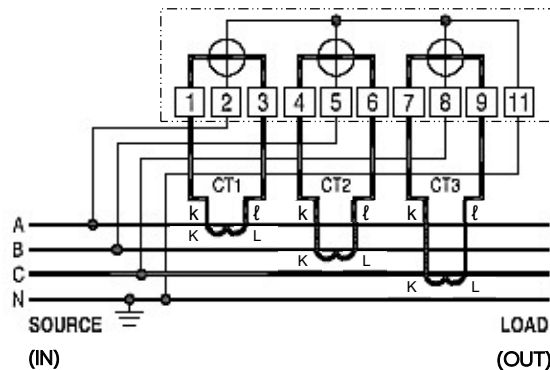
Dimensions of Mounting Point (mm) and Dimensions (mm)



Dimensions of Mounting Point

Dimensions

Connection Diagram



Specifications are subject to change without notice.