

UX EvaluationPro User Manual

Standard Package

Please read this user manual before use UX EvaluationPro software.

UX EvaluationPro User Manual

Standard Package

MITSUBISHI ELECTRIC AUTOMATION (THAILAND) CO., LTD.

Bang-Chan Industrial Estate, 111 Soi Serithai 54 T. Kannayao, A. Kannayao, Bangkok 10230, Thailand

Tel: (66) 2517-1326, (66) 2919-9873 Fax: (66) 2517-1328

Document Number

MSD-T0060B

Table of Content

Topic	Page
Table of Content	3
Table of Illustration	5
1 Introduction	1
1.1 <i>Software Features</i>	<i>1</i>
1.2 <i>Support Meter</i>	<i>1</i>
1.3 <i>Startup Diagram</i>	<i>2</i>
1.4 <i>Software Components</i>	<i>4</i>
1.5 <i>System Requirement</i>	<i>5</i>
2 Installation	6
2.1 <i>Prerequisite Software Installation</i>	<i>6</i>
2.1.1 <i>Microsoft .NET Framework 4.5 Installation</i>	<i>6</i>
2.1.2 <i>Microsoft SQL Server Compact Edition 4.0 Installation</i>	<i>8</i>
2.2 <i>UX EvaluationPro Installation</i>	<i>10</i>
2.3 <i>Software Uninstall</i>	<i>12</i>
3 Getting Started with UX EvaluationPro	14
3.1 <i>Start Software</i>	<i>14</i>
3.2 <i>Login</i>	<i>15</i>
3.3 <i>Change Password</i>	<i>18</i>
3.4 <i>Communication Selection</i>	<i>20</i>
3.5 <i>Communication Log</i>	<i>24</i>
4 Meter Management	27
4.1 <i>Meter Reading</i>	<i>28</i>
4.1.1 <i>Meter Reading Tab Menu</i>	<i>28</i>
4.1.2 <i>Browse File</i>	<i>35</i>
4.1.3 <i>Read Data</i>	<i>37</i>

4.1.4	<i>Export Data</i>	41
4.2	<i>Meter Option</i>	45
4.2.1	<i>Change Meter Date and Time</i>	45
4.2.2	<i>Auto Synchronize Meter Time</i>	48
4.3	<i>Meter Setting</i>	49
4.3.1	<i>Meter Setting Tab Menu</i>	49
4.3.2	<i>Browse File</i>	55
4.3.3	<i>Read Data</i>	56
4.3.4	<i>Save File</i>	57
4.3.5	<i>Program (Setting Data to Meter)</i>	58
4.3.6	<i>Export Data</i>	61
5	Multiple Meter Data	63
5.1	<i>Multiple Meter Reading</i>	64
5.1.1	<i>AMR Reading</i>	66
5.1.2	<i>TOU Report</i>	67
5.2	<i>Customer Info</i>	71
5.2.1	<i>Company Info</i>	72
5.3	<i>TOU Billing (Auto Billing)</i>	73
5.4	<i>Load Profile Compare</i>	78
6	Broadcast Change RS485 Protocol	80
7	About Software	82
8	User Manual	83
9.1	AMR Service	84
9.2	SyncTime	85
10	Exit Software	86
11	Troubleshooting	87

Table of Illustration

Picture	Page
Picture 1: Startup diagram (SMW110).....	2
Picture 2: Startup diagram (SMW110) Cont.....	3
Picture 3: Software components.....	4
Picture 4: .NET Framework 4.5 installation file.....	6
Picture 5: Install .NET Framework.....	6
Picture 6: .NET Framework installation progress.....	7
Picture 7: .NET Framework installation complete.....	7
Picture 8: SQL CE 4.0 installation file.....	8
Picture 9: SQL CE 4.0 welcome screen.....	8
Picture 10: SQL CE 4.0 license agreement.....	8
Picture 11: SQL CE 4.0 confirm installation.....	9
Picture 12: SQL CE 4.0 installation complete.....	9
Picture 13: Installation file.....	10
Picture 14: Welcome screen of installation.....	10
Picture 15: Select install location.....	10
Picture 16: Ready to install.....	11
Picture 17: Finished installation.....	11
Picture 18: UX EvaluationPro icon.....	11
Picture 19: Control Panel button.....	12
Picture 20: Programs and features.....	12
Picture 21: Uninstall UX EvaluationPro.....	12
Picture 22: Confirm uninstall.....	13
Picture 23: Finished uninstall.....	13
Picture 24: UX EvaluationPro start software.....	14
Picture 25: UX EvaluationPro shortcut.....	14
Picture 26: Splash screen.....	14
Picture 27: Login screen.....	15
Picture 28: Input user name and password.....	15
Picture 29: Warning invalid username or password.....	16
Picture 30: Confirm exit software.....	16
Picture 31: Change password.....	18
Picture 32: Change password screen.....	18
Picture 33: Input change password information.....	18

Picture 34: Change password complete.....	19
Picture 35: Select communication method.....	20
Picture 36: Select and Initialize COM port.....	20
Picture 37: Open device manager.....	21
Picture 38: Device manager screen.....	21
Picture 39: Select RS485 ComPort method to connect a meter.....	22
Picture 40: Set ComPort, Baud Rate, and Meter Serial.....	22
Picture 41: Connected to a meter with RS485 ComPort.....	22
Picture 42: Select RS485 TCP/IP method to connect a meter.....	23
Picture 43: Set an IP, Port, and Meter Serial.....	23
Picture 44: Connected to a meter with RS485 TCP/IP.....	23
Picture 45: Communication log.....	24
Picture 46: UX EvaluationPro main screen for Meter Management.....	27
Picture 47: Meter Management menu.....	27
Picture 48: Meter Reading menu tabs.....	28
Picture 49: Meter Data tab.....	28
Picture 50: Load Profile tab.....	29
Picture 51: PQM Data tab (Phasor).....	32
Picture 52: PQM Data tab (Harmonic).....	33
Picture 53: Previous Data Tab.....	34
Picture 54: Browse reading template button.....	35
Picture 55: Select reading template.....	35
Picture 56: After browse reading template.....	36
Picture 57: Read load profile condition.....	37
Picture 58: Read button.....	37
Picture 59: Software is reading data.....	38
Picture 60: Reading data finished.....	38
Picture 61: Export reading data button (CSV).....	41
Picture 62: Save reading report file (CSV).....	41
Picture 63: Export reading report finished (CSV).....	41
Picture 64: Export reading data button (XLSX).....	42
Picture 65: Save reading report file (XLSX).....	42
Picture 66: Export reading report finished (XLSX).....	42
Picture 67: Export load profile report.....	43
Picture 68: Save load profile report file.....	44
Picture 69: Meter Option menu tabs.....	45
Picture 70: Change meter data and time option.....	45

Picture 71: Read data time	46
Picture 72: Show date time	46
Picture 73: Synchronize data time with PC	46
Picture 74: Manual set date time	46
Picture 75: Confirm set date time	46
Picture 76: Set date time complete	47
Picture 77: Auto Synchronize Meter Time option	48
Picture 78: Read current meter constant.....	48
Picture 79: Auto synchronize meter time setting complete	48
Picture 80: Meter Setting menu tabs.....	49
Picture 81: Calendar tab.....	49
Picture 82: Batch Setting TOU Calendar screen.....	50
Picture 83: Add meter complete	50
Picture 84: Checkbox selection	50
Picture 85:Program meter complete	51
Picture 86: Self-Reading tab	52
Picture 87: Display Setting tab	53
Picture 88: Display Setting screen.....	53
Picture 89: Meter Display	54
Picture 90: Browse setting template file button	55
Picture 91: Select setting template file	55
Picture 92: After browse setting template	55
Picture 93: Read setting data button	56
Picture 94: Reading progress bar	56
Picture 95: Show setting data after read	56
Picture 96: Save setting template button	57
Picture 97: Save setting template.....	57
Picture 98: Scrolling time setting	58
Picture 99: Display setting.....	58
Picture 100: Display mode setting.....	58
Picture 101: Add display item	59
Picture 102: Display setting main screen for user login as “advance”	59
Picture 103: Display setting detail screen for user login as “advance”	60
Picture 104: Program button.....	60
Picture 105: Programming progress bar.....	60
Picture 106: Program data to meter finished	60
Picture 107: Export setting report button (CSV).....	61

Picture 108: Save setting report (CSV)	61
Picture 109: Export reading data button (XLSX).....	61
Picture 110: Save reading report file (XLSX).....	62
Picture 111: UX EvaluationPro main screen for Multiple Meter Data.....	63
Picture 112: UX EvaluationPro menu	63
Picture 113: Multiple Meter Reading screen.....	64
Picture 114: Add meter complete	64
Picture 115: Checkbox selection	64
Picture 116: Read meter complete.....	65
Picture 117: Read Meter via Optical Probe group	65
Picture 118: AMR Status show 'Running'	66
Picture 119: Show TOU Report screen and Load Profile tab screen.....	67
Picture 120: Show TOU tab screen	68
Picture 121: Show TOU Calendar screen.....	69
Picture 122: Customer Info screen	71
Picture 123: Save customer info complete	71
Picture 124: Company Info screen	72
Picture 125: TOU Billing (Auto Billing) screen	73
Picture 126: Save customer info complete	73
Picture 127: Checkbox selection	73
Picture 128: Issue billing confirmation message box.....	74
Picture 129: Issue TOU Billing complete	74
Picture 130: Save customer info complete	74
Picture 131: Export Meter Date for TOU Billing	76
Picture 132: Export Meter Date for TOU Billing report file	76
Picture 133: Meter Date for TOU Billing report file	76
Picture 134: Load Previous from issue billing period history	77
Picture 135: Load Previous value from issue billing period confirmation message box	77
Picture 137: Don't have data on Load profile data	78
Picture 138: Change RS485 Protocol button.....	80
Picture 139: Broadcast Change RS485 protocol	80
Picture 140: Broadcast Change RS485 protocol successfully	81
Picture 141: About button.....	82
Picture 142: About screen.....	82
Picture 143: User Manual button.....	83
Picture 144: Show user manual	83
Picture 145: Show AMR Service on Task Manager menu	84

Picture 146: AMR Status show 'Other'	84
Picture 147: Show Start AMR button	84
Picture 148: Show Stop AMR button	84
Picture 149: Show Start SyncTime button	85
Picture 150: Show Stop SyncTime button	85
Picture 151: Close button	86
Picture 152: Confirm to exit software	86

1 Introduction

1.1 Software Features

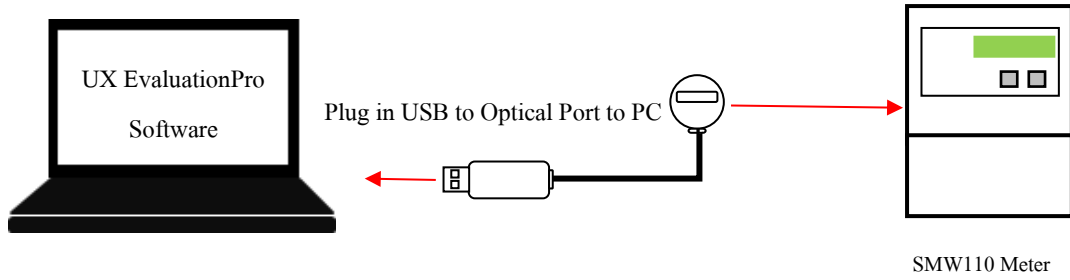
- Read billing data from meter such as kW-hour, kW demand, kvar-hour, kvar demand.
- Read data from meter such as load profile data, instantaneous data, and previous data.
- Issue TOU Billing for each billing type e.g. TOU Billing 2 rate/3 rate, TOU Demand Billing 2 rate/3 rate, Flat Rate
- Change meter date and time
- Set data to meter such as calendar, self-reading, display setting
- Export report file (*.csv, *.xlsx)
- Save template file (*.prg) for set data to meter.
- Save meter billing data to database.

1.2 Support Meter

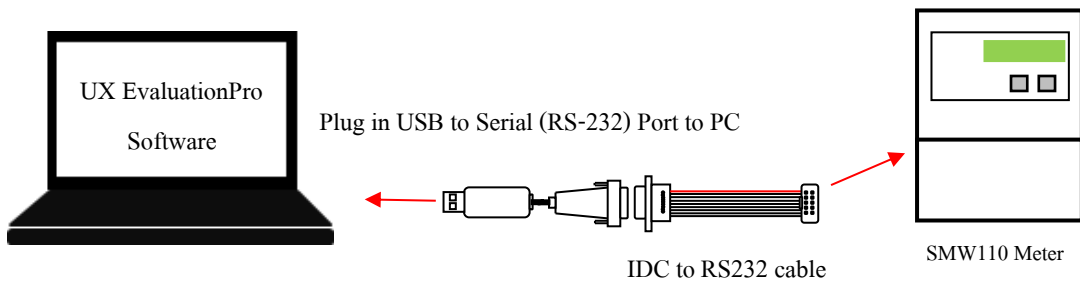
No.	Item	Meter Type	Meter Model	Category
1.	3P4W 2.5(10)A	SMW110	SMW110W4-N191C400	Smart
2.	3P4W 5(10)A	SMW110	SMW110W4-N141C400	Smart
3.	3P4W 5(10)A	SMW110-C47E	SMW110W4-N141C600	Advance
4.	3P4W 5(100)A	SMW110-C07E	SMW110W4-N131C600	Advance
5.	3P4W 5(10)A	SMW110-C47R	SMW110W4-N141C600	Smart

1.3 Startup Diagram

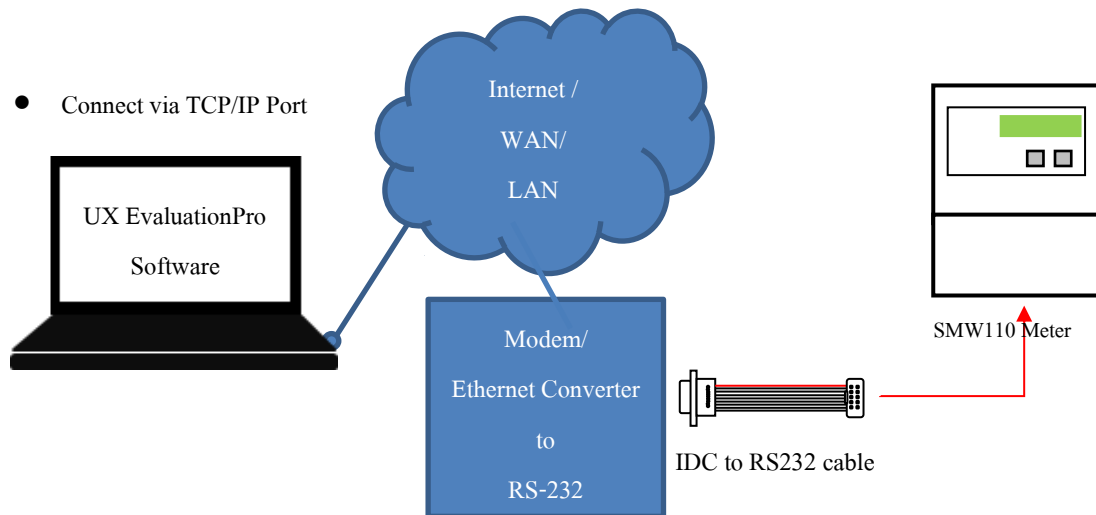
- Connect via Optical Port



- Connect via RS232 Port

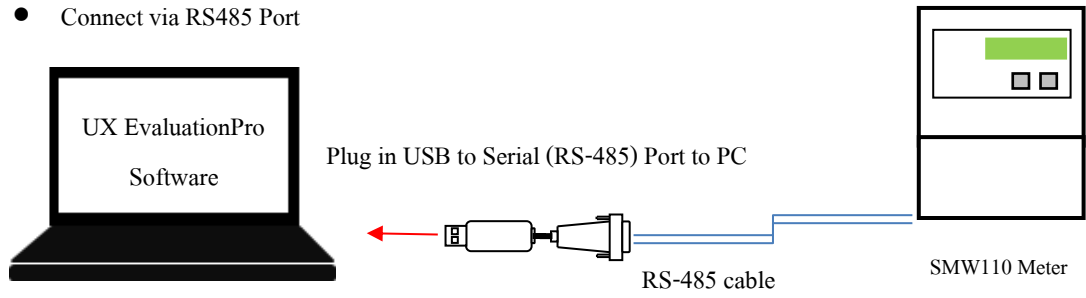


- Connect via TCP/IP Port

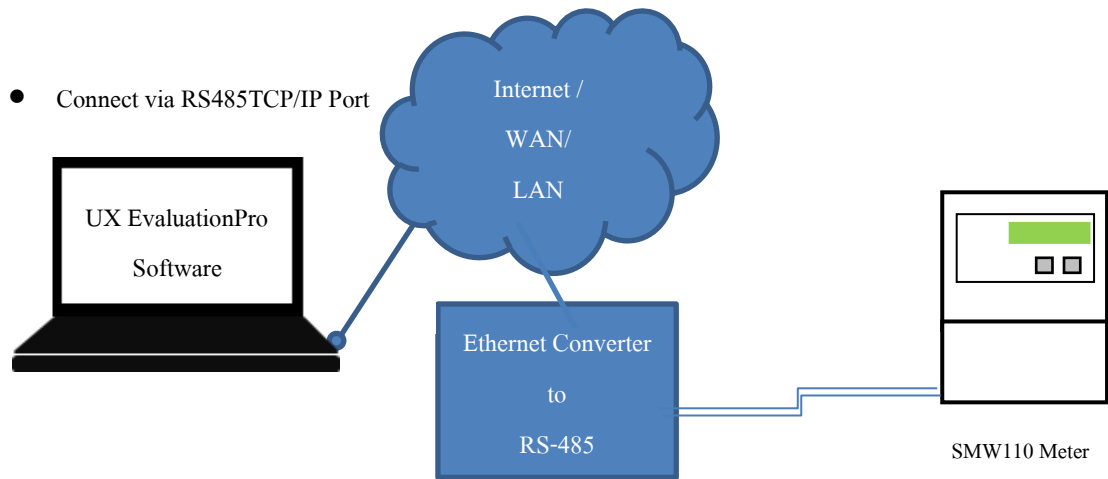


Picture 1: Startup diagram (SMW110)

- Connect via RS485 Port

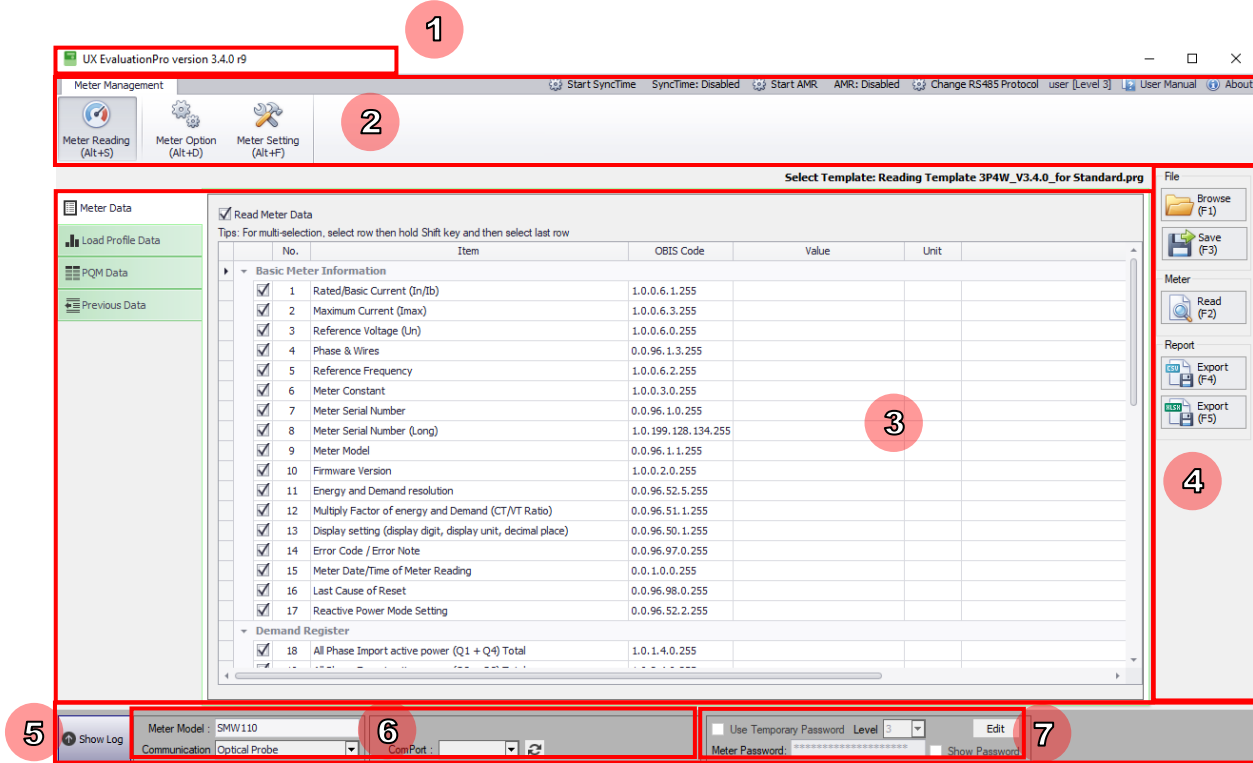


- Connect via RS485TCP/IP Port



Picture 2: Startup diagram (SMW110) Cont.

1.4 Software Components



Picture 3: Software components

- 1) **Software name:** Show software name.
- 2) **Menu bar:** Show all menus of UX EvaluationPro.
- 3) **Data area:** Show meter data such as reading data, setting data.
- 4) **Button area:** Show button of each menu.
- 5) **Log console:** Show communication information between software and meter.
- 6) **Group box for mode selection:** Show selection of communication mode that able to connect to meter.
- 7) **Temporary password:** Show temporary password detail to connect to meter.

Note: Date Time format in software is “dd/MM/yyyy HH:mm:ss” example 08/04/2021 19:30:45

Format	Description
dd	Represent to day of month.
MM	Represent to month.
yyyy	Represent to year. (Christian era)
HH	Represent to hour. (24-hour format)
mm	Represent to minute.
ss	Represent to second.

1.5 System Requirement

UX Evaluation Pro software has following minimum requirement

Content	Minimum Requirement
Operating System (OS):	Windows 10 Professional (64 bits)
	Windows 10 Home Single Language (64bits)
	Windows 11 Professional (64 bits)
	Windows 11 Home Single Language (64bits)
Processor (CPU):	Intel or AMD 1 GHz 64-bit processor or more. Don't specify.
Hard Disk:	40 GB hard drive with at least 15 GB of available space.
Memory (RAM):	8 GB or more
Monitor Resolution:	1366 x 768 or more
.Net Framework:	.Net Framework 4.5
Database:	SQL Server Compact Edition 4.0
	MariaDB 10.2
PDF Reader Software:	Adobe Reader 11 or more
Other:	Ethernet Port
	CD-ROM Drive
	USB Optical Probe
	Bluetooth adapter (Optional)

2 Installation

2.1 Prerequisite Software Installation

UX EvaluationPro Software requires prerequisite program as follow

2.1.1 Microsoft .NET Framework 4.5

2.1.2 Microsoft SQL Server Compact Edition 4.0

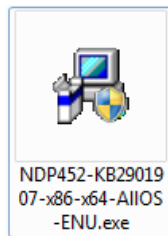
2.1.3 MariaDB 10.2*

*Note: 1.) MariaDB will install silently during UX EvaluationPro installation.

2.) In case of failure to install MariaDB. Please contact Meter Technical Support (Tel. 0-2540-6992 or Line ID @meterservice.meath, Mon – Fri 8:00 a.m. to 5:00 p.m.).

2.1.1 Microsoft .NET Framework 4.5 Installation

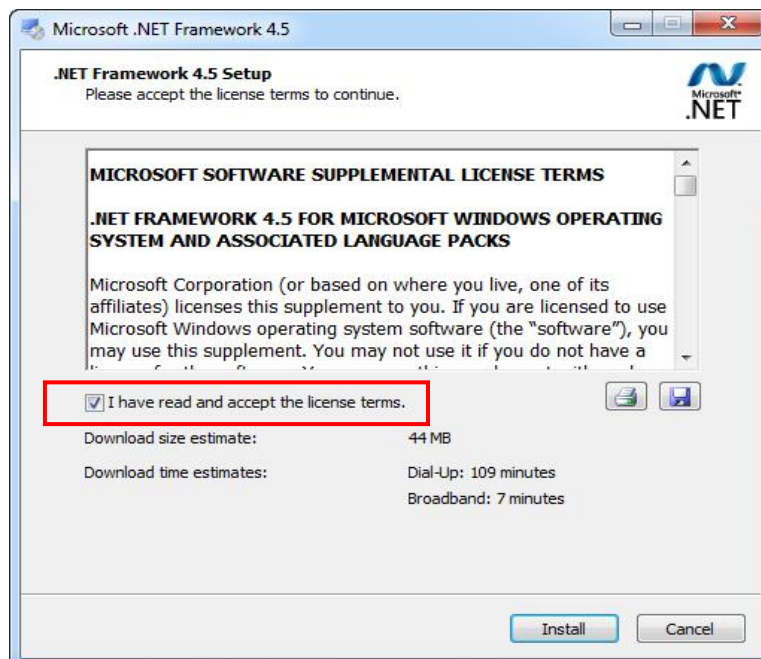
1) Double click .NET Framework 4.5 installation file.



Picture 4: .NET Framework 4.5 installation file

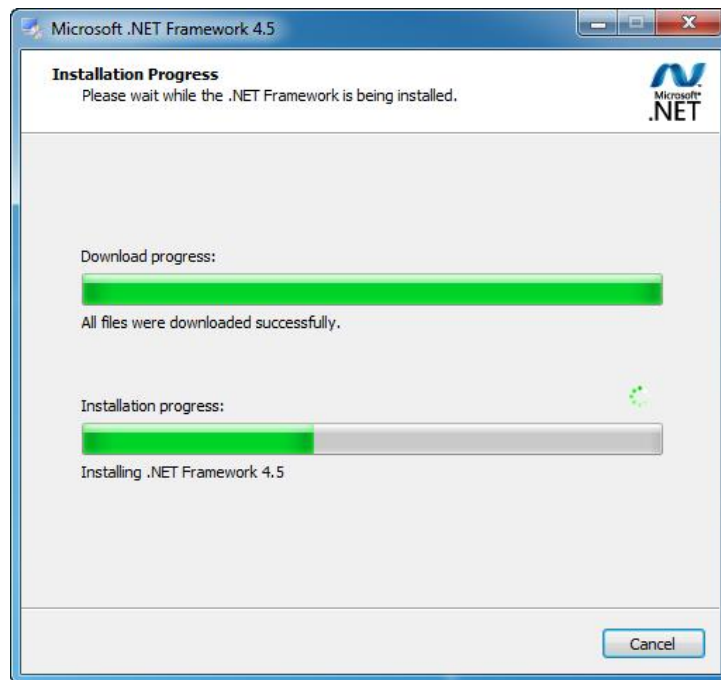
2) Select “I have read and accept the license terms.”

3) Click **Install** button.



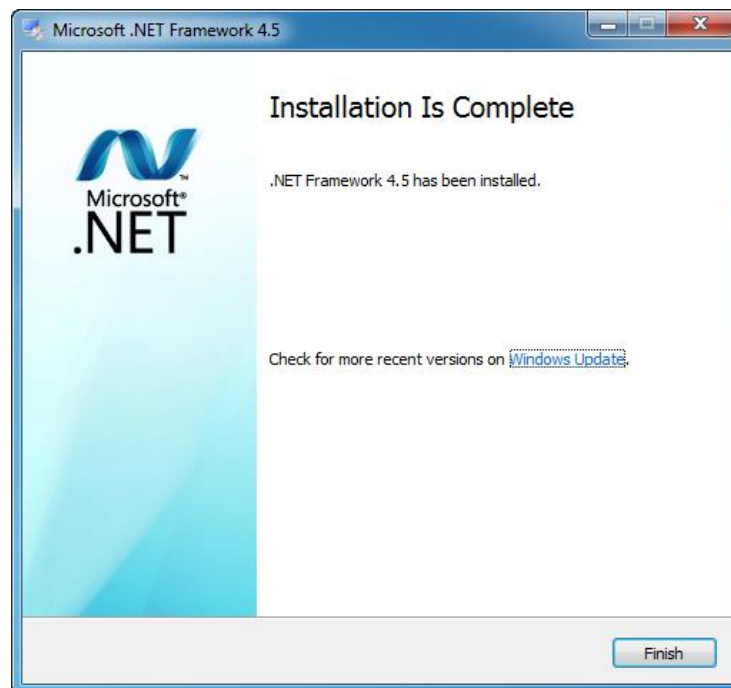
Picture 5: Install .NET Framework

4) Wait until installation finish.



Picture 6: .NET Framework installation progress

5) Click **Finish** button.

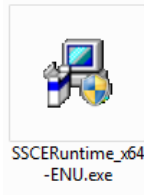


Picture 7: .NET Framework installation complete

2.1.2 Microsoft SQL Server Compact Edition 4.0 Installation

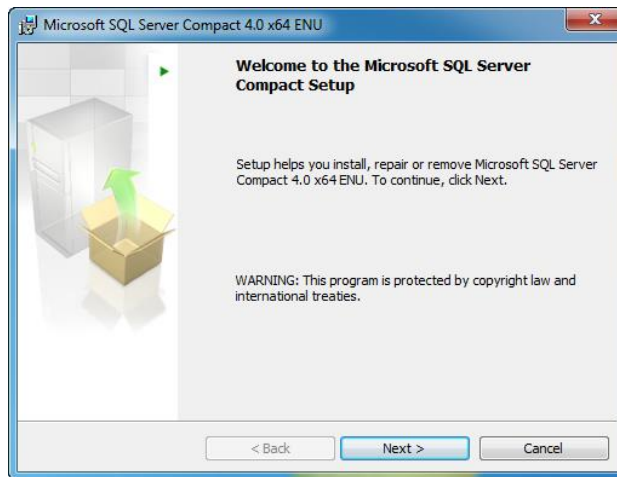
- 1) For window 10 64 bits, Double click SQL CE 4.0 installation file “SSCERuntime_x64-ENU.exe”

Window 10 64 bits



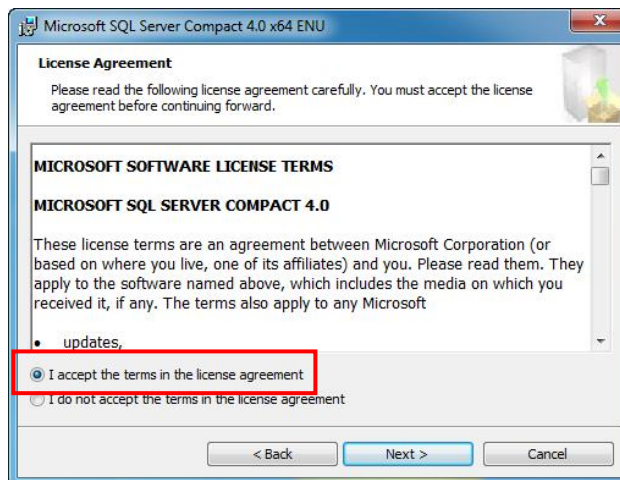
Picture 8: SQL CE 4.0 installation file

- 2) On welcome setup screen, click **Next** button.



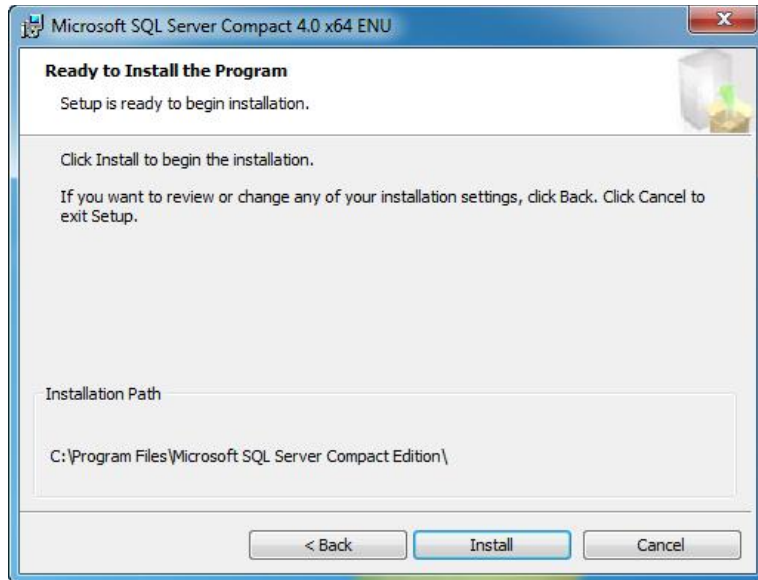
Picture 9: SQL CE 4.0 welcome screen

- 3) Select “I accept the terms in the license agreement”.
- 4) Click **Next** button.



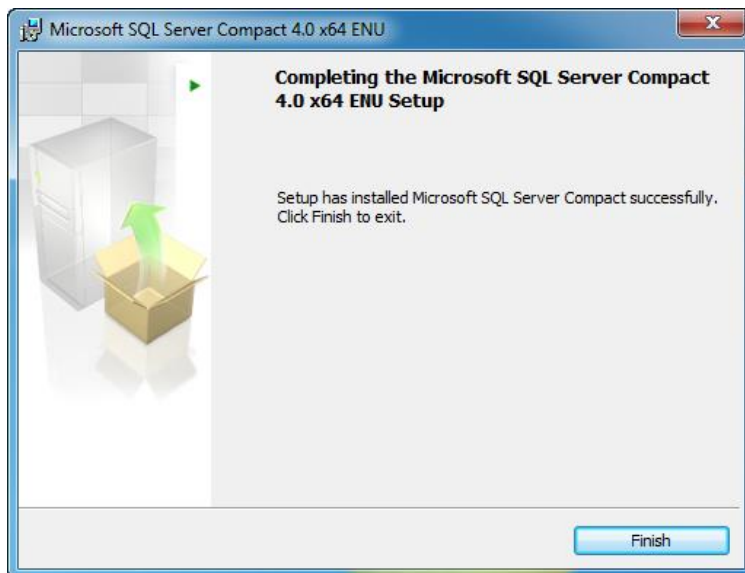
Picture 10: SQL CE 4.0 license agreement

5) Click **Install** button.



Picture 11: SQL CE 4.0 confirm installation

6) Wait until finish installation, click **Finish** button.



Picture 12: SQL CE 4.0 installation complete

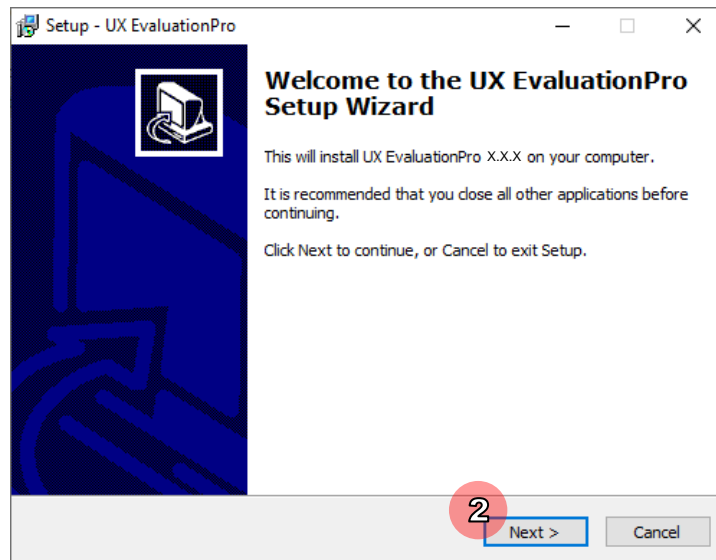
2.2 UX EvaluationPro Installation

- 1) Double click installation file.



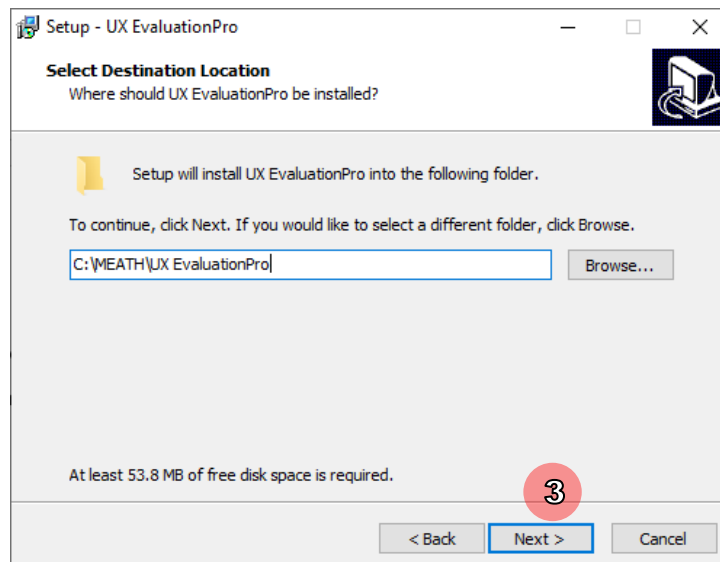
Picture 13: Installation file

- 2) In welcome screen click **Next** button.



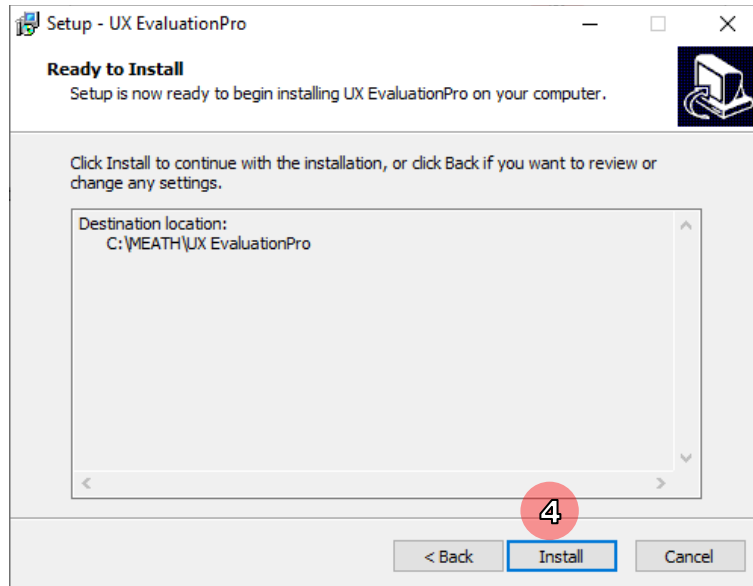
Picture 14: Welcome screen of installation

- 3) Select installation path and click **Next** button, for installation at default folder “C:\MEATH\UX EvaluationPro”, to install a different folder, enter it or click Browse button.



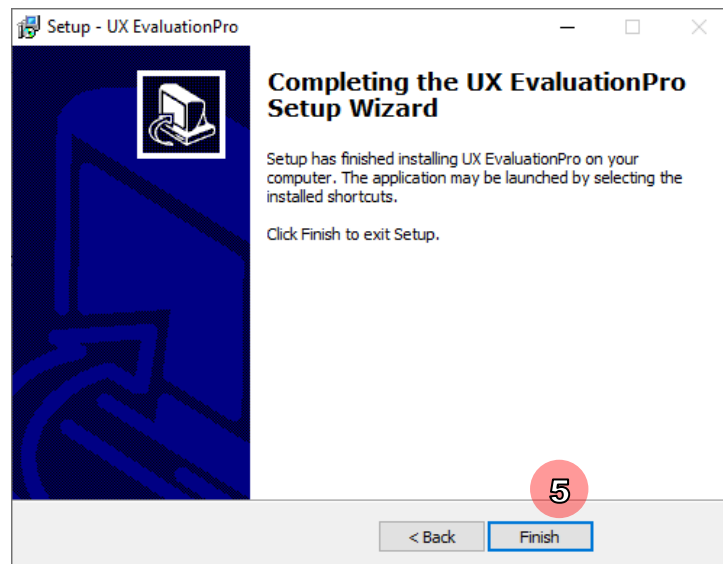
Picture 15: Select install location

4) Click **Install** button.



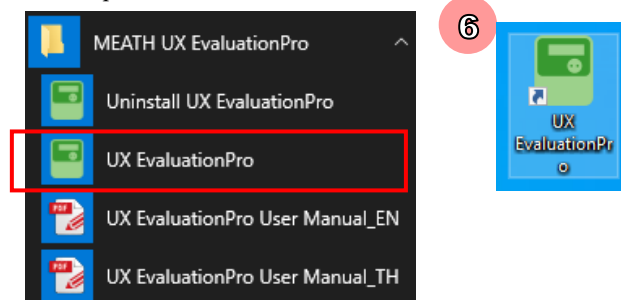
Picture 16: Ready to install

5) Click **Finish** button.



Picture 17: Finished installation

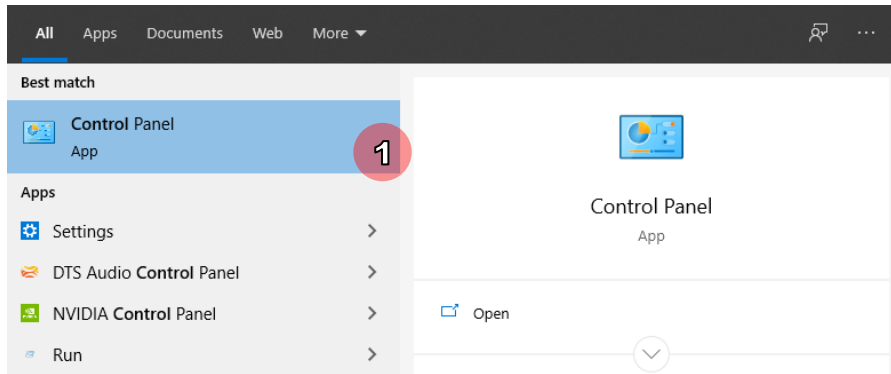
6) UX EvaluationPro icon on start menu and desktop will be created.



Picture 18: UX EvaluationPro icon

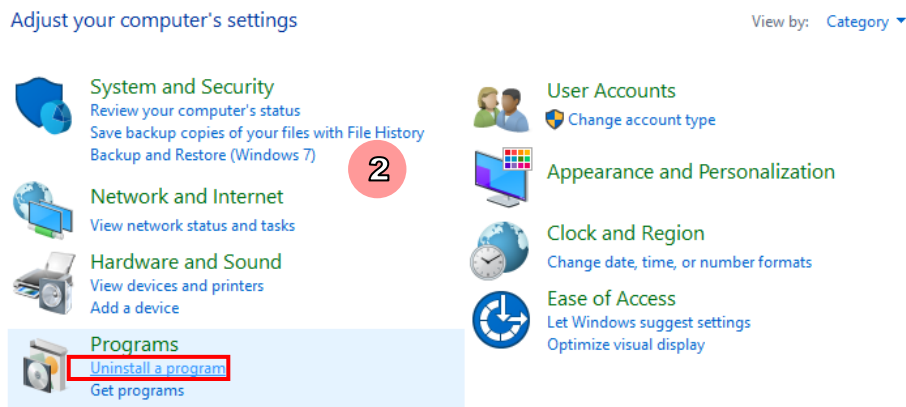
2.3 Software Uninstall

1) Start Control Panel



Picture 19: Control Panel button

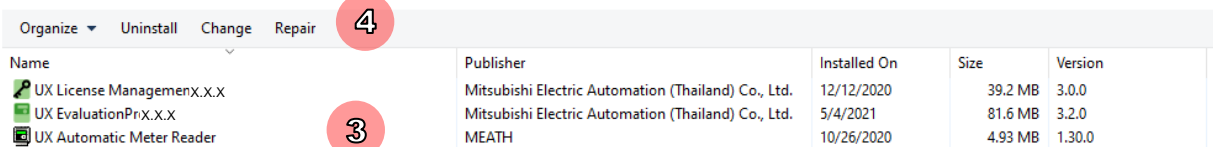
2) Click Uninstall a program



Picture 20: Programs and features

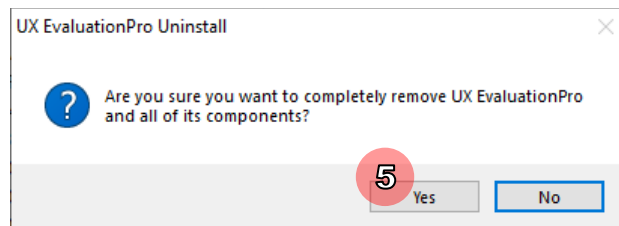
3) Select UX EvaluationPro

4) Click Uninstall button.



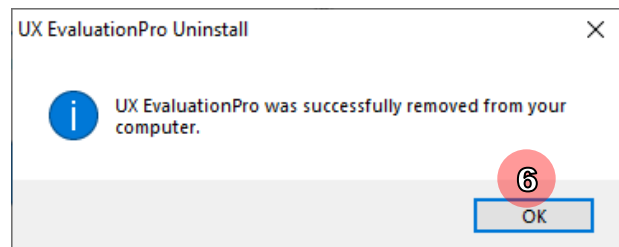
Picture 21: Uninstall UX EvaluationPro

5) Click **Yes** button to confirm.



Picture 22: Confirm uninstall

6) After finish click **OK**

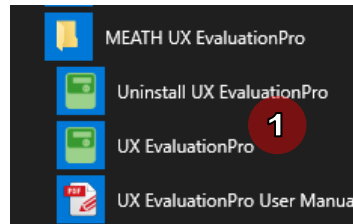


Picture 23: Finished uninstall

3 Getting Started with UX EvaluationPro

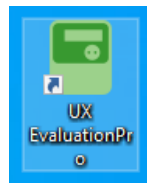
3.1 Start Software

- 1) Click **Start** => **MEATH UX EvaluationPro** => **UX EvaluationPro**



Picture 24: UX EvaluationPro start software

Or double click desktop shortcut.



Picture 25: UX EvaluationPro shortcut

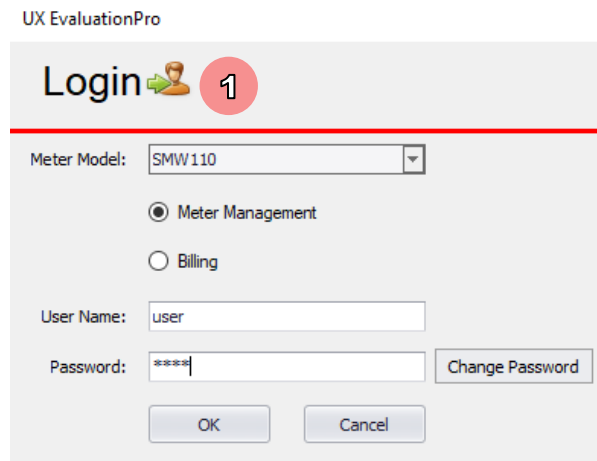
- 2) Software will show splash screen 3 seconds and then show login screen.



Picture 26: Splash screen

3.2 Login

1) After open UX EvaluationPro software login screen will be shown.



Picture 27: Login screen

2) Select meter model.

3) Select User for login:

Select **Meter Management** have 2 users as:

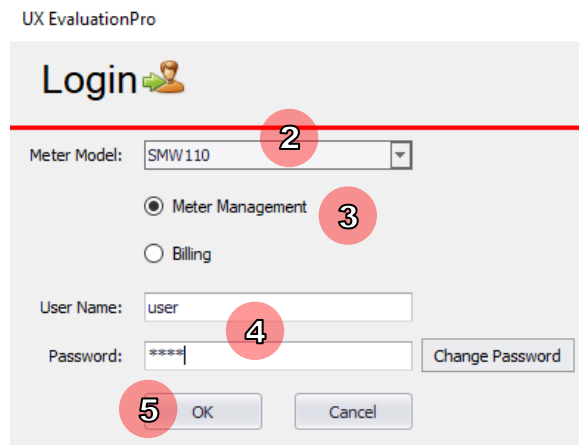
No.	User name	Password	Support Meter	Access Menu
1.	user	user	Smart*	Meter Management
2.	advance	advance	Advance	Meter Management

Select **Billing** have 1 user as:

No.	User name	Password	Support Meter	Access Menu
1.	billing	billing	Advance, Smart*	Multiple Meter Data

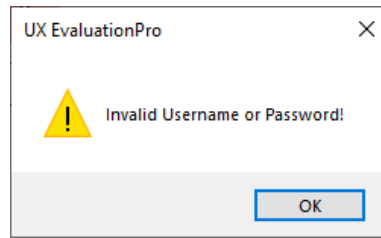
* Note: Smart are both SMW110W4-N141C400 and SMW110W4-N141C600

4) Input user name and password then Click OK button.



Picture 28: Input user name and password

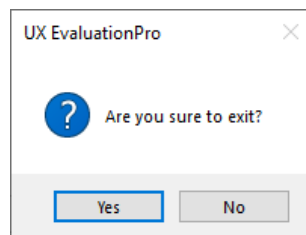
- If user name or password is not correct, software will show message “Invalid Username or Password!”



Picture 29: Warning invalid username or password

If want to close login screen and exit software please follow these steps.

- 1) Click **Cancel** button on login screen.
- 2) Software will show message “Are you sure to exit?”



Picture 30: Confirm exit software

- 3) Click **Yes** button. Software will close screen and exit.

Access Menu for each user name

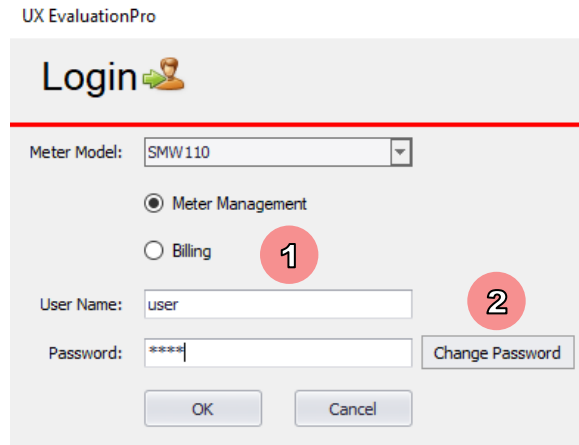
Screen			user name		
Tab Menu	Main Screen	Sub Screen	user	advance	billing
Meter Management	Billing data	Meter Data			
		Meter Reading	Meter Data	O	O
	Meter Option		Load Profile Data	O	O
			PQM Data	O	O
			Previous Data	O	O
			Program Information		
			Change Meter Date and Time	O	O
			Manual Demand Reset		
			Meter Calibration		
			Firmware Upgrade		
			Clear Data		
			Load Connect/Disconnect		
			Meter Constant		
		Auto Synchronize Meter Time	O	O	
		Meter Setting	Calendar	O	O
Self-Reading	O		O		
Display Setting	O		O*		
Multiple Meter Data	Multiple Meter Reading			O	
	Customer Info	Company Info			O
	TOU Billing (Auto Billing)				O
	Load Profile Compare				O
Change RS485 Protocol			O	O	

* The user “advance” can set only Energy and Demand Resolution, and Multiply Factor (CT/VT Ratio)

Note: see more detail in 4 Meter Management

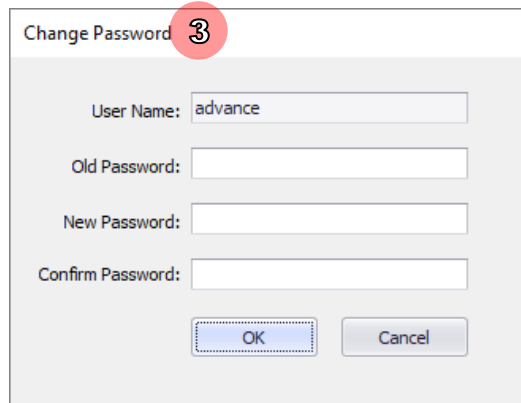
3.3 Change Password

- 1) On login screen input correct user name and password.
- 2) Click **Change password** button.



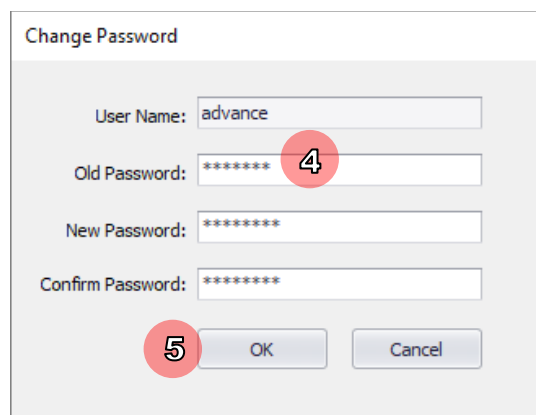
Picture 31: Change password

- 3) Software will show change password screen.



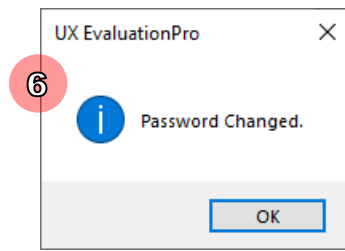
Picture 32: Change password screen

- 4) Input old password, new password and confirm password.
- 5) Click **OK** button.



Picture 33: Input change password information

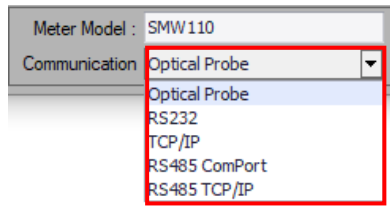
6) If change password complete software will show message “Password Changed.”



Picture 34: Change password complete

3.4 Communication Selection

To communicate with meter for reading or setting data to meter, we have to select a communication method

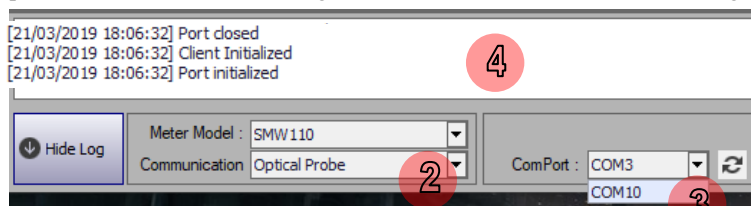


Picture 35: Select communication method


- **Optical Probe and RS232**

To check COM port, see **How to Check COM Port**

- 1) Connect USB optical probe/RS232 with computer
- 2) Open UX EvaluationPro software and select communication method: optical probe or RS232
- 3) Select COM port of USB
- 4) If select correct COM port, software will show message “Port initialized” on communication log

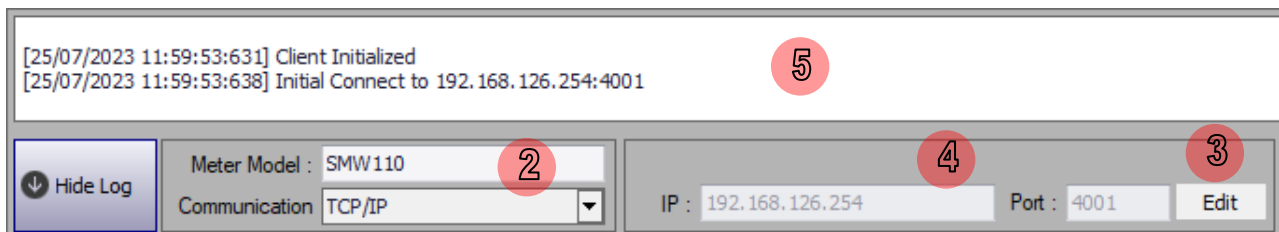


Picture 36: Select and Initialize COM port

User can click  (Refresh) button for refresh comport

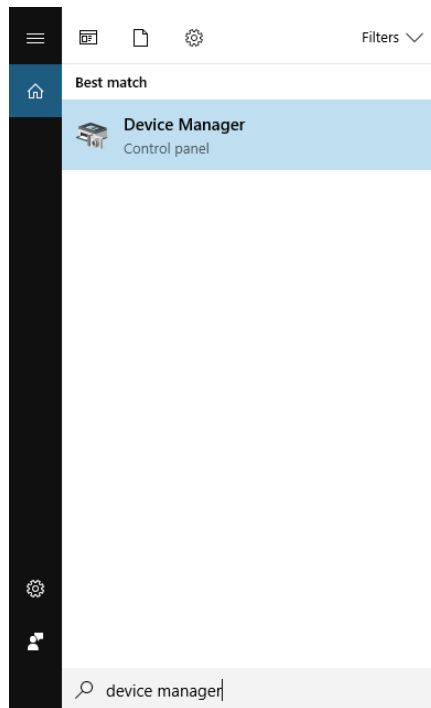
- **TCP/IP**

- 1) Connect network (RS232 TCP/IP) with computer
- 2) Open UX EvaluationPro software and select communication method: TCP/IP
- 3) Click edit
- 4) Input IP and Port of RS232 TCP/IP
- 5) If set correct, software will show message “Connected toIP : port.....” on communication log



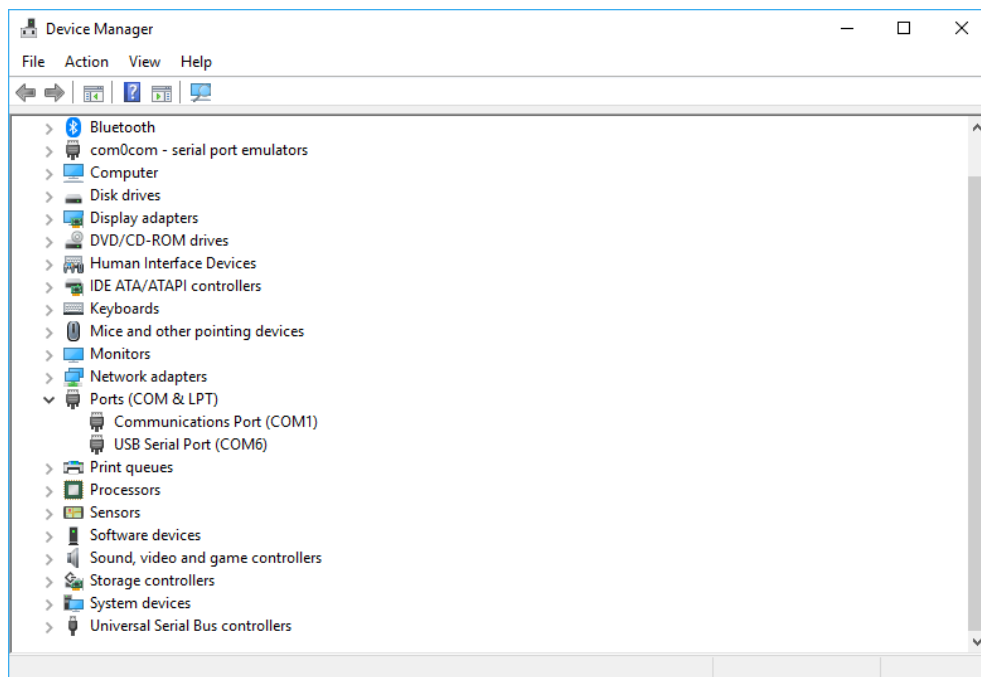
How to Check COM Port

- 1) Click **Start**, search the word “Device Manager”
- 2) Click **Device Manager**.



Picture 37: Open device manager

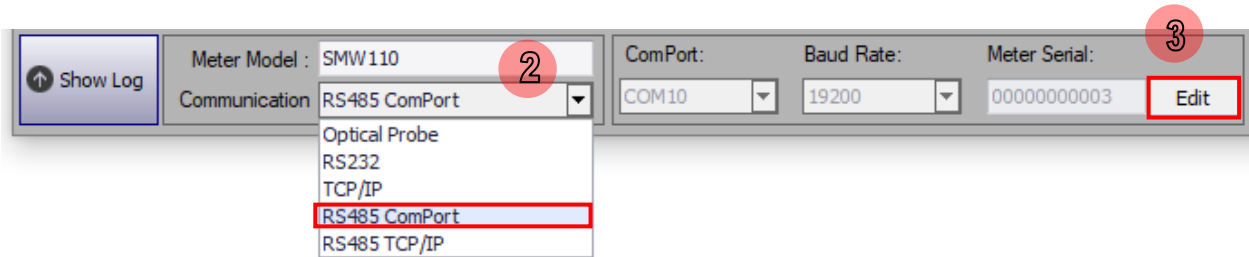
- 3) On Device Manager screen click **Port**.
- 4) Find “USB Serial Port” and check comport that use for optical probe.



Picture 38: Device manager screen

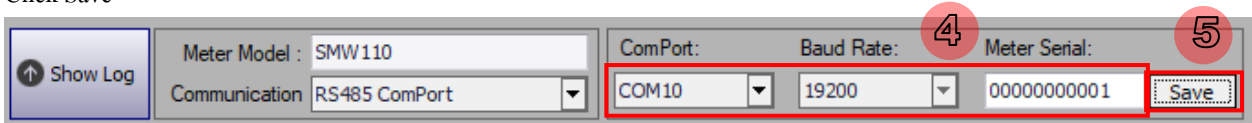
- **RS485 ComPort**

- 1) Connect network with computer
- 2) Open UX EvaluationPro software and select communication method: RS485 ComPort
- 3) Click Edit to set ComPort, Baud Rate and Meter Serial to connect a meter



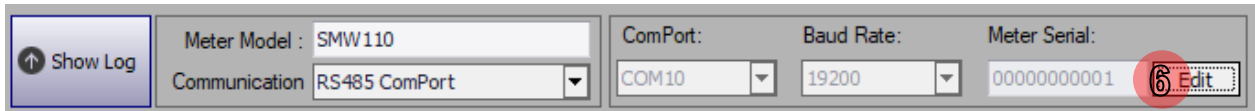
Picture 39: Select RS485 ComPort method to connect a meter

- 4) Set ComPort, Baud Rate and Meter Serial to connect a meter
- 5) Click Save



Picture 40: Set ComPort, Baud Rate, and Meter Serial

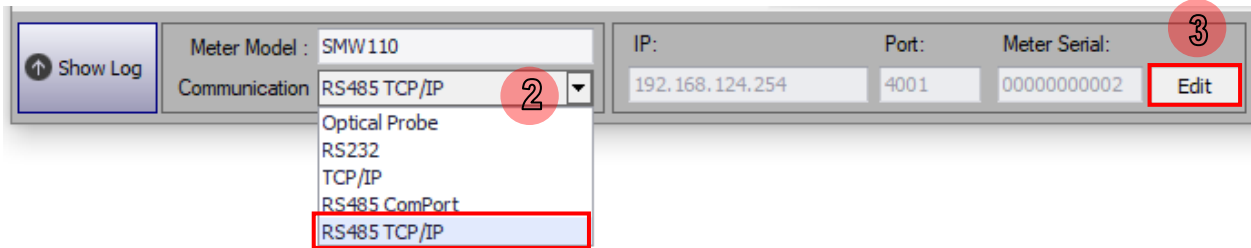
- 6) If set correct, software will show message “Connected to ...” on communication log



Picture 41: Connected to a meter with RS485 ComPort

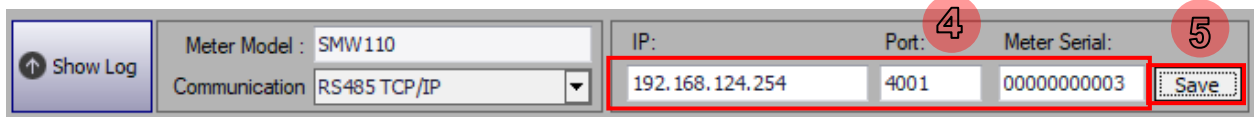
- **RS485 TCP/IP**

- 1) Connect network with computer
- 2) Open UX EvaluationPro software and select communication method: RS485 TCP/IP
- 3) Click Edit to set an IP, Port and Meter Serial to connect a meter



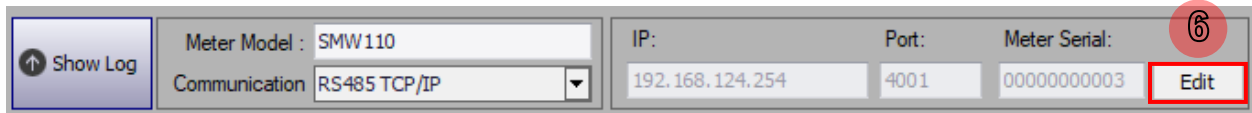
Picture 42: Select RS485 TCP/IP method to connect a meter

- 4) Set ComPort, Baud Rate and Meter Serial to connect a meter
- 5) Click Save



Picture 43: Set an IP, Port, and Meter Serial

- 6) If set correct, software will show message “Connected toIP : port.....” on communication log

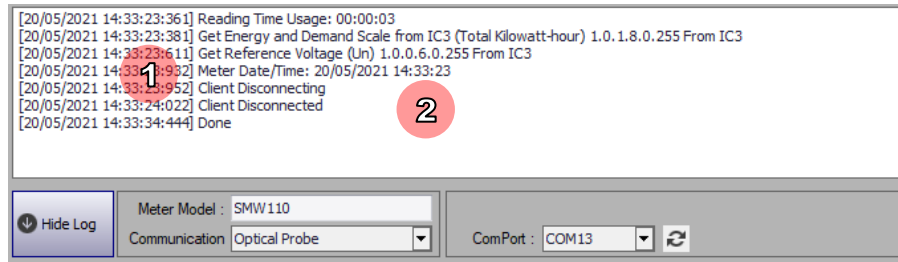


Picture 44: Connected to a meter with RS485 TCP/IP

3.5 Communication Log

Communication log of UX EvaluationPro is used for detect and show status during the software is communicating with a meter.

Communication Log Structure



Picture 45: Communication log

- 1) **Communication Date Time:** Show communication date and time.
- 2) **Description message:** Show communication description such as port initialized, connect to meter, disconnect.

Log Message Description

No.	Log Message	Description
1	Client Initialized	Inner process to initial client, this will process when starting application.
2	Port Initialized	Initialize comport. If has default comport in configuration file, will initialize default comport. If no default comport, will initialize first comport in dropdown list. (status bar in main screen)
3	Port Close	Close comport, occur when change comport from dropdown list. (close for initialize selected new comport)
4	Connected to Meter S/N: {S/N}	Connect to meter successful. By {S/N} is meter serial number.
5	Disconnected	Disconnect from meter successful.
6	SNRM Fail	Cannot connect to meter. (check communication port)
7	AARQ Fail	Cannot connect to meter. (check association level and password)
8	Read Billing Data	Start reading process for billing data.
9	Read Meter Data	Start reading process for meter data.
10	Read Meter Date and Time	Start reading process for meter date and time. (meter option)
11	Set Meter Date and Time by Synchronize with PC Date and Time	Start writing process for meter date and time by synchronize with pc date and time. (meter option)
12	Set Meter Date and Time by Manual	Start writing process for meter date and time by manual setting.
13	Manual Demand Reset	Start process to execute manual demand reset script.
14	Read Energy Compensation Value	Start reading process for energy compensation value. (energy error offset)
15	Set Energy Compensation Value	Start writing process for energy compensation value. (energy error offset)
16	Read Current Firmware	Start reading process to read current firmware version.
17	Upgrade Firmware	Start process to upgrade new firmware. (browsed firmware)
18	Start Image Transfer	Start process to transfer new image from file to meter. (take a several minute)
19	Image Transfer Fail. Return Error {E}	Occur when process of transfer new image is failure. {E} is error code.

UX EvaluationPro Software User Manual Standard Package

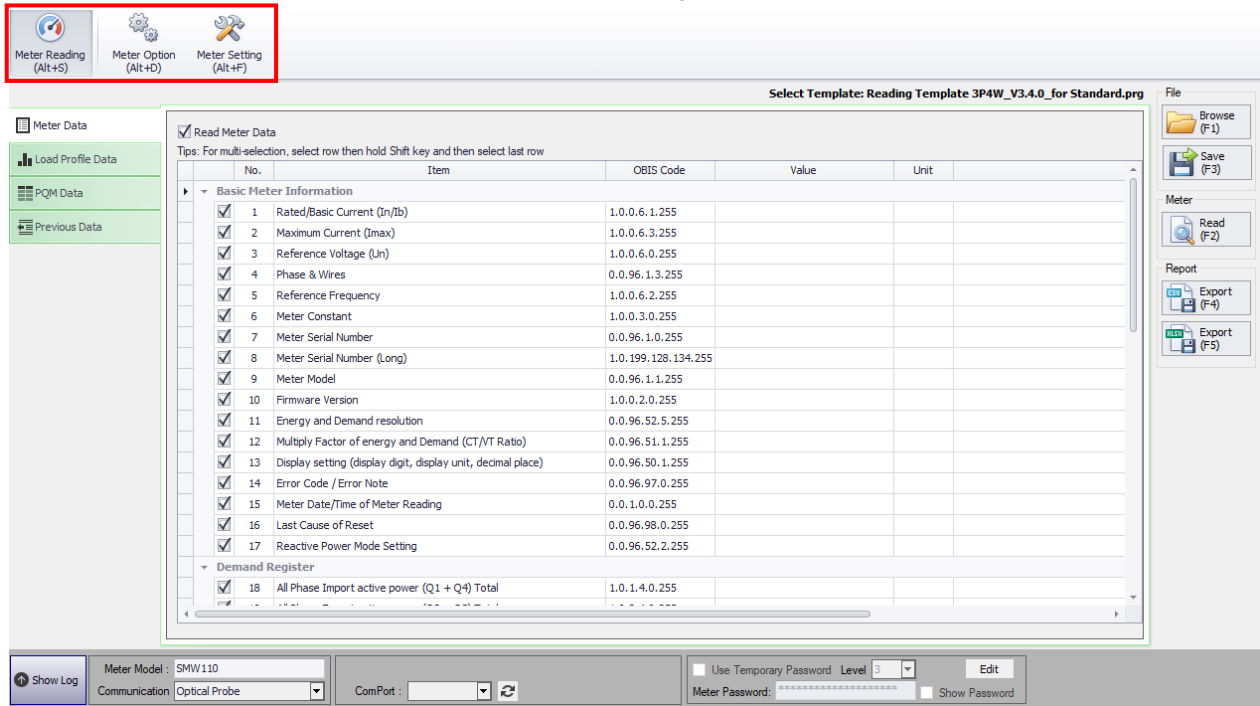
No.	Log Message	Description
		(see error description from Kalkitech DLMS Client OCL document)
20	Image Transfer Usage Time: {Time}	Image transfer complete, display usage transfer time. {Time} is usage time of image transfer process.
21	Verifying Transferred Image	Start process to verify new image (wait for 1 minute), will return status of verification follow <ul style="list-style-type: none"> - Image Verification Successful (status: 3), continue to activate new image process. - Image Verification Failed (status: 4), stop process, upgrade new firmware failure.
22	Activating Transferred Image	Start process to activate new image (wait for 5 seconds), will return status of activation follow <ul style="list-style-type: none"> - Image Activation Successful (status: 6), upgrade new firmware successful. - Image Activation Failed (status: 7), stop process, upgrade new firmware failure.
23	Activating Default Image	Start process to activate default image in meter (wait for 5 seconds), will return status of activation follow <ul style="list-style-type: none"> - Image Activation Successful (status: 6), restore default firmware successful. - Image Activation Failed (status: 7), stop process, restore default firmware failure.
24	Clear Event Log and Counter	Start process to clear event log and counter.
25	Clear Metering Data	Start process to clear metering data.
26	Clear Alarm Register	Start process to clear alarm register.
27	Read Meter Setting	Start reading process for meter setting data.
28	Program Meter Setting	Start programming process for meter setting data.
29	Get [{N}] {Item Name} From IC{ID}	Process to get data from meter where <ul style="list-style-type: none"> - {N} is number of item in template. - {Item Name} is name of item in template. - {ID} is interface class of item in template.
30	No Read Permission for Attribute {I}	Displays when association has no read permission in attribute. {I} is attribute index.
31	Set [{N}] {Item Name} From IC{ID}	Process to set data to meter where <ul style="list-style-type: none"> - {N} is number of item in template. - {Item Name} is name of item in template. - {ID} is interface class of item in template.
32	No Write Permission for Attribute {I}	Displays when association has no write permission to attribute. {I} is attribute index.
33	Execute [{N}] {Item Name} From IC{ID}	Process to execute action to meter where <ul style="list-style-type: none"> - {N} is number of item in template. - {Item Name} is name of item in template. - {ID} is interface class of item in template.
34	No Action Permission for Method {I}	Display when association has no action permission to method. {I} is method index.
35	Skip Attribute/Method {I}	Display when skip to read item attribute, write item attribute or execute item method. {I} is attribute index or method index.
36	Meter Date/Time: {DateTime}	Display after finish read process or program process. {DateTime} is date and time read from meter.
37	Done	Display when process complete. (successful)
38	Project Name OK	Display when software connect to meter successfully with correct license file
39	License has No Access Right. Meter Project Name is {Project Name}, Please contact Administrator.	Display when software connect to meter unsuccessfully with incorrect license file {Project Name} is name of project name in meter.

Note:

1. Software will clear communication log after closed software.
2. Software will record all communication logs in text file. File will be saved in C:\MEATHUX EvaluationPro\Log

4 Meter Management

UX EvaluationPro software consists of 3 menus for Meter Management



Picture 46: UX EvaluationPro main screen for Meter Management



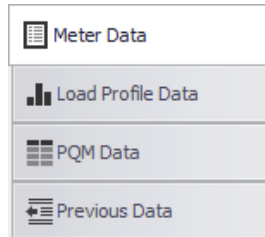
Picture 47: Meter Management menu

- 1) **Meter Reading:** Use for reading meter data, load profile data, PQM data, previous data. This menu able to read data from meter and export data to .csv file, .xlsx file
- 2) **Meter Option:** Use for reading, set change meter date and time
- 3) **Meter Setting:** Use for reading and setting data to meter as calendar setting, self-reading, and display setting and CT Ratio. This menu also able to save data to template file (.prg file) and export data to .csv file, .xlsx file

4.1 Meter Reading

4.1.1 Meter Reading Tab Menu

Meter reading menu consist of 4-tab menus: Meter Data, Load Profile, PQM Data, and Previous Data



Picture 48: Meter Reading menu tabs

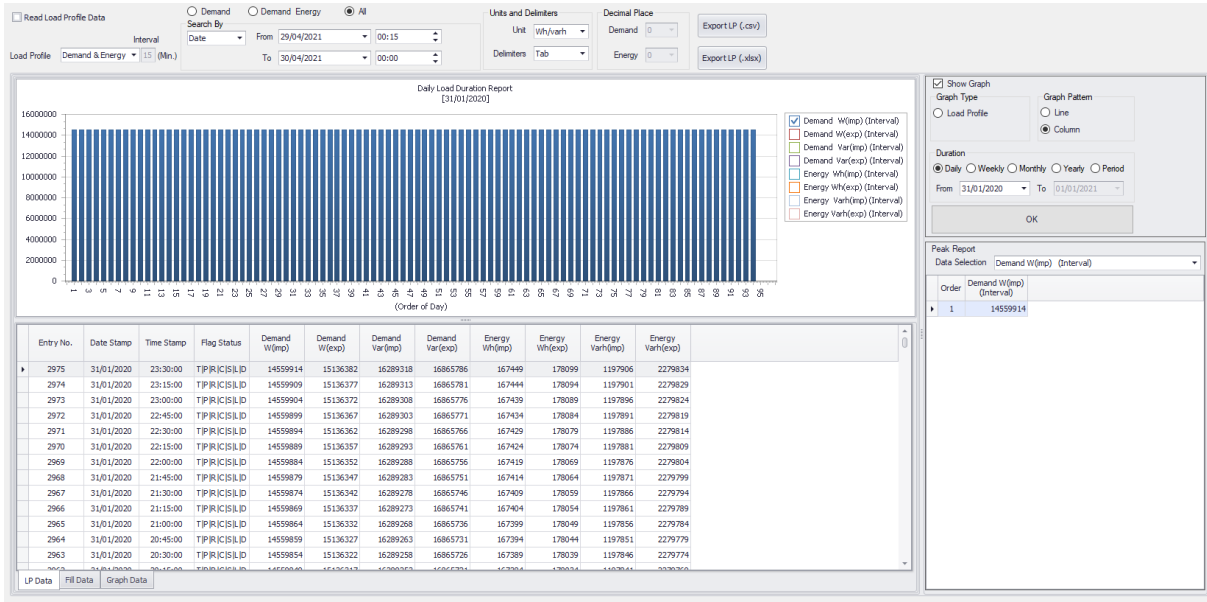
- 1) Meter Data Tab:** For read basic meter information, cumulative maximum demand register, demand register, maximum demand register and present total energy register.

Read Meter Data
 Tips: For multi-selection, select row then hold Shift key and then select last row

No.	Item	OBIS Code	Value	Unit
Basic Meter Information				
<input checked="" type="checkbox"/> 1	Meter Project Name	1.0.199.128.128.255		
<input checked="" type="checkbox"/> 2	Rated/Basic Current (In/Ib)	1.0.0.6.1.255		
<input checked="" type="checkbox"/> 3	Maximum Current (Imax)	1.0.0.6.3.255		
<input checked="" type="checkbox"/> 4	Reference Voltage (Un)	1.0.0.6.0.255		
<input checked="" type="checkbox"/> 5	Phase & Wires	0.0.96.1.3.255		
<input checked="" type="checkbox"/> 6	Reference Frequency	1.0.0.6.2.255		
<input checked="" type="checkbox"/> 7	Meter Constant	1.0.0.3.0.255		
<input checked="" type="checkbox"/> 8	Meter Serial Number	0.0.96.1.0.255		
<input checked="" type="checkbox"/> 9	Meter Serial Number (Long)	1.0.199.128.134.255		
<input checked="" type="checkbox"/> 10	Meter Model	0.0.96.1.1.255		
<input checked="" type="checkbox"/> 11	Firmware Version	1.0.0.2.0.255		
<input checked="" type="checkbox"/> 12	Energy and Demand resolution	0.0.96.52.5.255		
<input checked="" type="checkbox"/> 13	Multiply Factor of energy and Demand (CT/VT Ratio)	0.0.96.51.1.255		
<input checked="" type="checkbox"/> 14	Display setting (display digit, decimal place,display unit)	0.0.96.50.1.255		
<input checked="" type="checkbox"/> 15	Error Code / Error Note	0.0.96.97.0.255		
<input checked="" type="checkbox"/> 16	Meter Date/Time of Meter Reading	0.0.1.0.0.255		
<input checked="" type="checkbox"/> 17	Last Cause of Reset	0.0.96.98.0.255		
<input checked="" type="checkbox"/> 18	Reactive Power Mode Setting	0.0.96.52.2.255		
Cumulative Maximum Demand Register				

Picture 49: Meter Data tab

2) **Load Profile Tab:** For read load profile data consist of Demand & Energy profile load profile and PQM load profile.



Picture 50: Load Profile tab

Demand and Energy load profile

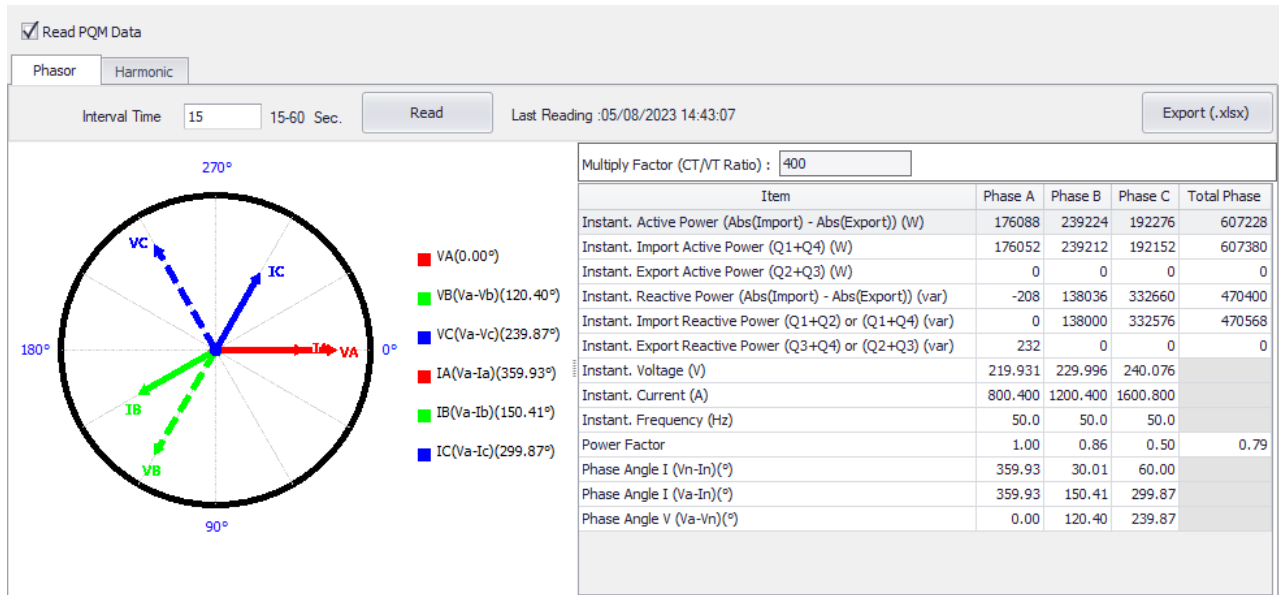
No.	Column Name	Description	3P4W	3P3W
1	Record No	For show record number	0	0
2	Date Stamp	For show date stamp	0	0
3	Time Stamp	For show time stamp	0	0
4	Flag Status	For show flag status (separate by " " (pipe))	0	0
5	Demand W(imp)	Show demand W(imp) value	0	0
6	Demand W(exp)	Show demand W(exp) value	0	0
7	Demand W Net (imp-exp)	Show demand W Net (imp-exp) value	0	0
8	Demand Var(imp)	Show demand Var(imp) value	0	0
9	Demand Var(exp)	Show demand Var(exp) value	0	0
10	Demand Var Net (imp-exp)	Show demand Var Net (imp-exp)value	0	0
11	Energy Wh(imp)	Show energy Wh(imp) value	0	0
12	Energy Wh(exp)	Show energy Wh(exp) value	0	0
13	Energy Wh Net (imp-exp)	Show energy Wh Net (imp-exp) value	0	0
14	Energy Varh(imp)	Show energy Varh(imp) value	0	0
15	Energy Varh(exp)	Show energy Varh(exp) value	0	0
16	Energy Varh Net (imp-exp)	Show energy Varh Net (imp-exp) value	0	0

PQM load profile.

No.	Column Name	Description	3P4W	3P3W
1	Record No	For show record number	0	0
2	Date Stamp	For show date stamp	0	0
3	Time Stamp	For show time stamp	0	0
4	Flag Status	For show flag status (separate by " " (pipe))	0	0
5	Voltage	Show voltage	-	-
6	Voltage A	Show voltage phase A	0	0
7	Voltage B	Show voltage phase B	0	-
8	Voltage C	Show voltage phase C	0	0
9	Current	Show current	-	-
10	Current A	Show current phase A	0	0
11	Current B	Show current phase B	0	0
12	Current C	Show current phase C	0	0
13	Current N (Virtual)	Show current phase N	0	0
14	THD_V	Show THD_V	-	-
15	THD_V A	Show THD_V phase A	0	0
16	THD_V B	Show THD_V phase B	0	-
17	THD_V C	Show THD_V phase C	0	0
18	THD_I	Show THD_I	-	-
19	THD_I A	Show THD_I phase A	0	0

No.	Column Name	Description	3P4W	3P3W
20	THD_I B	Show THD_I phase B	0	0
21	THD_I C	Show THD_I phase C	0	0
22	PF All Phase	Show PF All phase	0	0
23	PF A	Show PF phase A	0	0
24	PF B	Show PF phase B	0	0
25	PF C	Show PF phase C	0	0
26	Angle Ia	Phase 1 phase angle (V1-I1)	0	0
27	Angle Ib	Phase 2 phase angle (V2-I2)	0	0
28	Angle Ic	Phase 3 phase angle (V3-I3)	0	0
29	Angle Vb	Phase angle (V1-V2)	0	0
30	Angle Vc	Phase angle (V3-V1)	0	0
31	Instant Voltage	Show Any Phase Instant voltage	-	-
32	Instant Voltage A	Show Instant Voltage A	0	0
33	Instant Voltage B	Show Instant Voltage B	0	-
34	Instant Voltage C	Show Instant Voltage C	0	0
35	Instant Current	Show Any Phase Instant current	-	-
36	Instant Current A	Show Instant Current A	0	0
37	Instant Current B	Show Instant Current B	0	0
38	Instant Current C	Show Instant Current C	0	0
39	Instant Current N	Show Instant Current N	0	0
40	Instant THD_V	Show Any Phase Instant THD voltage	-	-
41	Instant THD_V A	Show Instant THD_V A	0	0
42	Instant THD_V B	Show Instant THD_V B	0	-
43	Instant THD_V C	Show Instant THD_V C	0	0
44	Instant THD_I	Show Any Phase Instant THD current	-	-
45	Instant THD_I A	Show Instant THD_I A	0	0
46	Instant THD_I B	Show Instant THD_I B	0	0
47	Instant THD_I C	Show Instant THD_I C	0	0
48	Instant PF All Phase	Show Instant PF All phase	0	0
49	Instant PF A	Show Instant PF A	0	0
50	Instant PF B	Show Instant PF B	0	0
51	Instant PF C	Show Instant PF C	0	0
52	Instant Angle Ia	Show Instant Phase 1 phase angle (V1-I1)	0	0
53	Instant Angle Ib	Show Instant Phase 2 phase angle (V2-I2)	0	0
54	Instant Angle Ic	Show Instant Phase 3 phase angle (V3-I3)	0	0
55	Instant Angle Vb	Show Instant Phase angle (V1-V2)	0	0
56	Instant Angle Vc	Show Instant Phase angle (V3-V1)	0	0

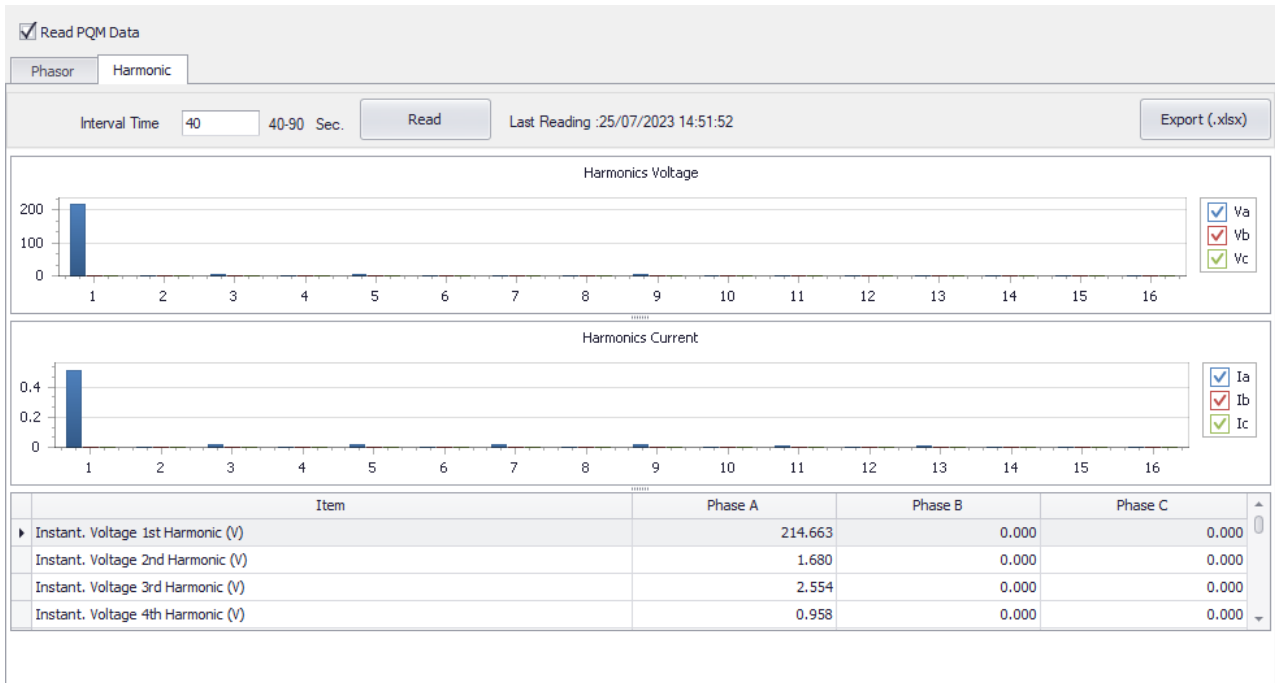
3) PQM Data Tab: For read phasor, harmonics.



Picture 51: PQM Data tab (Phasor)

Phasor data

No.	Column Name	Description
1	Item	For show item
2	Phase A	For show data of Phase A
3	Phase B	For show data of Phase B
4	Phase C	For show data of Phase C
5	Total Phase	For show data of Total phase



Picture 52: PQM Data tab (Harmonic)

Harmonics Voltage data, Harmonics Current data

No.	Column Name	Description
1	Item	For show item
2	Phase A	For show Harmonics data of Phase A
3	Phase B	For show Harmonics data of Phase B
4	Phase C	For show Harmonics data of Phase C

4) Previous Data Tab: For read previous data up to 12 previous

<input checked="" type="checkbox"/> Read Previous Data Unit : W/var			
No.	Item	OBIS Code	Value
1	Current Date/Time (Clock)	0.0.1.0.0.255	02/08/23 11:22:31
2	Billing Reset Count	1.0.0.1.1.255	3
3	Total Energy All Phase Import Active Energy (Q1 + Q4) [Total]	1.0.1.8.0.255	24595
4	Total Energy All Phase Export Active Energy (Q2 + Q3) [Total]	1.0.2.8.0.255	0
5	Total Energy All Phase Import Reactive Energy (Q1 + Q2) or (Q1 + Q4) [Total]	1.0.3.8.0.255	0
6	Total Energy All Phase Export Reactive Energy (Q3 + Q4) or (Q2 + Q3) [Total]	1.0.4.8.0.255	7208
7	Total Energy All Phase Reactive Energy (Q1) [Total]	1.0.5.8.0.255	0
8	Total Energy All Phase Import Active Energy (Q1 + Q4) [Tariff 1]	1.0.1.8.1.255	19509
9	Total Energy All Phase Export Active Energy (Q2 + Q3) [Tariff 1]	1.0.2.8.1.255	0
10	Total Energy All Phase Import Reactive Energy (Q1 + Q2) or (Q1 + Q4) [Tariff 1]	1.0.3.8.1.255	0
11	Total Energy All Phase Export Reactive Energy (Q3 + Q4) or (Q2 + Q3) [Tariff 1]	1.0.4.8.1.255	4767
12	Total Energy All Phase Reactive Energy (Q1) [Tariff 1]	1.0.5.8.1.255	0
13	Total Energy All Phase Import Active Energy (Q1 + Q4) [Tariff 2]	1.0.1.8.2.255	5086
14	Total Energy All Phase Export Active Energy (Q2 + Q3) [Tariff 2]	1.0.2.8.2.255	0
15	Total Energy All Phase Import Reactive Energy (Q1 + Q2) or (Q1 + Q4) [Tariff 2]	1.0.3.8.2.255	0
16	Total Energy All Phase Export Reactive Energy (Q3 + Q4) or (Q2 + Q3) [Tariff 2]	1.0.4.8.2.255	2441

Previous 1 Previous 2 Previous 3 Previous 4 Previous 5 Previous 6 Previous 7 Previous 8 Previous 9 Previous 10 Previous 11 Previous 12

Picture 53: Previous Data Tab

Previous Data

No.	Column Name	Description
1	No.	Show running no.
2	Item	Show item name
3	OBIS Code	Show OBIS Code of each item
4	Value	Show value
5	Remark	Show remark

Software support for viewing previous data with unit selected as

1) kW/kvar => to show data as kW/kvar

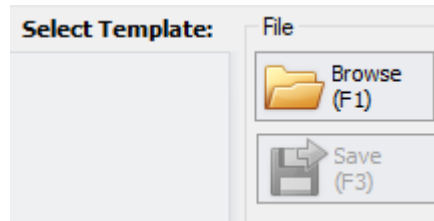
2) W/var => to show data as W/var

Default: kW/kvar

4.1.2 Browse File

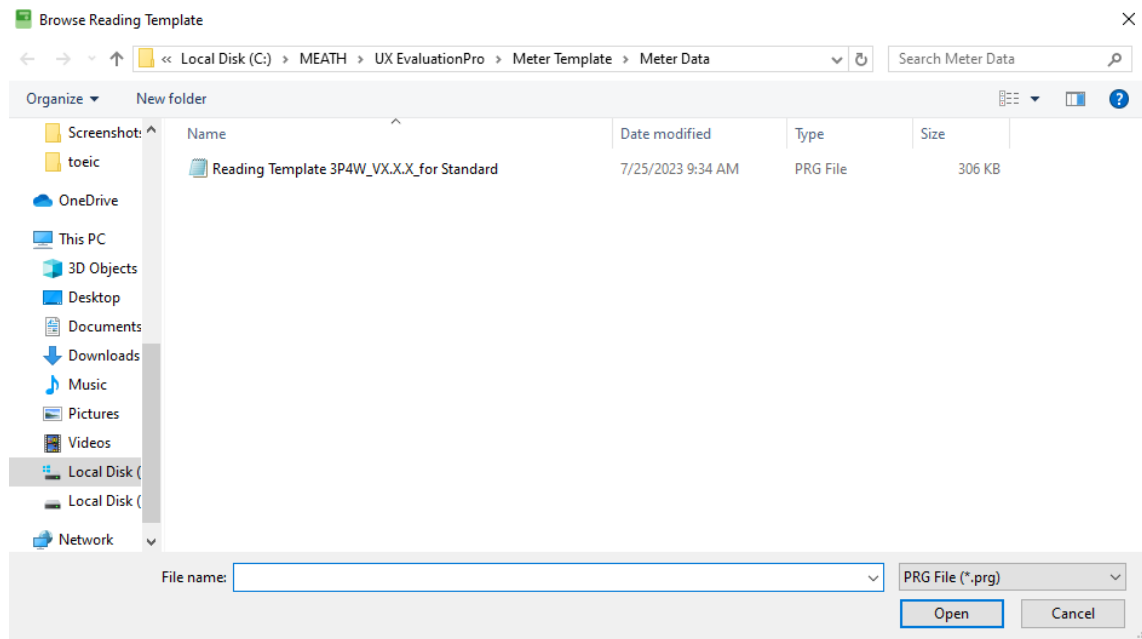
Before read data from meter we have to browse template file for use in reading operation.

- 1) Click **Browse** button or Press **F1** key.



Picture 54: Browse reading template button

- 2) Select template file (.prg file).
- 3) Click **Open** button.



Picture 55: Select reading template

4) After browse file software will show template name and item list.

Read Meter Data

Tips: For multi-selection, select row then hold Shift key and then select last row

No.	Item	OBIS Code	Value	Unit	Remark
Basic Meter Information					
<input checked="" type="checkbox"/> 1	Rated/Basic Current (In/Ib)	1.0.0.6.1.255		5.0 A	
<input checked="" type="checkbox"/> 2	Maximum Current (Imax)	1.0.0.6.3.255		100 A	
<input checked="" type="checkbox"/> 3	Reference Voltage (Un)	1.0.0.6.0.255		230.0 V	
<input checked="" type="checkbox"/> 4	Phase & Wires	0.0.96.1.3.255		3P4W	
<input checked="" type="checkbox"/> 5	Reference Frequency	1.0.0.6.2.255		50 Hz	
<input checked="" type="checkbox"/> 6	Meter Constant	1.0.0.3.0.255		5.000 1/(Wh)	
<input checked="" type="checkbox"/> 7	Meter Serial Number	0.0.96.1.0.255	00389765432		
<input checked="" type="checkbox"/> 8	Multiply Factor of energy and Demand (CT/VT Ratio)	0.0.96.51.1.255		1	
<input checked="" type="checkbox"/> 9	Error Code / Error Note	0.0.96.97.0.255		Er0000000	
<input checked="" type="checkbox"/> 10	Meter Date/Time of Meter Reading	0.0.1.0.0.255		01/02/2020 00:35:48	
Demand Register					
<input checked="" type="checkbox"/> 11	All Phase Import active power (Q1 + Q4) Total	1.0.1.4.0.255	14545029 14545129	W	current average value last average ...
<input checked="" type="checkbox"/> 12	All Phase Export active power (Q2 + Q3) Total	1.0.2.4.0.255	15121497 15121597	W	current average value last average ...
<input checked="" type="checkbox"/> 13	All Phase Import reactive power (Q1 + Q2) or (Q1 + Q4) Total	1.0.3.4.0.255	16274433 16274533	var	current average value last average ...
<input checked="" type="checkbox"/> 14	All Phase Export reactive power (Q3 + Q4) or (Q2 + Q3) Total	1.0.4.4.0.255	16850901 16851001	var	current average value last average ...
<input checked="" type="checkbox"/> 15	All Phase reactive power (Q1) Total	1.0.5.4.0.255	17427369 17427469	var	current average value last average ...
<input checked="" type="checkbox"/> 16	All Phase reactive power (Q2) Total	1.0.6.4.0.255	854633 854733	var	current average value last average ...
<input checked="" type="checkbox"/> 17	All Phase reactive power (Q3) Total	1.0.7.4.0.255	1667573 1667673	var	current average value last average ...
<input checked="" type="checkbox"/> 18	All Phase reactive power (Q4) Total	1.0.8.4.0.255	2480513 2480613	var	current average value last average ...

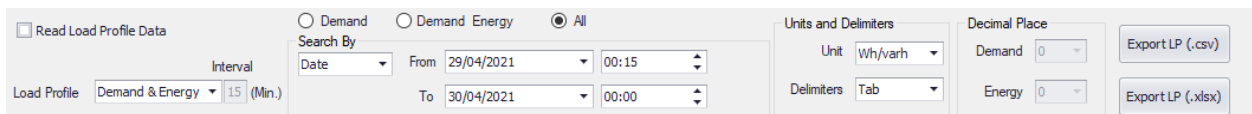
Picture 56: After browse reading template

4.1.3 Read Data

Note: Please browse template file before read data (See 4.3.2 Browse File)

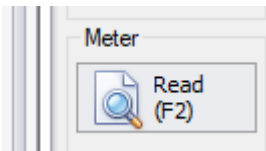
Software will read all data which check box mark for reading consist of Meter Data, Load Profile data, PQM, and Previous Data respectively

- For Meter Data tab, PQM data tab software support multiple check by
“Hold Ctrl button + checkbox select” for separate selection
“Hold Shift button + “start” checkbox to “end” check box for continued selection
- For Load Profile data, Event data reading has reading condition, User can change reading condition by follow step as
 - 1) Click Load Profile Data tab.
 - 2) Select load profile reading condition, read all, read by record number or read by date. Default record number is from 4701 to 4800, this range can be changed.
 - 3) If select Record No. input record range that want to read.



Picture 57: Read load profile condition

- 4) Click **Read** button or Press **F2** key.



Picture 58: Read button

5) During read meter software will show progress bar, please wait until finish.



Picture 59: Software is reading data

6) After

Read Meter Data

Tips: For multi-selection, select row then hold Shift key and then select last row

No.	Item	OBIS Code	Value	Unit	Remark
Basic Meter Information					
<input checked="" type="checkbox"/>	1	Rated/Basic Current (I _n /I _b)	1.0.0.6.1.255	5.0 A	
<input checked="" type="checkbox"/>	2	Maximum Current (I _{max})	1.0.0.6.3.255	100 A	
<input checked="" type="checkbox"/>	3	Reference Voltage (U _n)	1.0.0.6.0.255	230.0 V	
<input checked="" type="checkbox"/>	4	Phase & Wires	0.0.96.1.3.255	3P4W	
<input checked="" type="checkbox"/>	5	Reference Frequency	1.0.0.6.2.255	50 Hz	
<input checked="" type="checkbox"/>	6	Meter Constant	1.0.0.3.0.255	5.000 1/(Wh)	
<input checked="" type="checkbox"/>	7	Meter Serial Number	0.0.96.1.0.255	00389765432	
<input checked="" type="checkbox"/>	8	Multiply Factor of energy and Demand (CT/VT Ratio)	0.0.96.51.1.255	1	
<input checked="" type="checkbox"/>	9	Error Code / Error Note	0.0.96.97.0.255	Er0000000	
<input checked="" type="checkbox"/>	10	Meter Date/Time of Meter Reading	0.0.1.0.0.255	01/02/2020 00:35:48	
Demand Register					
<input checked="" type="checkbox"/>	11	All Phase Import active power (Q1 + Q4) Total	1.0.1.4.0.255	14545029 14545129 W	current average value last average ...
<input checked="" type="checkbox"/>	12	All Phase Export active power (Q2 + Q3) Total	1.0.2.4.0.255	15121497 15121597 W	current average value last average ...
<input checked="" type="checkbox"/>	13	All Phase Import reactive power (Q1 + Q2) or (Q1 + Q4) Total	1.0.3.4.0.255	16274433 16274533 var	current average value last average ...
<input checked="" type="checkbox"/>	14	All Phase Export reactive power (Q3 + Q4) or (Q2 + Q3) Total	1.0.4.4.0.255	16850901 16851001 var	current average value last average ...
<input checked="" type="checkbox"/>	15	All Phase reactive power (Q1) Total	1.0.5.4.0.255	17427369 17427469 var	current average value last average ...
<input checked="" type="checkbox"/>	16	All Phase reactive power (Q2) Total	1.0.6.4.0.255	854633 854733 var	current average value last average ...
<input checked="" type="checkbox"/>	17	All Phase reactive power (Q3) Total	1.0.7.4.0.255	1667573 1667673 var	current average value last average ...
<input checked="" type="checkbox"/>	18	All Phase reactive power (Q4) Total	1.0.8.4.0.255	2480513 2480613 var	current average value last average ...

Picture 60: Reading data finished

Meter Data Item for each user

No.	Item	OBIS Code	Login by	
			User	Advance
Basic Meter Information				
1	Rated/Basic Current (In/Ib)	1.0.0.6.1.255	O	O
2	Maximum Current (Imax)	1.0.0.6.3.255	O	O
3	Reference Voltage (Un)	1.0.0.6.0.255	O	O
4	Phase & Wires	0.0.96.1.3.255	O	O
5	Reference Frequency	1.0.0.6.2.255	O	O
6	Meter Constant	1.0.0.3.0.255	O	O
7	Meter Serial Number	0.0.96.1.0.255	O	O
8	Meter Serial Number (Long)	1.0.199.128.134.255	O	O
9	Meter Model	0.0.96.1.1.255	O	O
10	Firmware Version	1.0.0.2.0.255	O	O
11	Energy and Demand resolution	0.0.96.52.5.255	O	O
12	Multiply Factor of energy and Demand (CT/VT Ratio)	0.0.96.51.1.255	O	O
13	Display setting (display digit, decimal place, display unit)	0.0.96.50.1.255	O	O
14	Error Code / Error Note	0.0.96.97.0.255	O	O
15	Meter Date/Time of Meter Reading	0.0.1.0.0.255	O	O
16	Last Cause of Reset	0.0.96.98.0.255	O	O
17	Reactive Power Mode Setting	0.0.96.52.2.255	O	O
Demand Register				
18	All Phase Import active power (Q1 + Q4) Total	1.0.1.4.0.255	O	
19	All Phase Export active power (Q2 + Q3) Total	1.0.2.4.0.255	O	
20	All Phase Import reactive power (Q1 + Q2) or (Q1 + Q4)	1.0.3.4.0.255	O	
21	All Phase Export reactive power (Q3 + Q4) or (Q2 + Q3)	1.0.4.4.0.255	O	
22	All Phase reactive power (Q1) Total	1.0.5.4.0.255	O	
23	All Phase reactive power (Q2) Total	1.0.6.4.0.255	O	
24	All Phase reactive power (Q3) Total	1.0.7.4.0.255	O	
25	All Phase reactive power (Q4) Total	1.0.8.4.0.255	O	
Maximum Demand Register				
26	All Phase Import active power (Q1 + Q4) Total	1.0.1.6.0.255	O	
27	All Phase Export active power (Q2 + Q3) Total	1.0.2.6.0.255	O	
28	All Phase Import reactive power (Q1 + Q2) or (Q1 + Q4)	1.0.3.6.0.255	O	
29	All Phase Export reactive power (Q3 + Q4) or (Q2 + Q3)	1.0.4.6.0.255	O	
30	All Phase reactive power (Q1) Total	1.0.5.6.0.255	O	
31	All Phase reactive power (Q2) Total	1.0.6.6.0.255	O	
32	All Phase reactive power (Q3) Total	1.0.7.6.0.255	O	
33	All Phase reactive power (Q4) Total	1.0.8.6.0.255	O	
Present Energy Register				
34	All Phase active energy (Abs(Import)+Abs(Export)) Total	1.0.15.8.0.255	O	O
35	All Phase Import active energy (Q1 + Q4) Total	1.0.1.8.0.255	O	O

UX EvaluationPro Software User Manual Standard Package

No.	Item	OBIS Code	Login by	
			User	Advance
36	All Phase Import active energy (Q1 + Q4) Tariff 1	1.0.1.8.1.255	O	O
37	All Phase Import active energy (Q1 + Q4) Tariff 2	1.0.1.8.2.255	O	O
38	All Phase Import active energy (Q1 + Q4) Tariff 3	1.0.1.8.3.255	O	O
39	All Phase Export active energy (Q2 + Q3) Total	1.0.2.8.0.255	O	
40	All Phase reactive energy (Q1) Total	1.0.5.8.0.255	O	
41	All Phase reactive energy (Q2) Total	1.0.6.8.0.255	O	
42	All Phase reactive energy (Q3) Total	1.0.7.8.0.255	O	
43	All Phase reactive energy (Q4) Total	1.0.8.8.0.255	O	
44	Phase 1 Import active energy (Q1 + Q4) Total	1.0.21.8.0.255	O	O
45	Phase 1 Import reactive energy (Q1 + Q2) or (Q1+ Q4)	1.0.23.8.0.255	O	
46	Phase 1 Export reactive energy (Q3 + Q4) or (Q2 + Q3)	1.0.24.8.0.255	O	
47	Phase 2 Import active energy (Q1 + Q4) Total	1.0.41.8.0.255	O	O
48	Phase 3 Import active energy (Q1 + Q4) Total	1.0.61.8.0.255	O	O

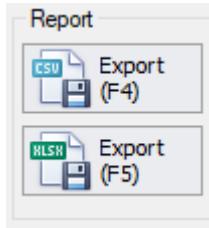
Note: In case login user is mismatched with meter supported, software will show “N/A” on item that meter has not support reading

4.1.4 Export Data

Software support exporting meter reading data file 2 format as *.csv files and *.xlsx files

- You can export meter reading report to CSV file by

1) After read data click **Export** button or Press **F4** key.



Picture 61: Export reading data button (CSV)

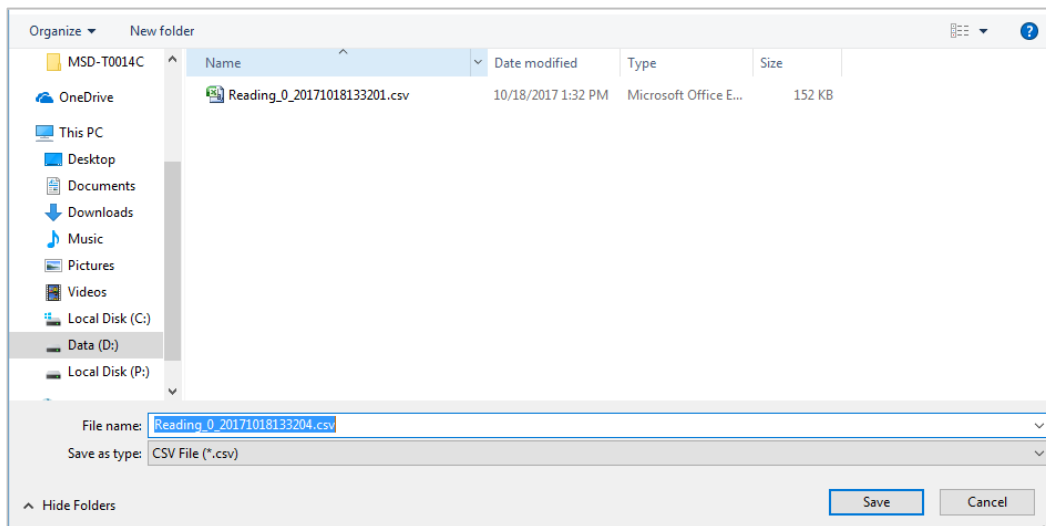
2) Software will generate file name automatically. Default file name is

Reading_[Meter Serial No.]_yyyyMMddHHmmss.csv

yyyyMMddHHmmss is date time example: 20171018133204

3) Select path to save file. Default save path is C:\MEATH\UX EvaluationPro\Meter Report\Meter Data

4) Click **Save** button.



Picture 62: Save reading report file (CSV)

5) The report file will be exported.

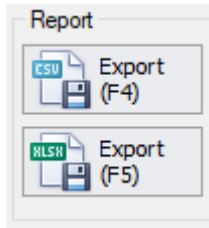
Name	Date modified	Type	Size
Reading_0_20171018133201.csv	10/18/2017 1:32 PM	Microsoft Office E...	152 KB
Reading_0_20171018133204.csv	10/18/2017 1:32 PM	Microsoft Office E...	152 KB

Picture 63: Export reading report finished (CSV)

Note: If reading data was unsuccessful, data in report file will be blank.

- You can export meter reading report to XLSX file by

1) After read data click **Export** button or Press **F5** key.



Picture 64: Export reading data button (XLSX)

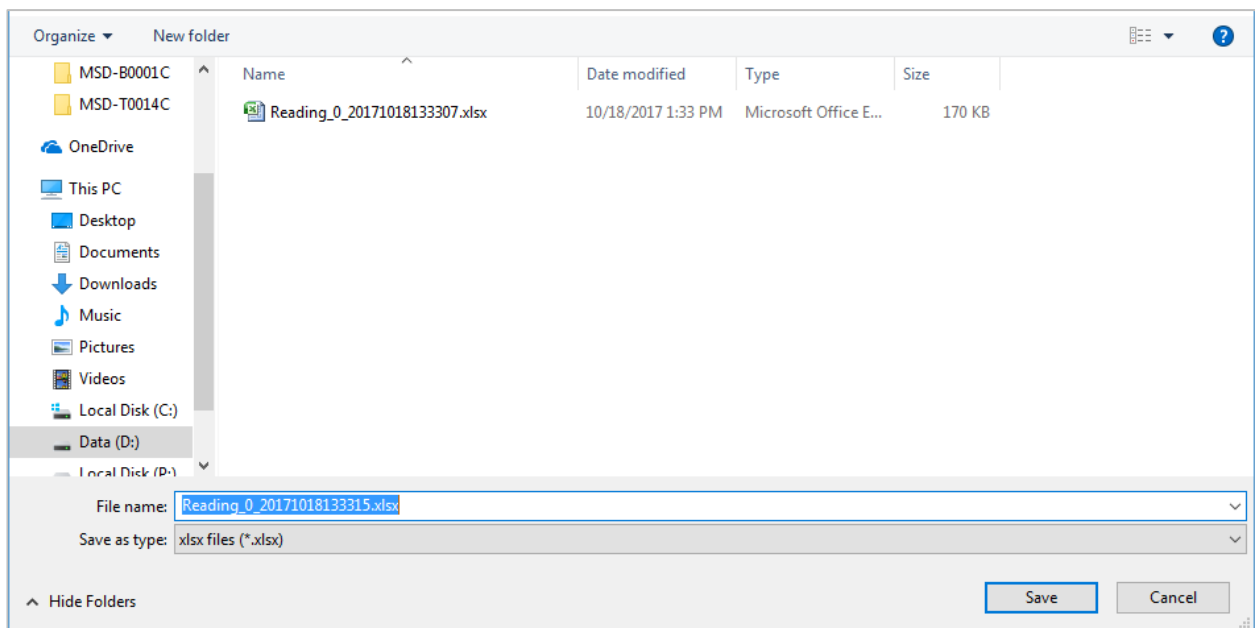
2) Software will generate file name automatically. Default file name is

Reading_[Meter Serial No.]._yyyyMMddHHmmss.xlsx

yyyyMMddHHmmss is date time example: 20171018133315

3) Select path to save file. Default save path is C:\MEATH\UX EvaluationPro\Meter Report\Meter Data

4) Click **Save** button.



Picture 65: Save reading report file (XLSX)

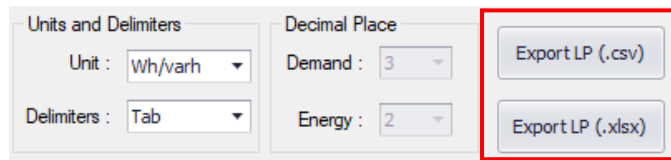
5) The report file will be exported.

Name	Date modified	Type	Size
Reading_0_20171018133307.xlsx	10/18/2017 1:33 PM	Microsoft Office E...	170 KB
Reading_0_20171018133315.xlsx	10/18/2017 1:33 PM	Microsoft Office E...	170 KB

Picture 66: Export reading report finished (XLSX)

Note: If reading data was unsuccessful, data in report file will be blank.

In Load Profile data screen, user can export only load profile data both CSV and XLSX file with unit and delimiters selected



Picture 67: Export load profile report

Note: Unit as follow

1) kWh/kvarh => display load profile data in kWh/kvarh unit

2) Wh/varh => display load profile data in Wh/varh unit

Default : kWh/kvarh

Delimiters as follow

1) Comma => in which the comma character (,) usually separates each field of text.

2) Tab => in which the TAB character usually separates each field of text.

3) Space => in which the Space character usually separates each field of text.

Default : Comma

1) After read data, open Load Profile Tab, Select Unit, Delimiters, select Load Profile (Demand & Energy/ PQM)

If Click **Export LP (.csv)** button.

Software will generate file name automatically. Default file name is

If select "Demand & Energy" => LP_[Meter Serial No.]_DemandEnergy_yyyyMMddHHmmss.csv

If select "PQM" => LP_[Meter Serial No.]_PQM_yyyyMMddHHmmss.csv

yyyyMMddHHmmss is date time example: 20171018134903

If Click **Export LP (.xlsx)** button.

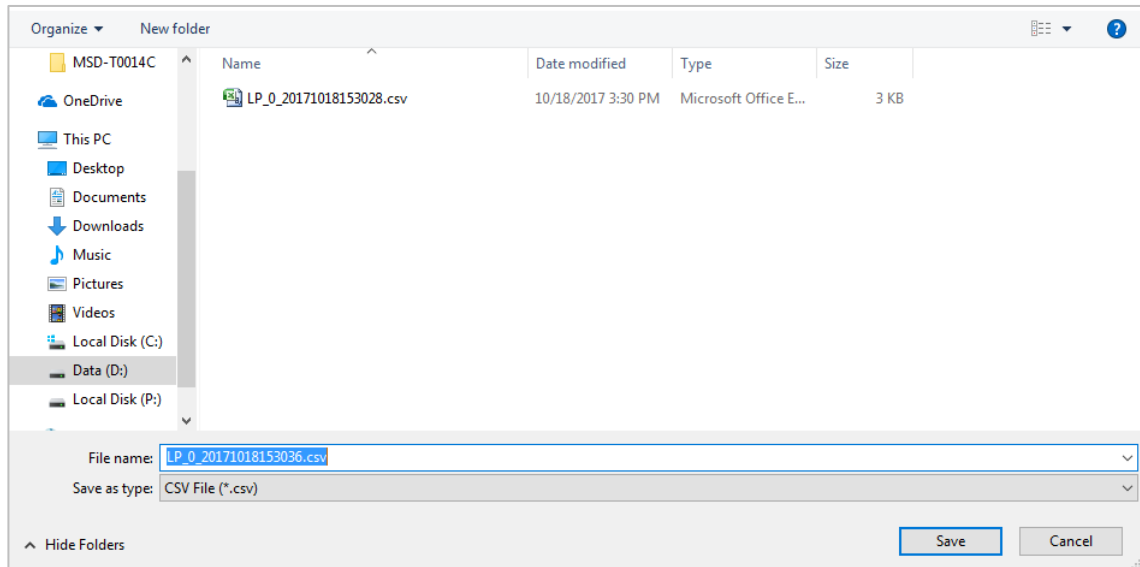
Software will generate file name automatically. Default file name is

If select "Demand & Energy" => LP_[Meter Serial No.]_DemandEnergy_yyyyMMddHHmmss.xlsx

If select "PQM" => LP_[Meter Serial No.]_PQM_yyyyMMddHHmmss.xlsx

yyyyMMddHHmmss is date time example: 20171018134903

- 2) Select path to save file. Default save path is C:\MEATH\UX EvaluationPro\Meter Report\Meter Data\Load Profile Data

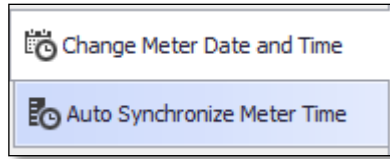


Picture 68: Save load profile report file

- 3) Click **Save** button.
- 4) The report file will be exported.

4.2 Meter Option

Meter option menu consist of 2-tab menus: Change Meter Date and Time, and Auto Synchronize Meter Time

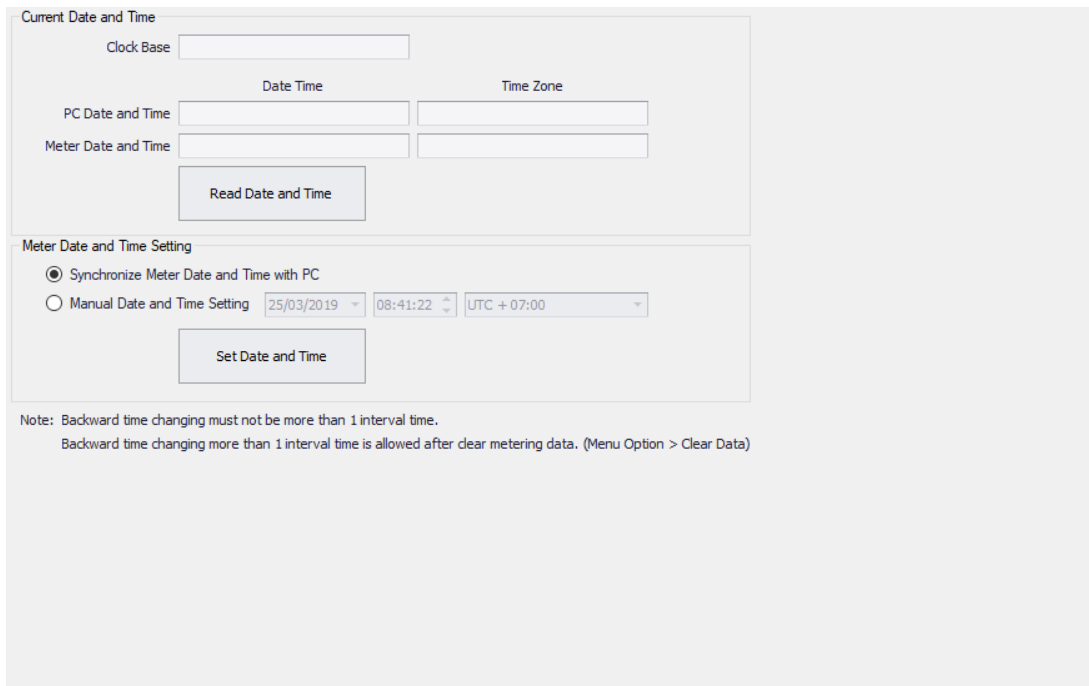


Picture 69: Meter Option menu tabs

4.2.1 Change Meter Date and Time

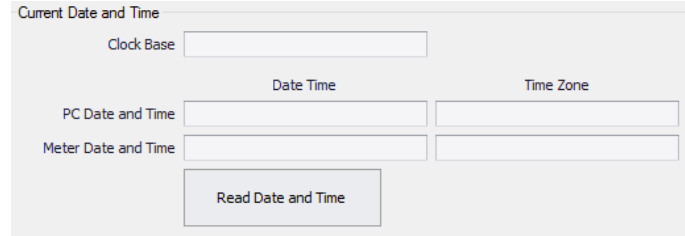
Read Current Date Time

- 1) Click **Meter Option => Change Meter Date and Time**

The screenshot displays a configuration window with two main sections. The top section, 'Current Date and Time', includes a 'Clock Base' dropdown, and two columns for 'Date Time' and 'Time Zone'. Each column has input fields for 'PC Date and Time' and 'Meter Date and Time', along with a 'Read Date and Time' button. The bottom section, 'Meter Date and Time Setting', has two radio buttons: 'Synchronize Meter Date and Time with PC' (selected) and 'Manual Date and Time Setting'. The manual setting includes dropdowns for date (25/03/2019), time (08:41:22), and time zone (UTC + 07:00), with a 'Set Date and Time' button. A note at the bottom states: 'Note: Backward time changing must not be more than 1 interval time. Backward time changing more than 1 interval time is allowed after clear metering data. (Menu Option > Clear Data)'.

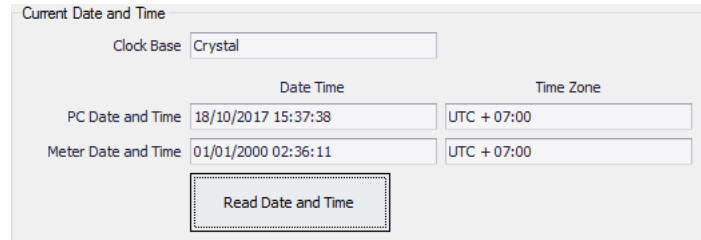
Picture 70: Change meter data and time option

- 2) Click **Read Date and Time** button to check date time of PC and meter.



Picture 71: Read data time

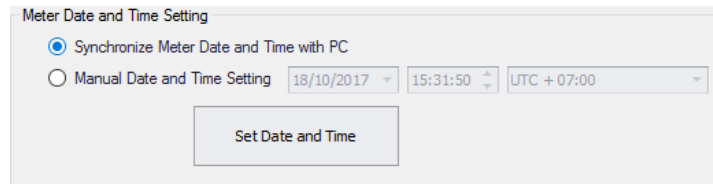
- 3) Software will show PC and meter date time.



Picture 72: Show date time

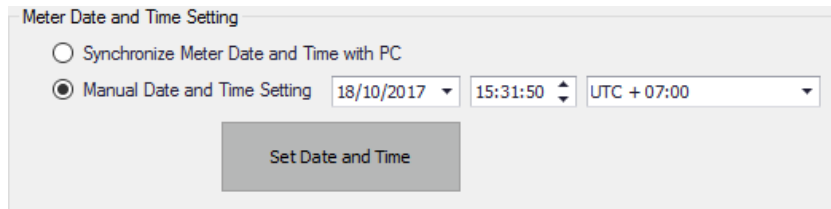
Set Date Time

- 1) To setting date and time to meter, please select setting option by synchronize with PC or manual.



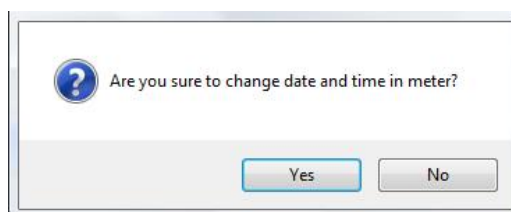
Picture 73: Synchronize data time with PC

- 2) If select Manual Date and Time Setting, please select date and time that want to set to meter.
- 3) Click **Set Date and Time** button.



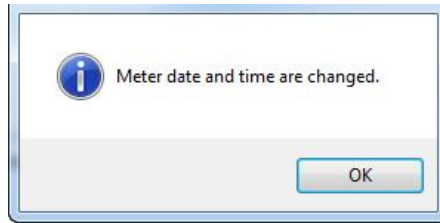
Picture 74: Manual set date time

- 4) Click **Yes**.



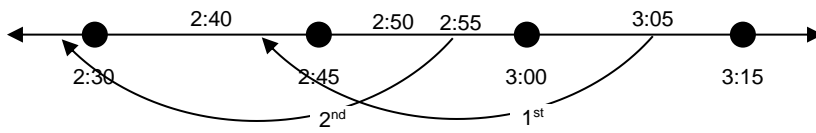
Picture 75: Confirm set date time

5) If set date time complete software will show message “Meter date and time are changed”.



Picture 76: Set date time complete

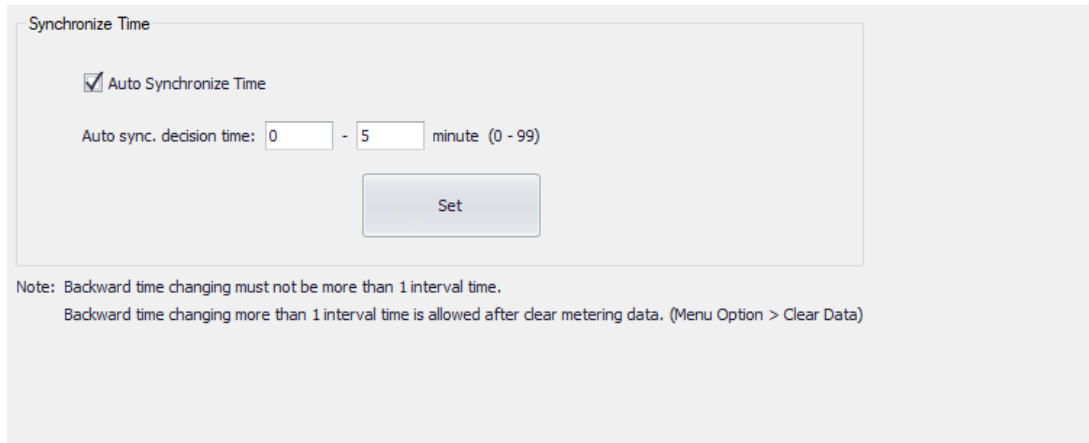
Note: Backward time changing must not be more than the Demand Interval Time



From the figure, the 2nd effort of System Time Changing must be blocked.

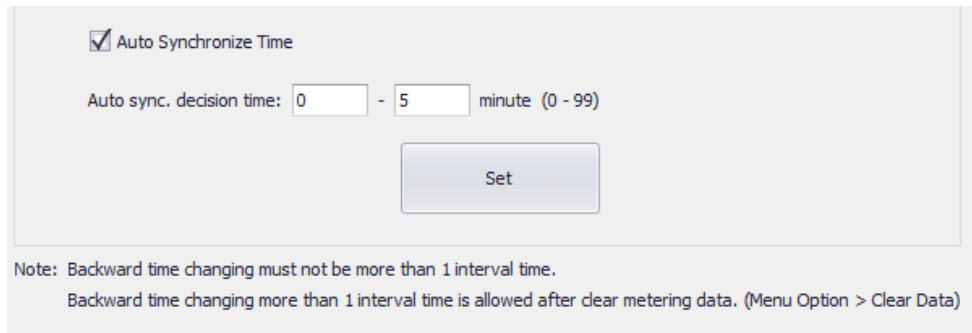
4.2.2 Auto Synchronize Meter Time

- 1) Click **Auto Synchronize Meter Time** tab.



Picture 77: Auto Synchronize Meter Time option

- 2) To **enable** auto synchronize meter time function: check **Auto Synchronize Time** checkbox
To **disable** auto synchronize meter time function: uncheck **Auto Synchronize Time** checkbox
- 3) If **enable** auto synchronize meter time function, input decision time (0-99 minutes)
Note: Auto synchronizes meter time will work, if different time of PC time and meter time in range of decision time.
- 4) To set condition of auto synchronize meter time function click **Set** button



Picture 78: Read current meter constant

Note: If auto synchronize meter time function is enable, it will work every time as connect meter.

- 5) If Auto synchronize meter time setting complete, software will show message “Setting successful”

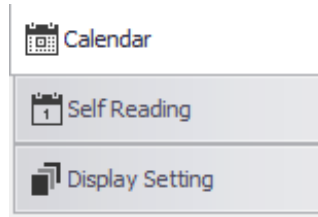


Picture 79: Auto synchronize meter time setting complete

4.3 Meter Setting

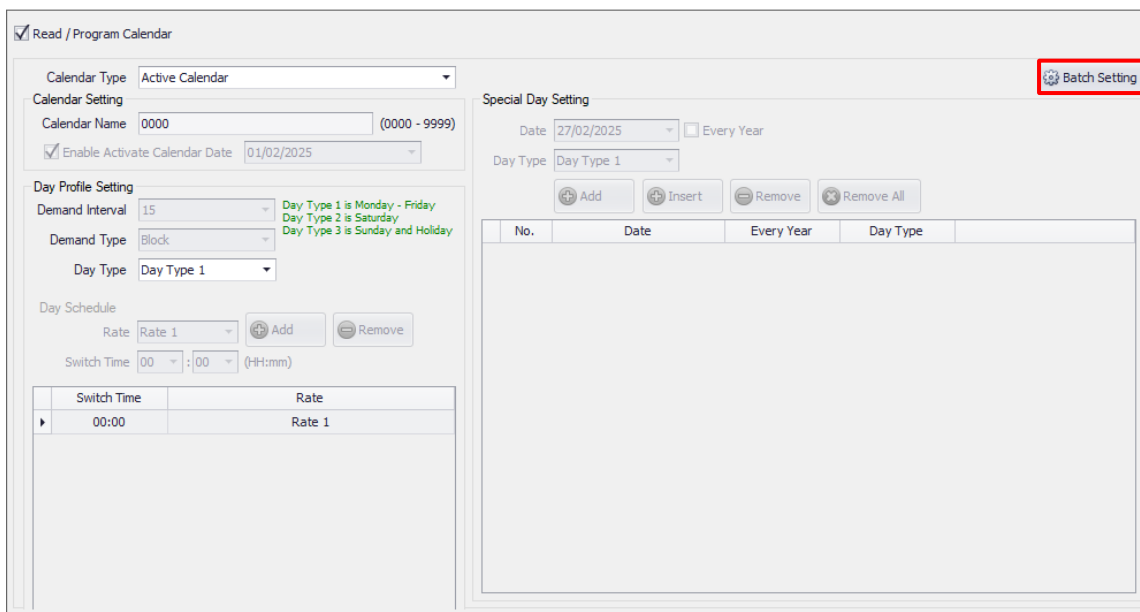
4.3.1 Meter Setting Tab Menu

Meter setting menu consist of 3-tab menu as Calendar Setting, Self-Reading, and Display Setting



Picture 80: Meter Setting menu tabs

1) **Calendar Tab:** For read active calendar and passive calendar, set day profile and special day of passive calendar.



Picture 81: Calendar tab

Note: Software has 3-day type as

Day Type 1 is Monday – Friday,

Day Type 2 is Saturday

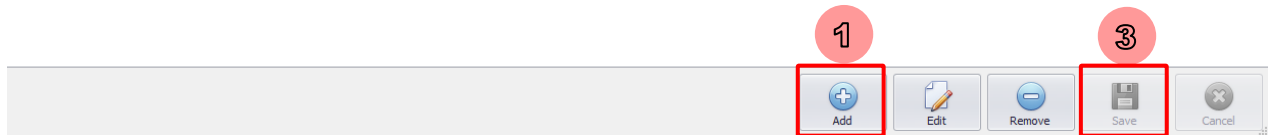
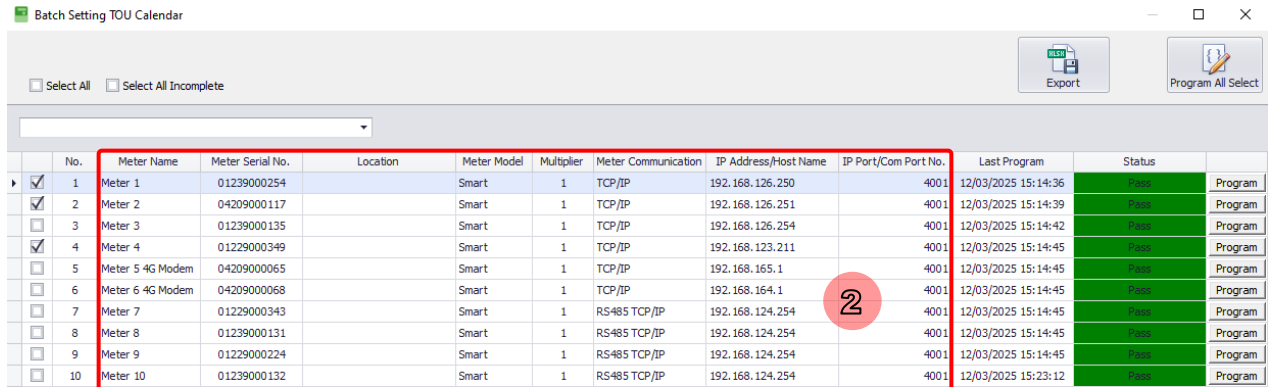
Day Type 3 is Sunday and Holiday

Maximum Switch Time /Day Schedule is 5 set

Maximum Special Day setting is 100 set

1.1) Batch Setting button: For Batch TOU Calendar Setting

- 1) Click **Add** button to add new meter in list.
- 2) To input required meter information data in data grid.

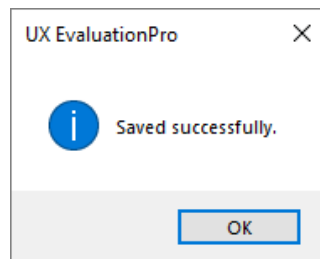


Picture 82: Batch Setting TOU Calendar screen

Note: Software has 3 communications for meter connection as

- **TCP/IP:** IP Address/Host Name, and IP Port/Com Port No. are required
- **RS485 TCP/IP:** IP Address/Host Name, and IP Port/Com Port No. are required
- **RS485 Comport:** IP Port/Com Port No. is required

- 3) Click **Save** button. If save data complete, software will show message “Saved successfully”.



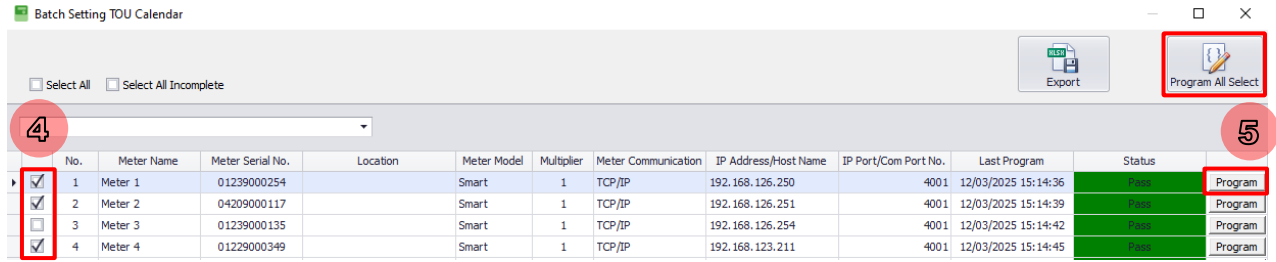
Picture 83: Add meter complete

- 4) Select checkbox row that want Program Batch TOU Calendar.

	No.	Meter Name	Meter Serial No.
<input checked="" type="checkbox"/>	1	Meter 1	01239000254
<input checked="" type="checkbox"/>	2	Meter 2	04209000117

Picture 84: Checkbox selection

5) Click **Program** button or click **Program All Select** button for program batch TOU calendar.



Picture 85:Program meter complete

After Programming, available status as table below

Status	Cause	BG Color
Blank	Default	White
Fail open port	Cannot open communication port	Red
Meter not response	Meter is disconnect	Red
Fail Connect	Password wrong	Red
Fail Project Name	Project name not support	Red
Meter not support	Meter model not support	Red
User Stop	User stop programing	Red
Fail	Some item fail while programing	Red
Pass	Pass programing	Green

2) **Self-Reading Tab:** For read and set end of billing data.

Read / Program Self-Reading

End of Billing (Self-Reading) Setting

Date

1 Last day of Month (1 ~ 28)

Date: 14/07/2020 Time: 00:00

Month/Year: 07/2020 Time: 00:00

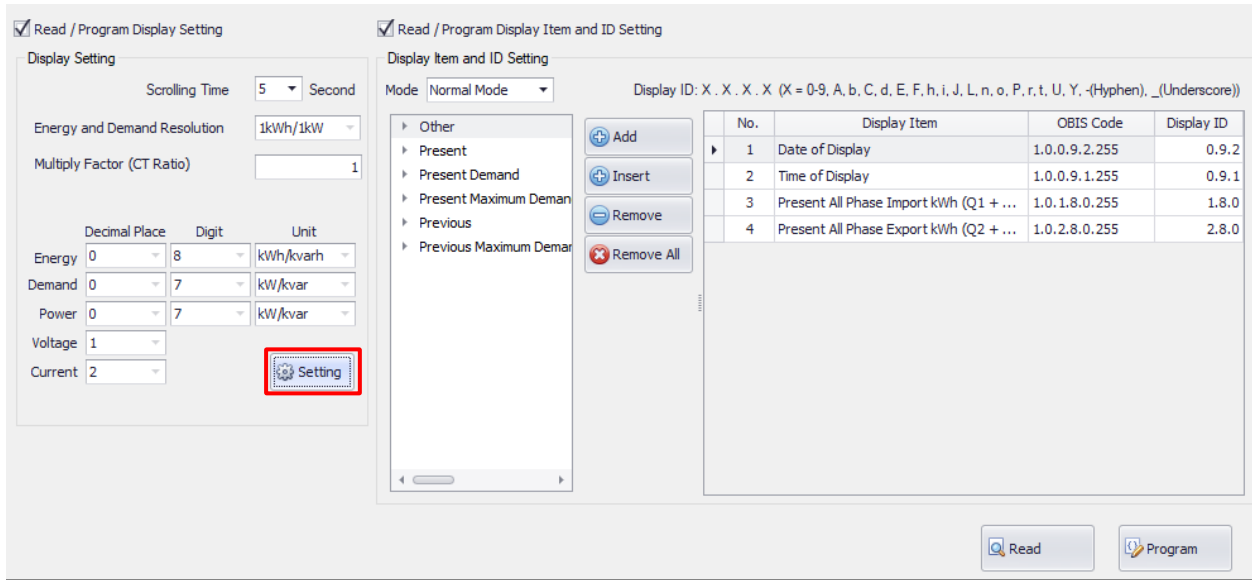
Every Month
 Every Year

No.	Date	Every Month	Every Year
▶ 1	01/MM/yyyy 01:01	<input checked="" type="checkbox"/>	<input checked="" type="checkbox"/>

Picture 86: Self-Reading tab

Note: Maximum End of Billing (Self-Reading) setting is 12 set

3) **Display Setting Tab:** For read and set display setting of meter.



Picture 87: Display Setting tab

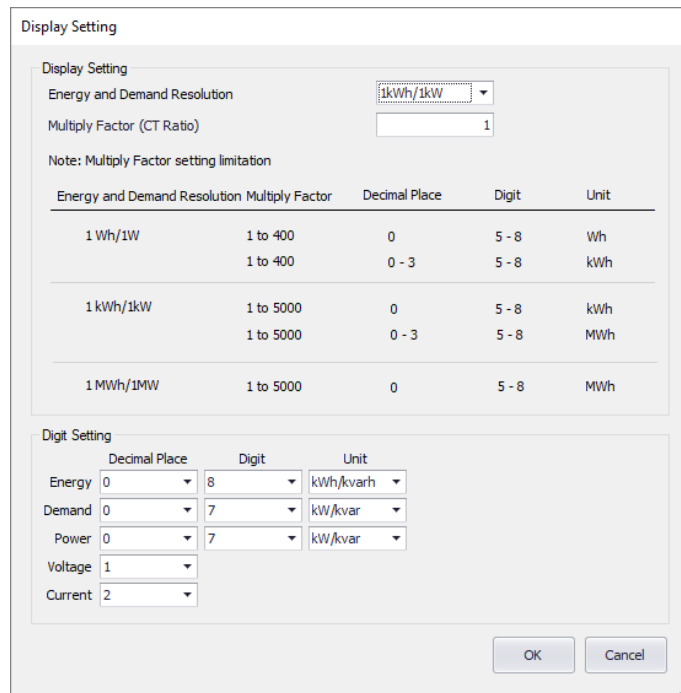
Note: Software has 3 modes for display item and id setting as Normal mode, Alternate mode and Backup mode

Maximum Display Item Setting for Normal mode is 40 set

Maximum Display Item Setting for Alternate mode is 40 set

Maximum Display Item Setting for Backup mode is 3 set

4.1) **Display Setting button:** For setting display group



Picture 88: Display Setting screen

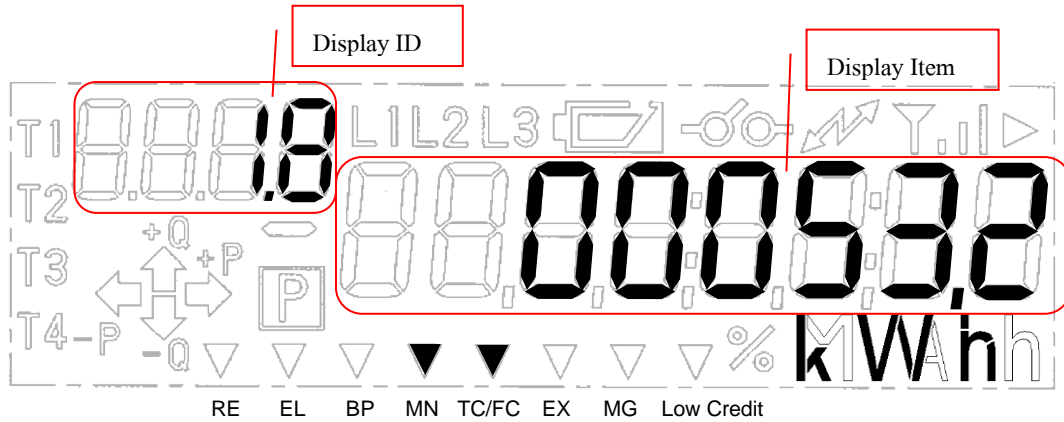
Example of LCD display is as the following

Display Item Setting is Total Rate All phase energy kWh (import)

Display ID Setting is 1.8

Terminal cover open tamper, Front cover open tamper and Missing Neutral tamper

Energy Digit Setting is 6



Picture 89: Meter Display

4.3.2 Browse File

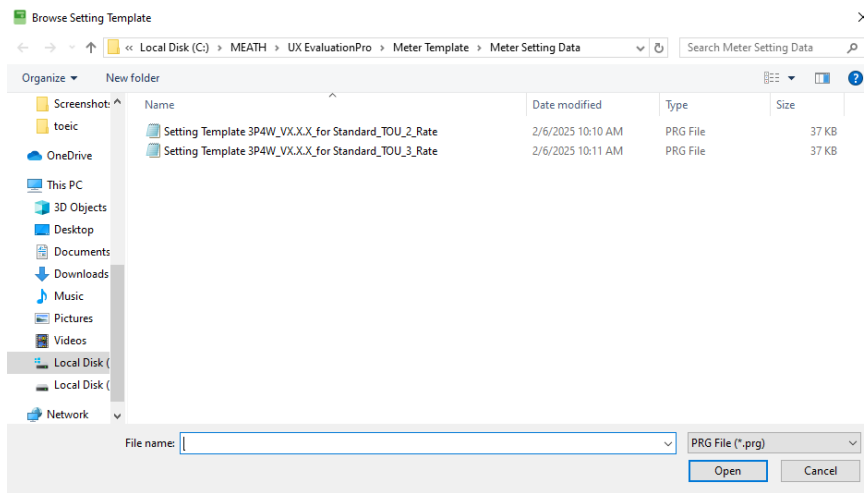
Before read data from meter or set data to meter we have to browse template file for use in reading and setting operation.

- 1) Click **Browse** button or Press **F1** key.



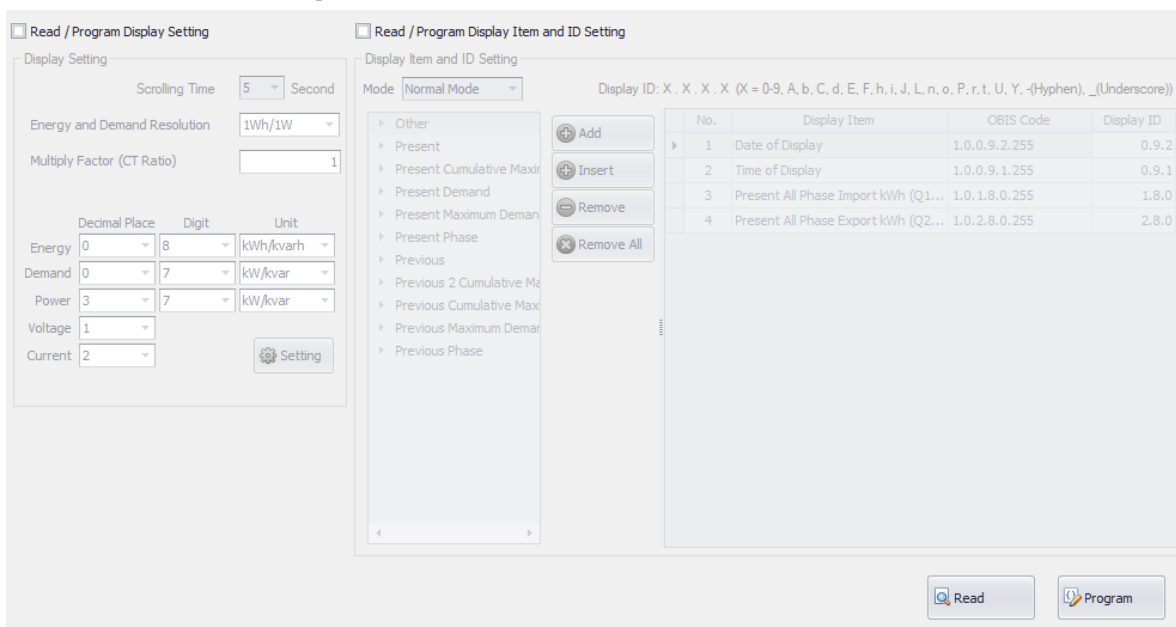
Picture 90: Browse setting template file button

- 2) Select template file (.prg file).
- 3) Click **Open** button.



Picture 91: Select setting template file

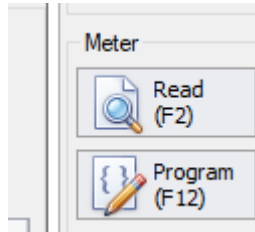
- 4) Software will show selected template name and show item list on table.



Picture 92: After browse setting template

4.3.3 Read Data

1) After browsed template file click **Read** button. Software will read item that checked on each checkbox of Display setting.



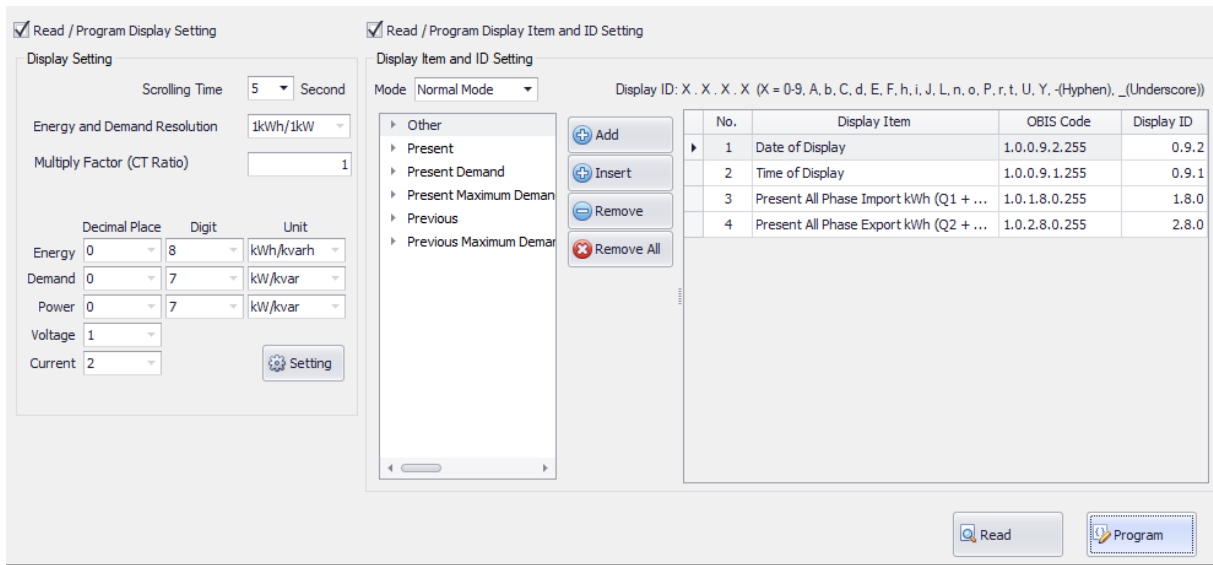
Picture 93: Read setting data button

2) Software will show progress bar during reading value from meter. Please wait until finish.



Picture 94: Reading progress bar

3) When finished reading software will show data in Display setting tabs.



Picture 95: Show setting data after read

For Calendar, and Self Reading, click **Read(F2)** button to read data from meter

For Display Setting, click **Read** button to read data from meter

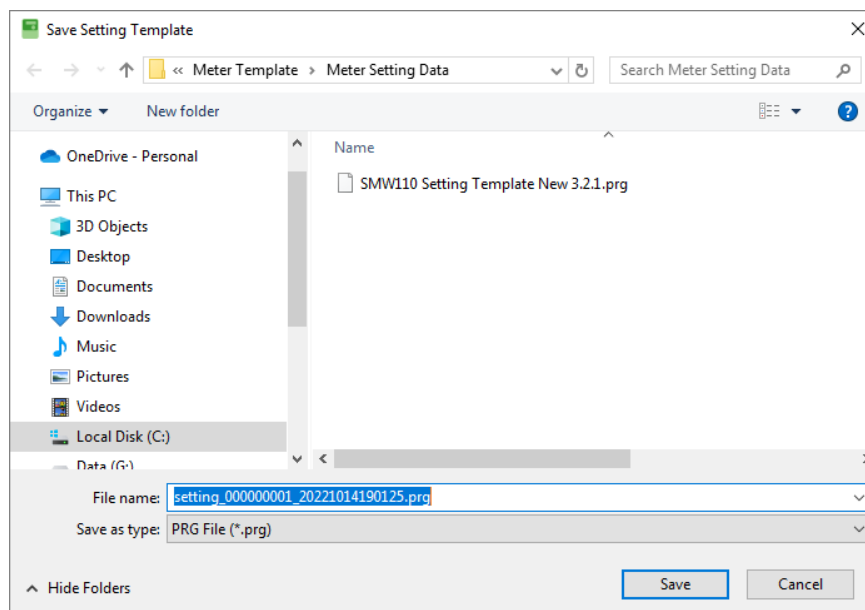
4.3.4 Save File

- 1) To save template file (.prg) click **Save** button or Press **F3** key.



Picture 96: Save setting template button

- 2) Select save file path.
- 3) If want to change file name, please input new file name.
- 4) Click **Save** button.



Picture 97: Save setting template

- 5) Software will save template file.

4.3.5 Program (Setting Data to Meter)

Note: Software will set items that be checked on checkbox Display setting tab.

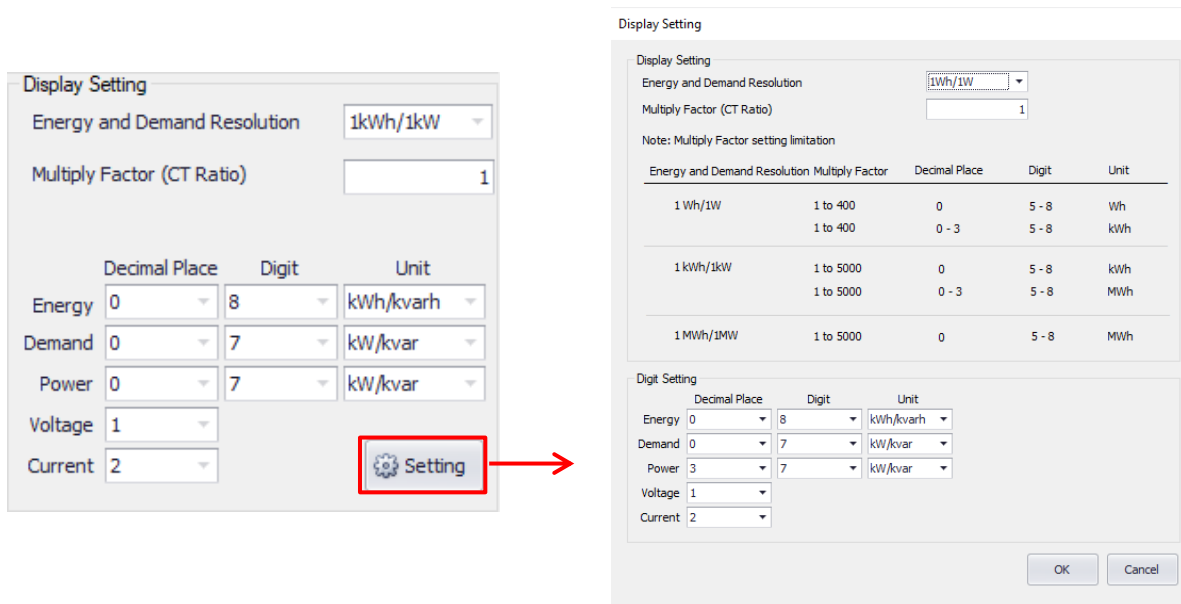
Recommend: User should read data from meter then modify data that want to set new value after that program to meter

- 1) On **Display Setting tab**, select scrolling time.



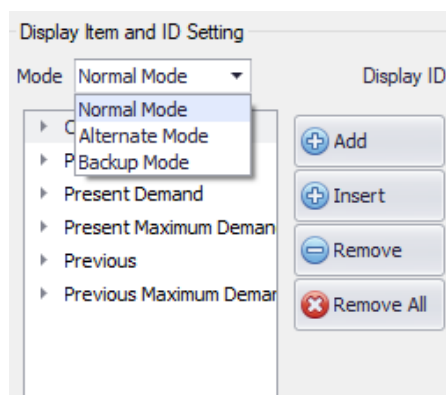
Picture 98: Scrolling time setting

- 2) Set display setting of energy, demand, power, Voltage, and Current.



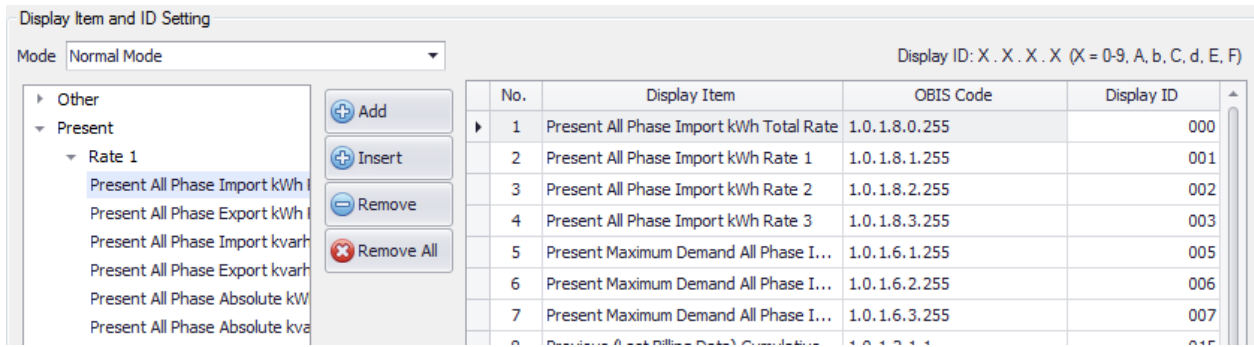
Picture 99: Display setting

- 3) Select mode.



Picture 100: Display mode setting

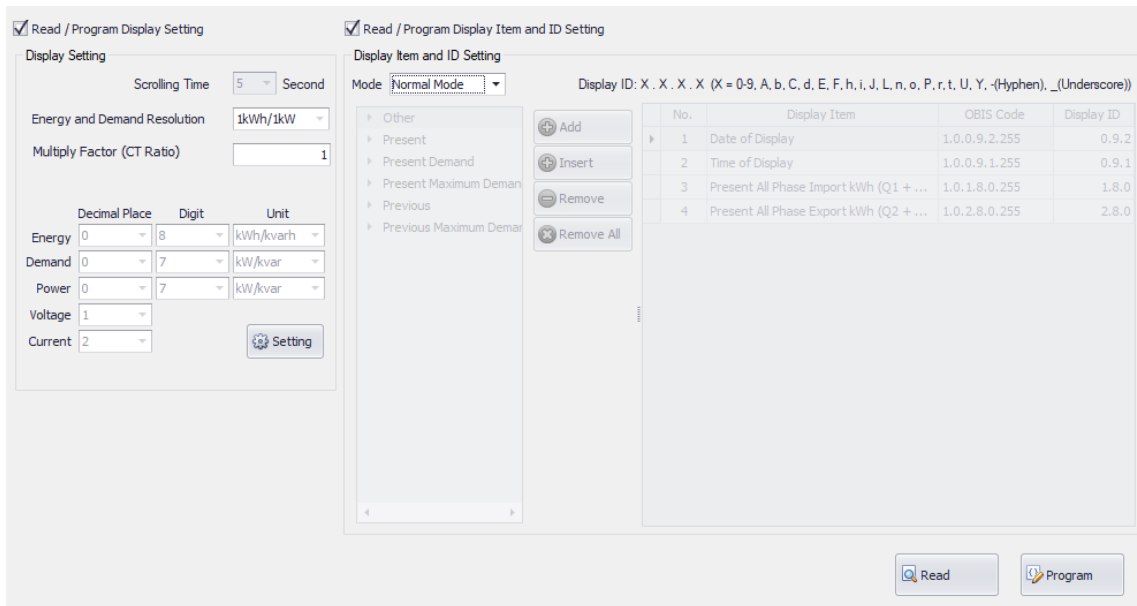
- 4) Select item and click **Add** button. Display Item will be added to bottom of display item list, Input Display ID which display item selected
- 5) Select item, select list of display item and click **Insert** button. Display Item will insert to above of selected display item list.



Picture 101: Add display item

If want to remove click **Remove** button or **Remove All** button.

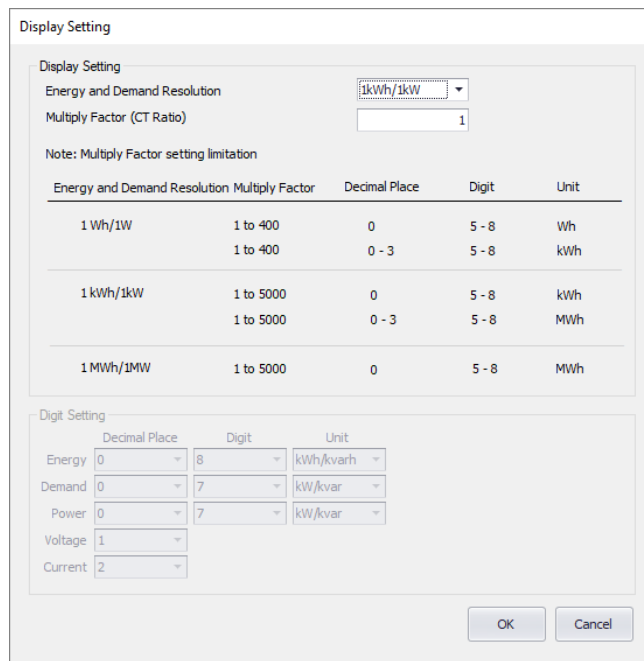
Note: for user login as “advance”, user can be set display setting only Energy and Demand Resolution and Multi Factor of Energy and Demand (CT/VT Ratio) only



Picture 102: Display setting main screen for user login as “advance”

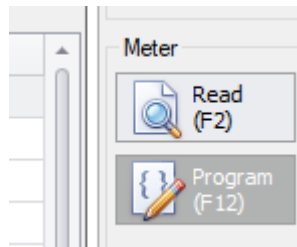
For Calendar, and Self Reading, click **Program (F12)** button to set data into meter

For Display Setting, click **Program** button to set data into meter



Picture 103: Display setting detail screen for user login as “advance”

- 6) Click **Program** button or Press **F12** key.



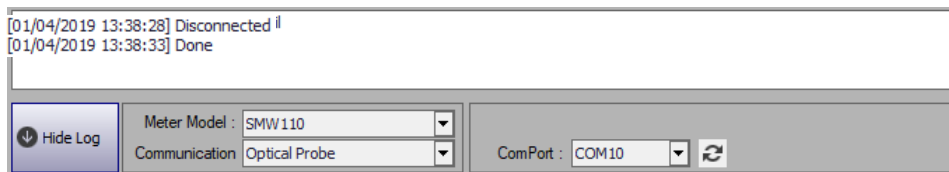
Picture 104: Program button

- 7) Software will show progress bar during program data to meter, please wait until finish.



Picture 105: Programming progress bar

- 8) After program data finished software will show message “Done” on communication log.



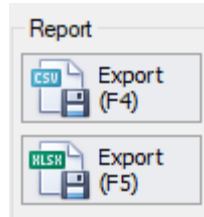
Picture 106: Program data to meter finished

4.3.6 Export Data

Software support exporting meter setting data file 2 format as *.csv files and *.xlsx files

- You can export meter setting report to CSV file by

1) To export setting report file (.csv) click **Export** button or Press **F4** key.



Picture 107: Export setting report button (CSV)

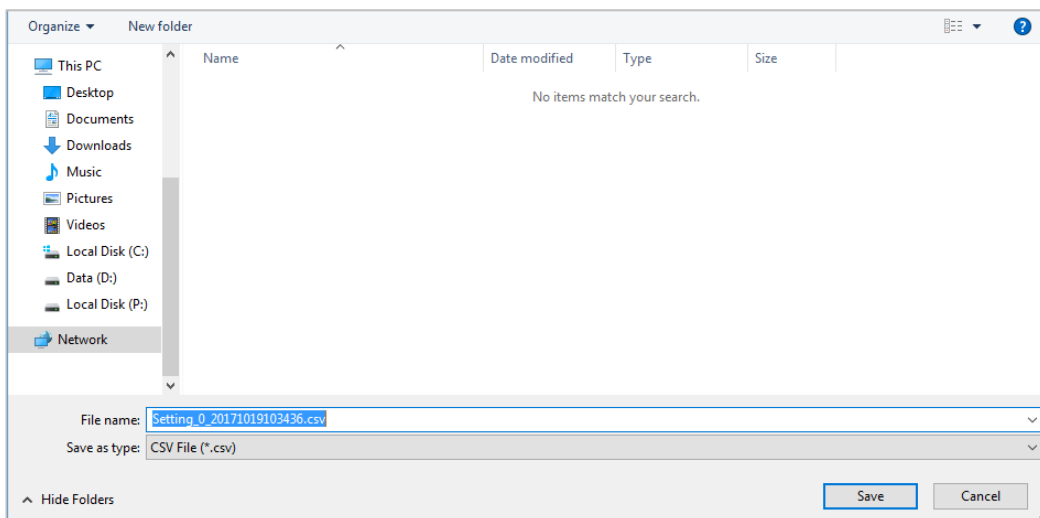
2) Software will generate file name automatically. Default file name is

Setting_[Meter Serial No.]_yyyyMMddHHmmss.csv

yyyyMMddHHmmss is date time example: 20171019103436

3) Select path to save file. Default save path is C:\MEATH\UX EvaluationPro\Meter Report\Meter Setting Data

4) Click **Save** button.

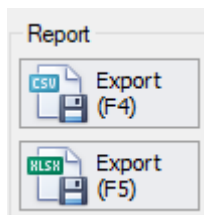


Picture 108: Save setting report (CSV)

5) Report file will be exported.

- You can export meter setting report to XLSX file by

1) To export setting report file (.xlsx) click **Export** button or Press **F5** key.



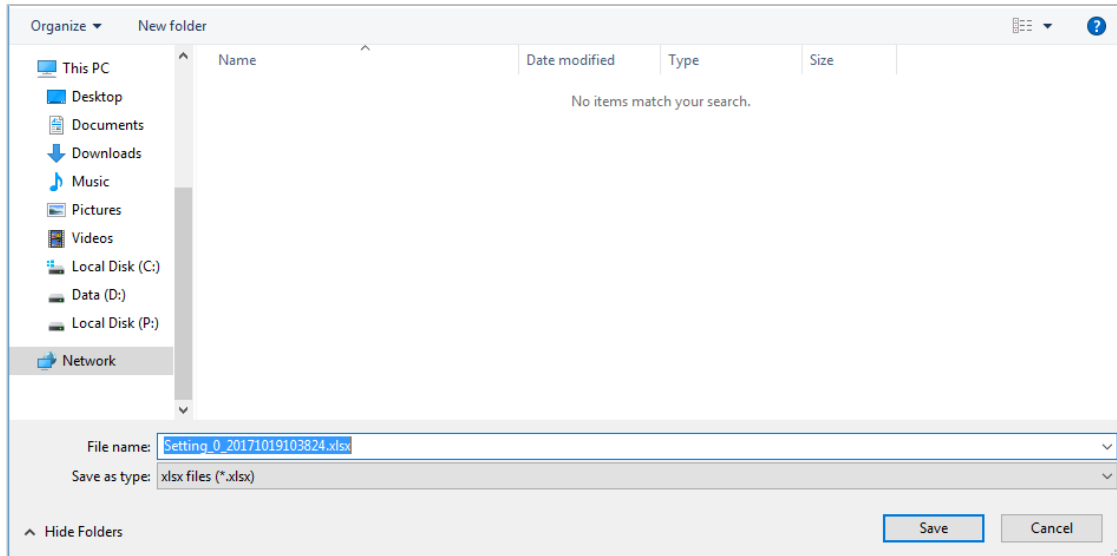
Picture 109: Export reading data button (XLSX)

2) Software will generate file name automatically. Default file name is
Setting_[Meter Serial No.]_yyyyMMddHHmmss.xlsx

yyyyMMddHHmmss is date time example: 20171019103824

3) Select path to save file. Default save path is C:\MEATH\UX EvaluationPro\Meter Report\Meter Data

4) Click **Save** button.

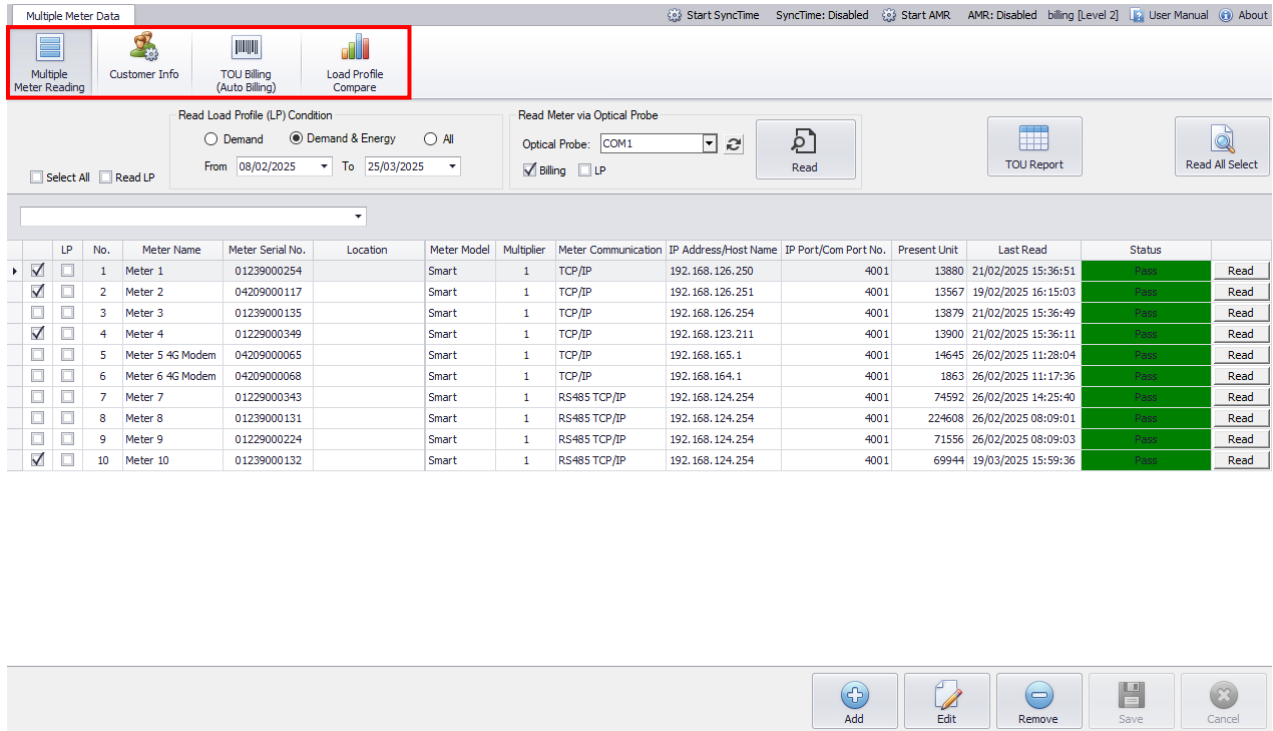


Picture 110: Save reading report file (XLSX)

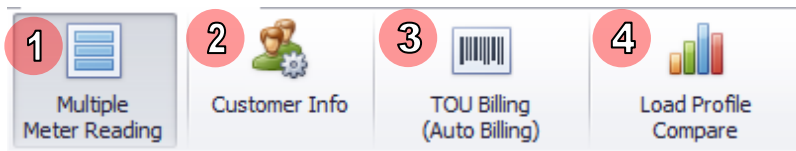
5) The report file will be exported.

5 Multiple Meter Data

UX EvaluationPro software consist of 4 menus for Multiple Meter Data



Picture 111: UX EvaluationPro main screen for Multiple Meter Data

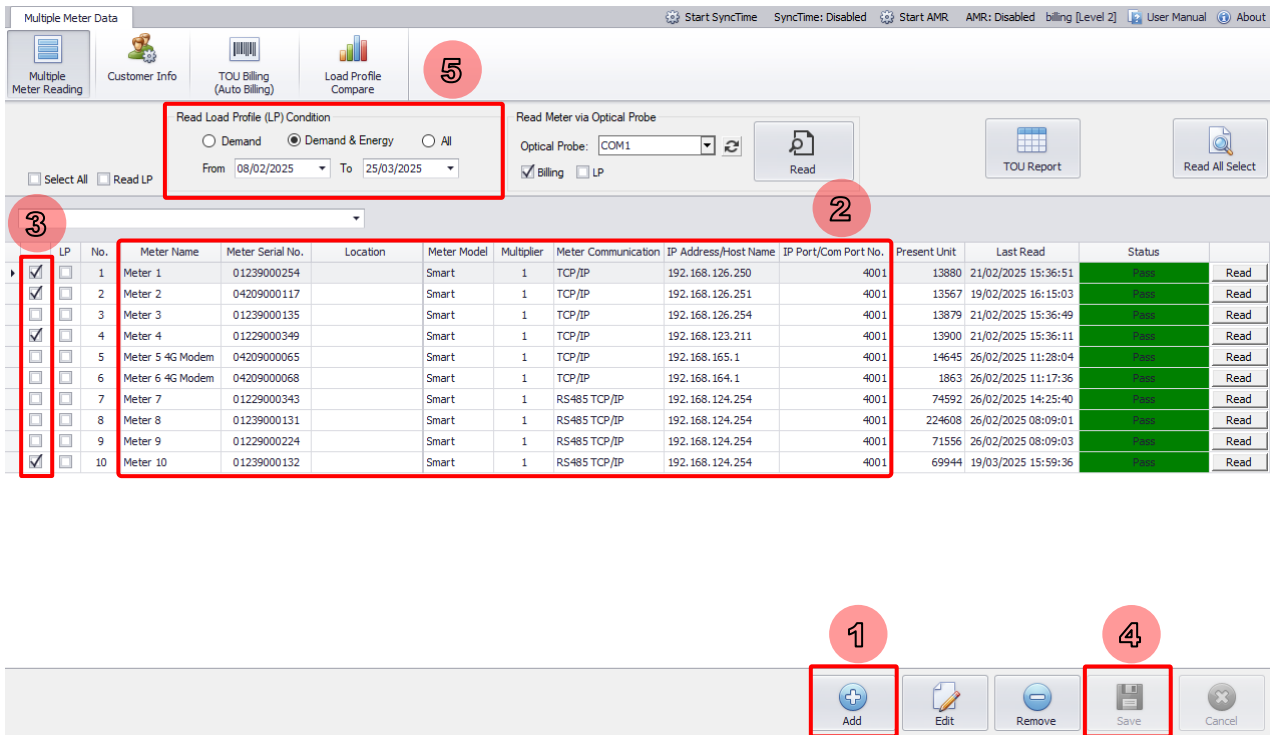


Picture 112: UX EvaluationPro menu

- 1) **Multiple Meter Reading:** Use for add/setup or edit meter information e.g., meter name, meter serial number, location, meter communication, IP address, IP Port for reading Multiple Meter Data.
- 2) **Customer Info:** Use for defining customer and price information with meter serial number e.g., customer name, address, location, customer number, billing type, peak price, off-peak price, holiday price for issue billing.
- 3) **TOU Billing (Auto Billing):** Use for issue billing and exporting billing data as billing type mapping. This menu also able to export data to export data to *.xlsx file
- 4) **Load Profile Compare:** Use for Compare between load profiles.

5.1 Multiple Meter Reading

- 1) Click **Add** button to add new meter in list.
- 2) To input required meter information data in data grid.

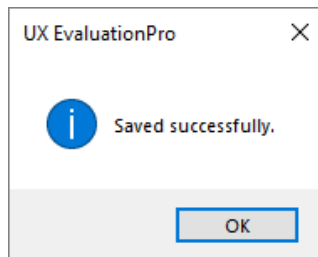


Picture 113: Multiple Meter Reading screen

Note: Software has 3 communications for meter connection as

- **RS485 TCP/IP:** IP Address/Host Name, and IP Port/Com Port No. are required
- **RS485 Comport:** IP Port/Com Port No. is required
- **TCP/IP:** IP Address/Host Name, and IP Port/Com Port No. are required

- 3) Click **Save** button. If save data complete software will show message “Saved successfully”.



Picture 114: Add meter complete

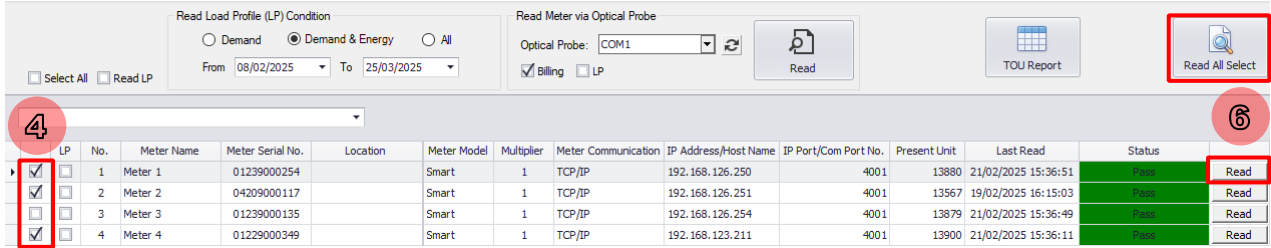
- 4) Select checkbox row that want to read meter data

	LP	No.	Meter Name	Meter Serial No.
▶	<input checked="" type="checkbox"/>	1	Meter 1	01239000254
	<input checked="" type="checkbox"/>	2	Meter 2	04209000117

Picture 115: Checkbox selection

- 5) Click select Load profile type and date to read, after read file save Load profile at folder name is “**MultipleTemplate**”

6) Click **Read** button, or select checkbox for read all select.



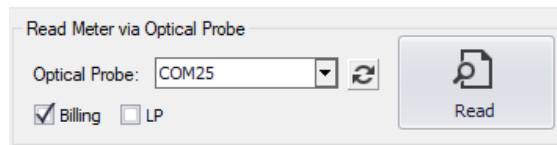
Picture 116: Read meter complete

After Reading, available status as table below

Status	Cause	BG Color
Blank	Default	White
Fail open port	Cannot open communication port	Red
Meter not response	Meter is disconnect	Red
Fail Connect	Password wrong	Red
Fail Project Name	Project name not support	Red
Meter not support	Meter model not support	Red
Meter not support TOU Demand Billing	Select Billing type mismatched	Red
No Billing	Meter no billing	Red
User Stop	User stop reading	Red
Fail	Some item fail while reading	Red
Pass	Pass reading	Green

Software support to read meter via Optical probe

This function, use for reading meter one by one that connect meter via Optical probe and can select to read both Billing and LP

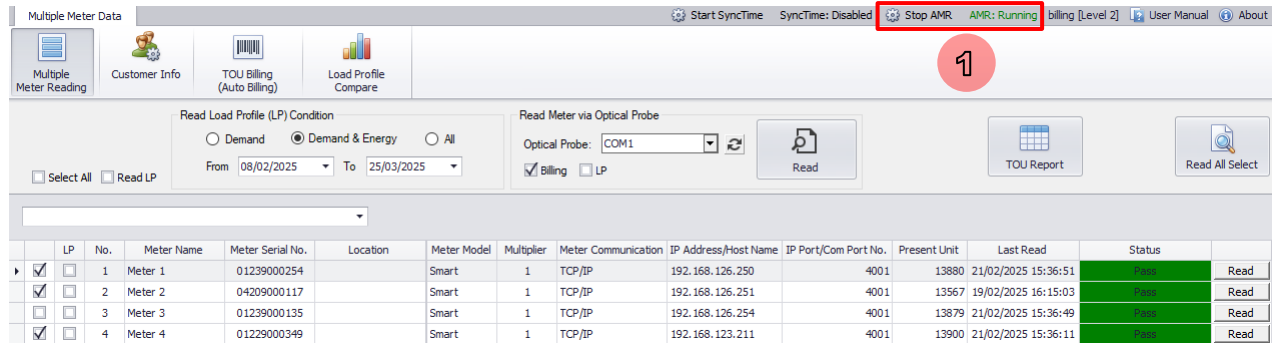


Picture 117: Read Meter via Optical Probe group

5.1.1 AMR Reading

*AMR reading will only function if meters are added to the list, checkbox are selected, and the checkbox selections are saved.

1) Click **Start AMR** button, AMR status show 'Running'



Picture 118: AMR Status show 'Running'

Note: AMR function does not support RS485 ComPort communication.

5.1.2 TOU Report

*TOU Report relies on the AMR Reading operational

- 1) Select **Report From** date duration picker.
- 2) Highlight in row for selection meter.
- 3) Click Show Report button or double click in row for show information in data grid.
- 4) Select Load Profile tab or TOU tap.

TOU Report 1.0.0

Report From 01/12/2024 To 31/12/2024

Peak is Rate 1
Off-Peak is Rate 2
Holiday is Rate 3

Select: [01229000343] Meter 7

Meter Name	Serial No.	Location	Last LP Record	Time Stamp	Flag	Energy kWh (mp)	Peak	Off-Peak	Holiday
Meter 1	01239000254		20/01/2025 09:45	01/12/2024 10:45		15.440			15.440
Meter 2	04209000117		20/01/2025 09:45	01/12/2024 11:00		15.390			15.390
Meter 3	01239000135		20/01/2025 09:45	01/12/2024 11:15		15.440			15.440
Meter 4	01229000349		20/01/2025 09:45	01/12/2024 11:30		15.410			15.410
Meter 5	04209000065		20/01/2025 09:45	01/12/2024 11:45		15.450			15.450
Meter 6	04209000068		20/01/2025 09:45	01/12/2024 12:00		15.450			15.450
Meter 7	01229000343		20/01/2025 09:45	01/12/2024 12:15		15.490			15.490
Meter 8	01239000131		20/01/2025 09:45	01/12/2024 12:30		15.440			15.440
Meter 9	01229000224		20/01/2025 09:45	01/12/2024 12:45		15.430			15.430
Meter 10	01239000132		20/01/2025 09:45	01/12/2024 13:00		15.410			15.410
Meter 11	04209000118		20/01/2025 09:45	01/12/2024 13:15		15.410			15.410
				01/12/2024 13:30		15.360			15.360
				01/12/2024 13:45		16.130			16.130
				01/12/2024 14:00		15.920			15.920
				01/12/2024 14:15		15.370			15.370
				01/12/2024 14:30		15.310			15.310
				01/12/2024 14:45		15.380			15.380
				01/12/2024 15:00		15.370			15.370
				01/12/2024 15:15		15.370			15.370
				01/12/2024 15:30		15.330			15.330
				01/12/2024 15:45		15.400			15.400
				01/12/2024 16:00		15.390			15.390
				01/12/2024 16:15		15.460			15.460
				01/12/2024 16:30		15.340			15.340
				01/12/2024 16:45		15.450			15.450
				01/12/2024 17:00		15.380			15.380
				01/12/2024 17:15		15.430			15.430
				01/12/2024 17:30		15.420			15.420
				01/12/2024 17:45		15.510			15.510
				01/12/2024 18:00		15.580			15.580
				01/12/2024 18:15		15.540			15.540
						37,481.060	12,584.100	10,937.870	13,959.090

Copyright © 2021-2025 Mitsubishi Electric Automation (Thailand) Co., Ltd. All Rights Reserved

Picture 119: Show TOU Report screen and Load Profile tab screen

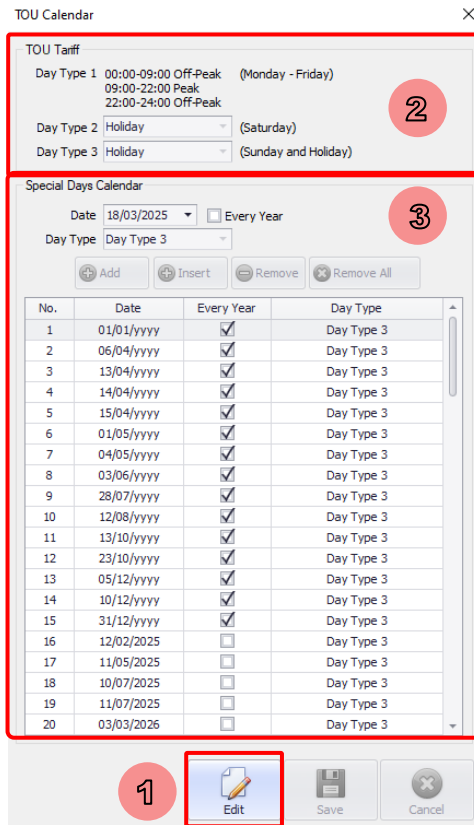
UX EvaluationPro Software User Manual Standard Package

Load Profile		TOU		
Date	Peak	Off-Peak	Holiday	Total
01/12/2024	0.000	0.000	834.570	834.570
02/12/2024	791.820	676.590	0.000	1,468.410
03/12/2024	793.610	673.810	0.000	1,467.420
04/12/2024	798.870	676.840	0.000	1,475.710
05/12/2024	0.000	0.000	1,476.830	1,476.830
06/12/2024	790.110	673.910	0.000	1,464.020
07/12/2024	0.000	0.000	1,468.940	1,468.940
08/12/2024	0.000	0.000	1,473.880	1,473.880
09/12/2024	791.150	675.150	0.000	1,466.300
10/12/2024	0.000	0.000	1,466.670	1,466.670
11/12/2024	798.040	673.700	0.000	1,471.740
12/12/2024	784.250	673.880	0.000	1,458.130
13/12/2024	794.180	678.870	0.000	1,473.050
14/12/2024	0.000	0.000	1,464.250	1,464.250
15/12/2024	0.000	0.000	1,462.060	1,462.060
16/12/2024	784.320	668.990	0.000	1,453.310
17/12/2024	785.520	668.670	0.000	1,454.190
18/12/2024	791.750	667.250	0.000	1,459.000
19/12/2024	778.300	674.870	0.000	1,453.170
20/12/2024	788.030	665.690	0.000	1,453.720
21/12/2024	0.000	0.000	1,470.440	1,470.440
22/12/2024	0.000	0.000	1,473.360	1,473.360
23/12/2024	490.070	570.990	0.000	1,061.060
24/12/2024	489.810	412.430	0.000	902.240
25/12/2024	492.920	413.850	0.000	906.770
26/12/2024	352.410	374.200	0.000	726.610
27/12/2024	244.330	208.850	0.000	453.180
28/12/2024	0.000	0.000	455.910	455.910
29/12/2024	0.000	0.000	455.980	455.980
30/12/2024	244.610	209.330	0.000	453.940
31/12/2024	0.000	0.000	456.200	456.200
	12,584.100	10,937.870	13,959.090	37,481.060

Picture 120: Show TOU tab screen

5.1.2.1 TOU Calendar

1) Click **Edit** button.



Picture 121: Show TOU Calendar screen

2) To set component in TOU tariff group:

Group to display and select TOU tariff for each day type which are:

No.	Name	Description
1.	Day Type 1	Day type 1 is Monday to Friday, the rate will be: 00:00 – 09:00 is Off-Peak rate. 09:00 – 22:00 is Peak rate. 22:00 – 24:00 is Off-Peak rate.
2.	Day Type 2	Day type 2 is Saturday, the rate will be: Off-Peak or Holiday rate. (Default: Holiday)
3.	Day Type 3	Day type 3 is Sunday and Holiday, the rate will be: Off-Peak or Holiday rate. (Default: Holiday)

3) To set component in special day group:

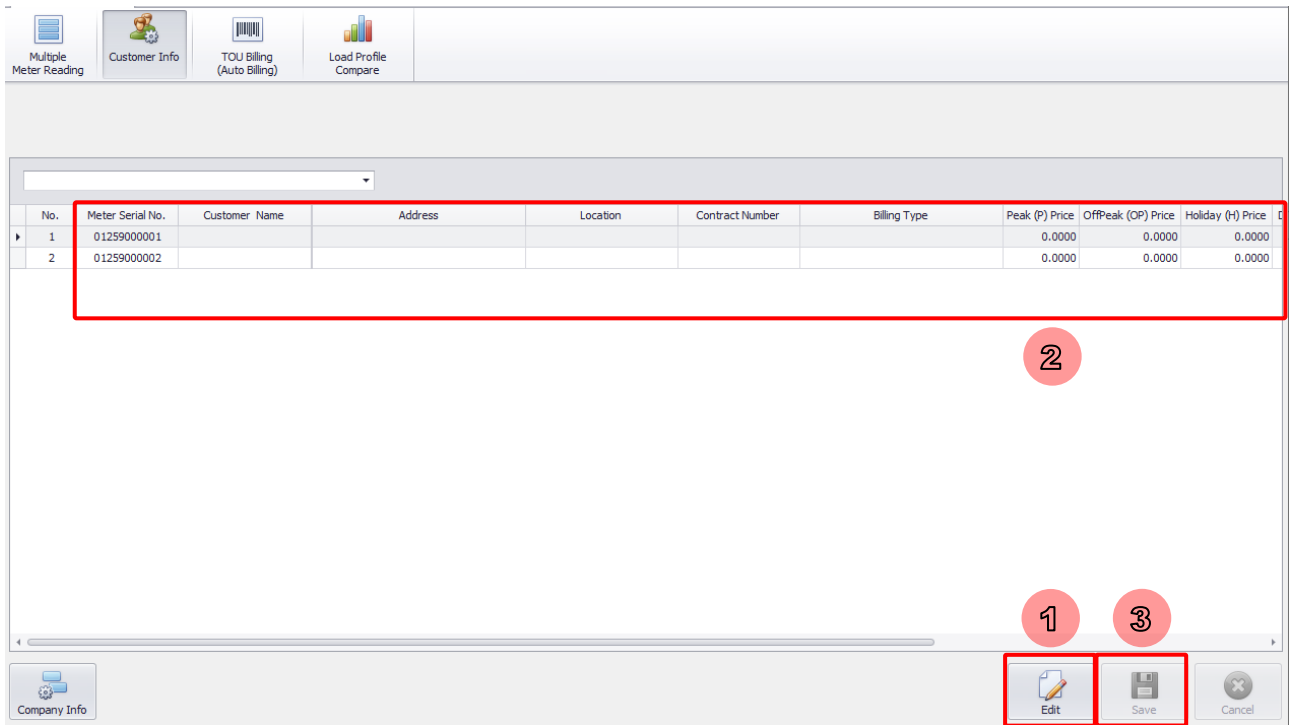
Group to display special day that will be use rate by day type selection. The configuration consists of:

No.	Name	Description															
1.	Date picker	A date picker to select special day for adding to special day list grid view. (Default: Today)															
2.	Every year checkbox	A checkbox to make adding special day will be used in the TOU calendar every year. (Default: Uncheck)															
3.	Day type combo box	A combo box to select day type for adding special day, consists of: Day Type 2 and Day Type 3. (Default: Day Type 3)															
4.	Add button	A button to add selected special day to special day list grid view.															
5.	Insert button	A button to insert the selected special day above select item in the special day list grid view.															
6.	Remove button	A button to remove the selected special day in special day list grid view.															
7.	Remove all button	A button to remove all special days in special day list grid view.															
8.	Special day list grid view	<p>A grid view to display special day list, columns are:</p> <table border="1" style="width: 100%; border-collapse: collapse;"> <thead> <tr> <th>No.</th> <th>Column Name</th> <th>Description</th> </tr> </thead> <tbody> <tr> <td>8.1</td> <td>No.</td> <td>Number of special days.</td> </tr> <tr> <td>8.2</td> <td>Date</td> <td>Date of special day.</td> </tr> <tr> <td>8.3</td> <td>Every Year</td> <td>Flag to use special day every day. (If every year is checked the year of the date will be shown as yyyy)</td> </tr> <tr> <td>8.4</td> <td>Day Type</td> <td>Day type of special day.</td> </tr> </tbody> </table> <p>Note: Special day list is the same as UX EvaluationPro's special day in calendar setting.</p> <p>Note 2: Special day list has 100 maximum added items.</p>	No.	Column Name	Description	8.1	No.	Number of special days.	8.2	Date	Date of special day.	8.3	Every Year	Flag to use special day every day. (If every year is checked the year of the date will be shown as yyyy)	8.4	Day Type	Day type of special day.
No.	Column Name	Description															
8.1	No.	Number of special days.															
8.2	Date	Date of special day.															
8.3	Every Year	Flag to use special day every day. (If every year is checked the year of the date will be shown as yyyy)															
8.4	Day Type	Day type of special day.															

Note: The settings on TOU Calendar screen only affect the data on the TOU Report screen.

5.2 Customer Info

- 1) Click **Edit** button.
- 2) To edit customer information data in data grid, click **Save** button.

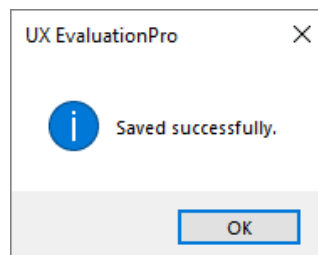


Picture 122: Customer Info screen

Note: Software has 5 billing type as below

- TOU Billing (2 Rate) (Default)
- TOU Demand Billing (2 Rate)
- TOU Billing (3 Rate)
- TOU Demand Billing (3 Rate)
- Flat Rate

- 3) Click **Save** button. If save data complete software will show message “Saved successfully”.

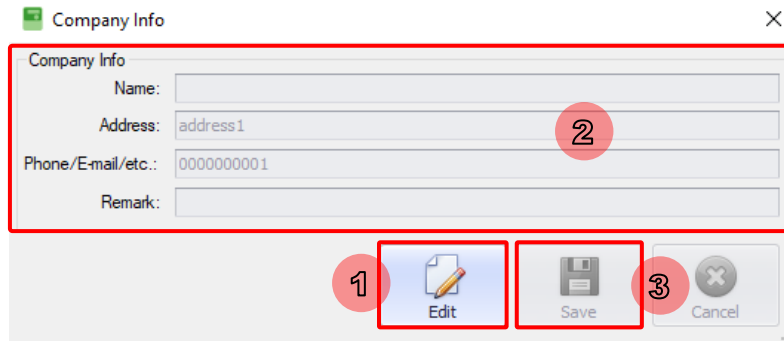


Picture 123: Save customer info complete

5.2.1 Company Info

Note: Click **Company** button for input company information.

- 1) Click **Edit** button.
- 2) Input company data.
- 3) Click **Save** button, software will be saved data of Company Info.

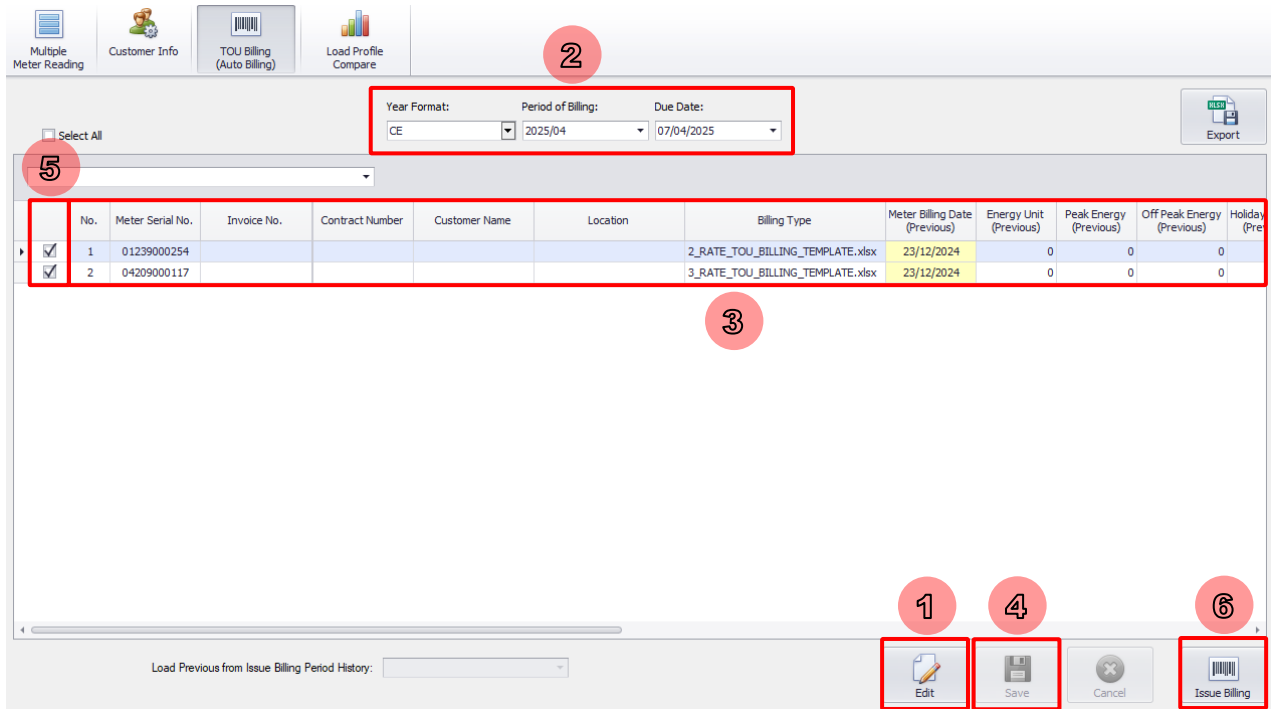


Picture 124: Company Info screen

5.3 TOU Billing (Auto Billing)

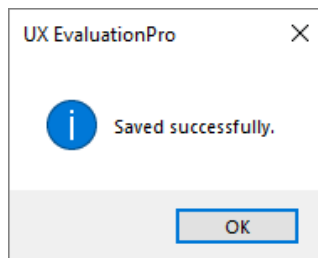
Note: Before Issue Billing, let's user set Price and Information for each billing type by **Customer Info** menu

- 1) Click **Edit** button.
- 2) Select Period of Billing, Year Format, and Due Date.
- 3) Validate Data for issue TOU billing.



Picture 125: TOU Billing (Auto Billing) screen

- 4) Click **Save** button. If save data complete software will show message “Saved successfully”.



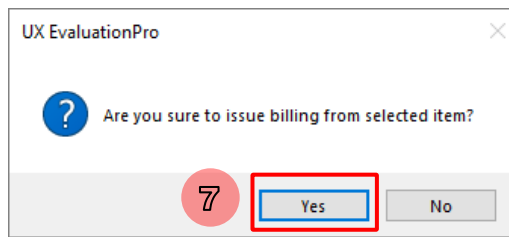
Picture 126: Save customer info complete

- 5) Select checkbox row that want to issue billing then click **Issue Billing** button.

	No.	Meter Serial No.
<input checked="" type="checkbox"/>	1	00000000001
<input checked="" type="checkbox"/>	2	00000000002

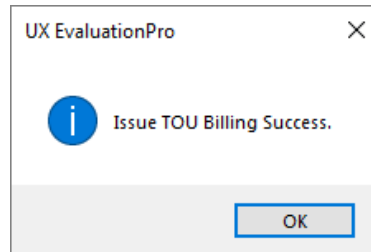
Picture 127: Checkbox selection

- 6) click **Issue Billing** button, software will show question message box to confirm issue billing.



Picture 128: Issue billing confirmation message box



7) Click Software will be created invoice of billing data as selected.



Picture 129: Issue TOU Billing complete

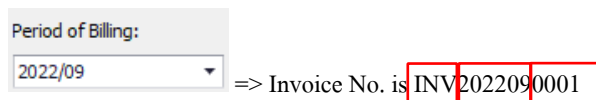
Software will generate file name automatically. Default file name is

[Invoice No.]_[Meter Serial No.]_[Contract No.]_[Customer Name].xlsx

 INV2022090001_00000000001_C0001_Customer1.xlsx
 INV2022090002_00000000002_C0002_Customer2.xlsx

Picture 130: Save customer info complete

Invoice No. was created as Prefix “INV” + Period of Billing + Running No.



● **Billing and Roll back Calculation example**

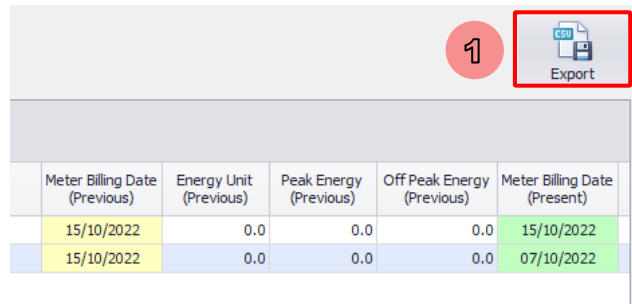
$$\text{Energy Unit (Total)} = \text{Energy Unit (Present)} - \text{Energy (Previous)}$$

Result Energy Unit

No.	Input Energy Unit (Previous)	Input Energy Unit (Present)	CT	R	Result Column Energy Unit (Total)	Background color Energy Unit (Total)
1.	0	100	1		100	No color
2.	0.0	100.0	1		100.0	No color
3.	0.00	100.00	1		100.00	No color
4.	0.000	100.000	1		100.000	No color
5.	50	100	1		50	No color
6.	50.0	100.0	1		50.0	No color
7.	50.00	100.00	1		50.00	No color
8.	50.000	100.000	1		50.000	No color
9.	99990	100	1		-99890	Red
10.	99990	100	1	<input checked="" type="checkbox"/>	110	No color
11.	99990.0	100.0	1		-99890.0	Red
12.	99990.0	100.0	1	<input checked="" type="checkbox"/>	110.0	No color
13.	99990.00	100.00	1		-99890.00	Red
14.	99990.00	100.00	1	<input checked="" type="checkbox"/>	110.00	No color
15.	99990.000	100.000	1		-99890.000	Red
16.	99990.000	100.000	1	<input checked="" type="checkbox"/>	110.000	No color
17.	0	100	20		200	No color
18.	0.0	100.0	20		200.0	No color
19.	0.00	100.00	20		200.00	No color
20.	0.000	100.000	20		200.000	No color
21.	50	100	20		1000	No color
22.	50.0	100.0	20		1000.0	No color
23.	50.00	100.00	20		1000.00	No color
24.	50.000	100.000	20		1000.000	No color
25.	99990	100	20		-1997800	Red
26.	99990	100	20	<input checked="" type="checkbox"/>	2200	No color
27.	99990.0	100.0	20		-1997800.0	Red
28.	99990.0	100.0	20	<input checked="" type="checkbox"/>	2200.0	No color
29.	99990.00	100.00	20		-1997800.00	Red
30.	99990.00	100.00	20	<input checked="" type="checkbox"/>	2200.00	No color
31.	99990.000	100.000	20		-1997800.000	Red
32.	99990.000	100.000	20	<input checked="" type="checkbox"/>	2200.000	No color

- **Export Meter Data for TOU Billing**

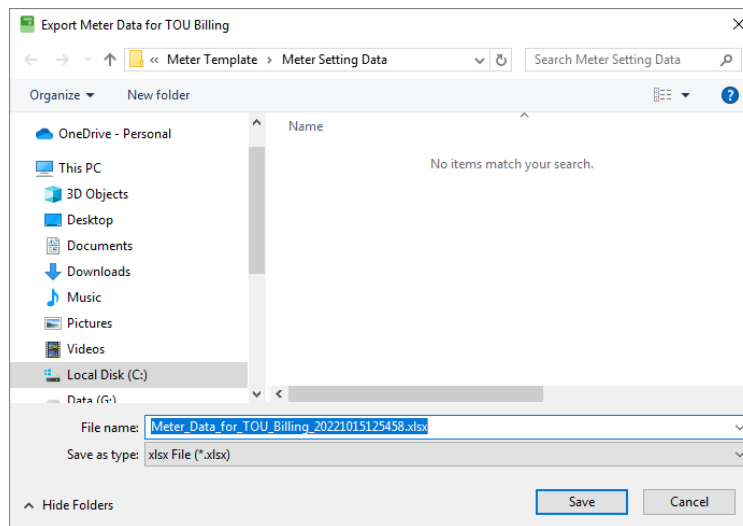
1) To export meter data for TOU billing report file (.xlsx), click **Export** button.



Picture 131: Export Meter Date for TOU Billing

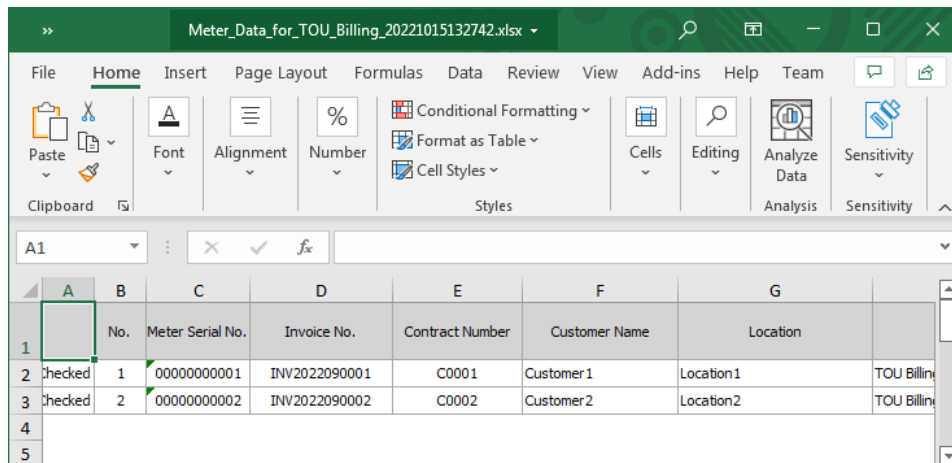
2) Select path for exporting, software will generate file name automatically.

Default file name is “Meter_Data_for_TOU_Billing_YYYYMMDDHHmmss.xlsx”



Picture 132: Export Meter Date for TOU Billing report file

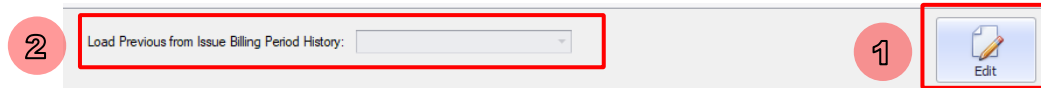
3) The report file will be exported.



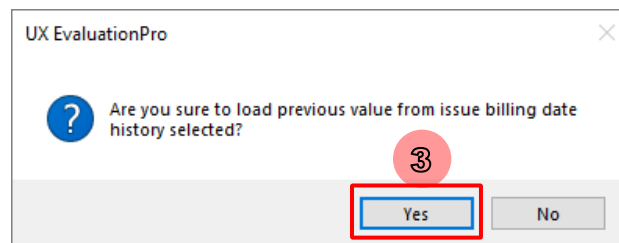
Picture 133: Meter Date for TOU Billing report file

- **Load Previous from Issue Billing Period History**

- 1) Click **Edit** button for enable Load Previous from Issue Billing Period History list.
- 2) Select **Load Previous from Issue Billing Period history**, software will show confirmation message box.
- 3) Click Yes on message box, software will load previous value of Meter billing Date (Previous), Energy Unit (Previous), Peak Energy (Previous), Off Peak Energy (Previous), and Holiday Energy (Previous) from issue billing as selected.



Picture 134: Load Previous from issue billing period history



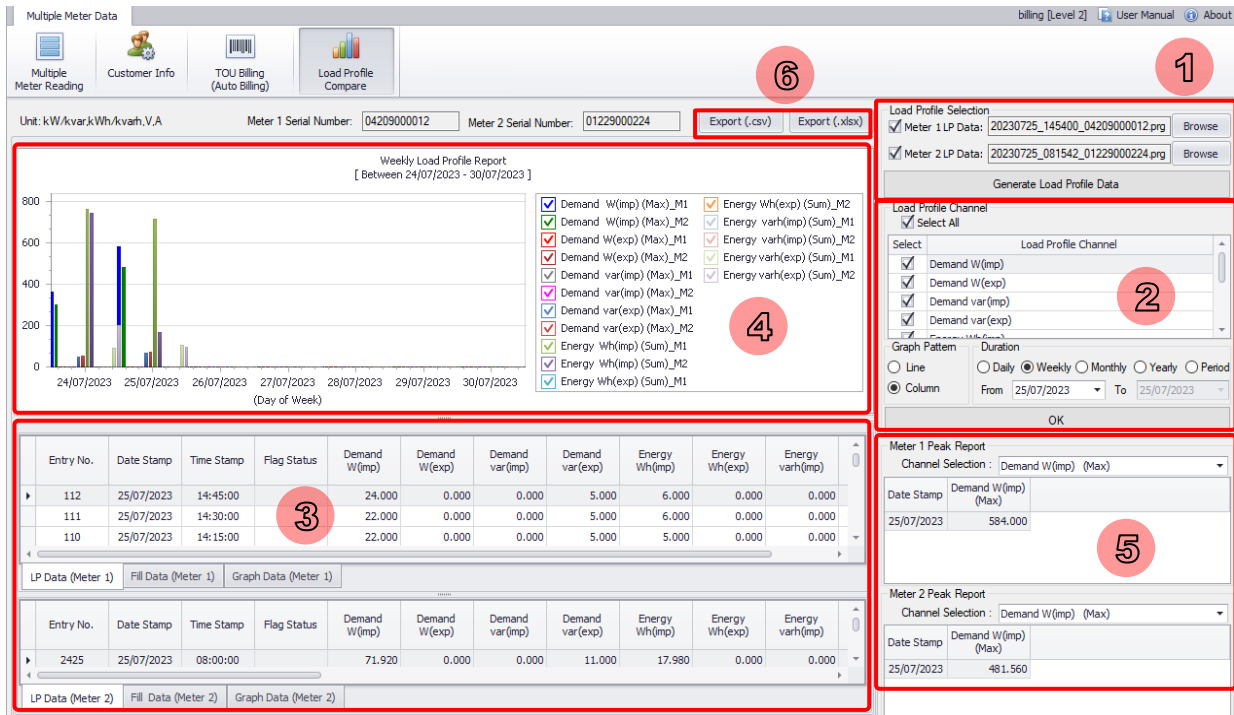
Picture 135: Load Previous value from issue billing period confirmation message box

5.4 Load Profile Compare

Software used for compare between Load Profile from Meter. Can view Demand (Import or Export), Energy (Import or Export), Voltage, Current and PF

1) Click “Browse” to input LP Data of Meter 1 and Meter 2 then click “Generate Load Profile Data”

Note: Directory for browse of LP Data: ../UX EvaluationPro/MultipleTemplate

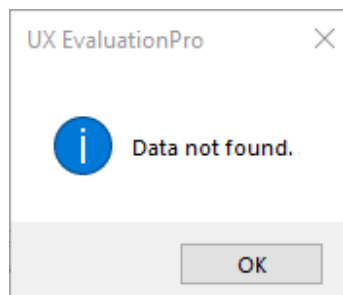


Picture 136: Load Profile Compare Screen

2) Select items to view LP data Meter 1 and Meter 2 by clicking the select item box from "Load Profile Channel", You can click "Graph Pattern" to select a graph plot between "Line" and "Column" and click "Duration" to view the period of information in which you are interested, which has 5 items.

- 2.1. Daily is selected date
- 2.2. Weekly is Monday to Sunday of the selected date
- 2.3. Monthly is select Month
- 2.4. Yearly is select year
- 2.5. Period is every interval of the selected date (select for looking period have maximum is 7 day only)

After already select "Load Profile Channel", "Graph Pattern" and "Duration", Click on “OK” to show Load Profile Data and plot “Load Profile Report” and if you selected duration has no Load profile data, the message box below will be shown.



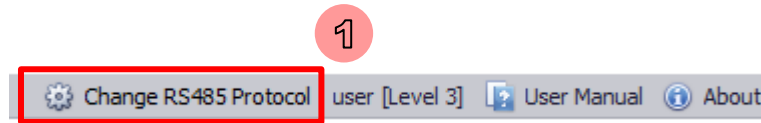
Picture 137: Don't have data on Load profile data

- 3) Load Profile Data (Meter 1 & Meter 2) is show data from file browse, which has 3 items
 - 3.1. **“LP Data”** is All Load profile data of each Meter
 - 3.2. **“Fill Data”** is Load profile data by fill zero to value and fill date and time record was missing of each Meter
 - 3.3. **“Graph Data”** is Data for plot **“Load Profile Report”**
- 4) Load Profile Report is Load profile data of Meter 1 and Meter 2 plotted as graphs.
- 5) The Peak Report (Meter 1 and Meter 2) shows the peak value for the selected duration by Click the drop-down **“Channel Selection”** to select item data to view peak value
- 6) Export is export Load profile compare to .csv file or .xlsx file by example is
Compare Data_01229000224_LP Data_04209000012_LP Data_20230725140632.csv or
Compare Data_01229000224_LP Data_04209000012_LP Data_20230725141442.xlsx

6 Broadcast Change RS485 Protocol

Software used for broadcast changes protocol between DLMS and Modbus RTU

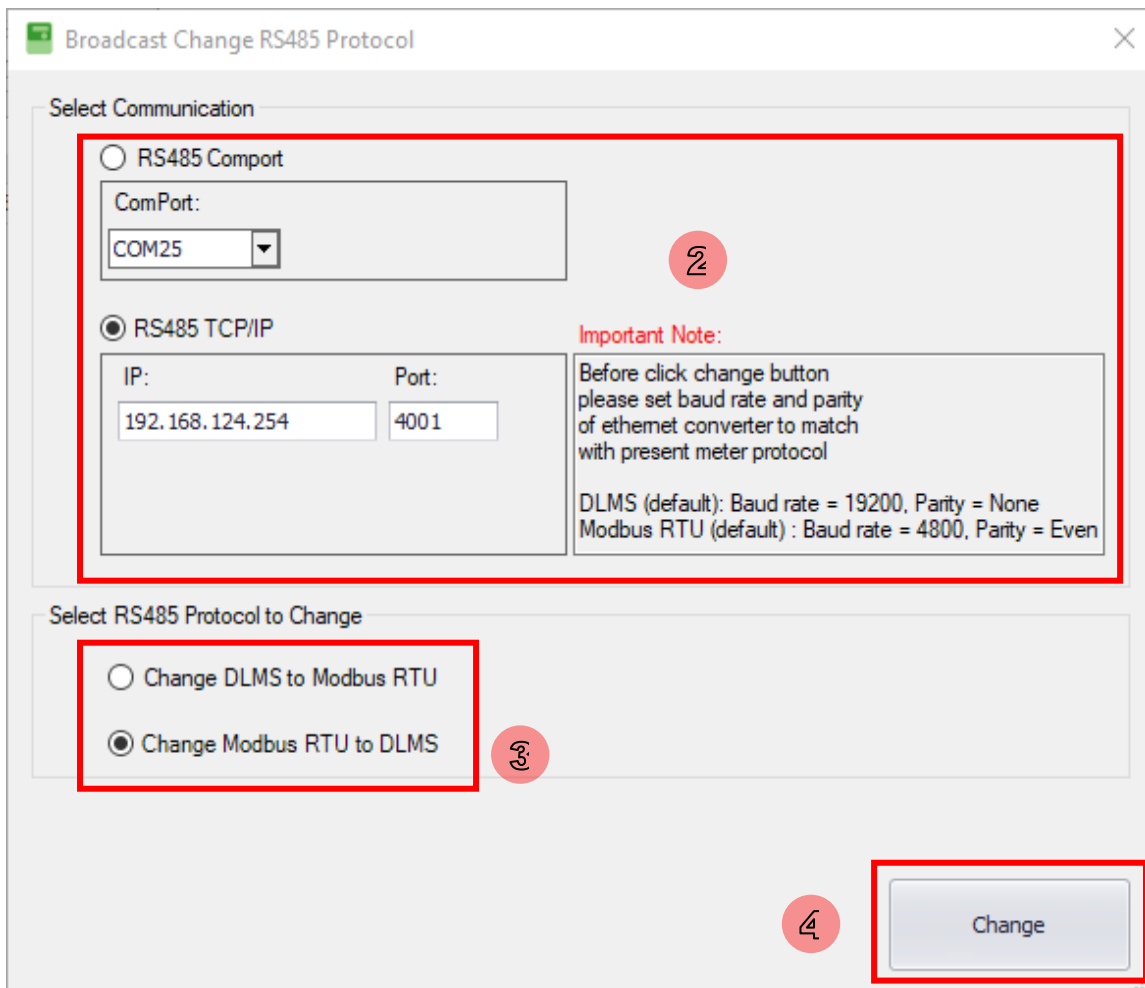
- 1) UX EvolutionPro software have function for broadcast change protocol by click on “Change RS485 Protocol”.



Picture 138: Change RS485 Protocol button

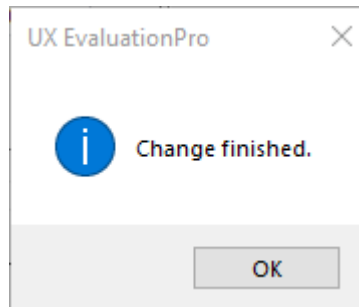
- 2) Click select Communication to connect to a converter between “RS485 Comport” and “RS485 TCP/IP”.

Can view detailed Communication changing protocol on “Important Note”



Picture 139: Broadcast Change RS485 protocol

- 3) Click select protocol to change by to have 2 radio buttons is “**Change DLMS to Modbus RTU**” and “**Change Modbus RTU to DLMS**”.
- 4) Click “**Change**” button to change protocol and show message box below.

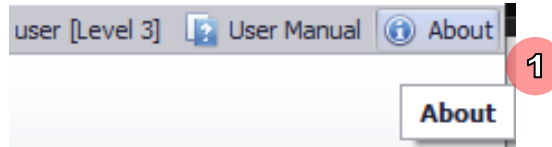


Picture 140: Broadcast Change RS485 protocol successfully

Recommend: After a protocol has been set, you need to check protocol displayed on the LCD of the Meters

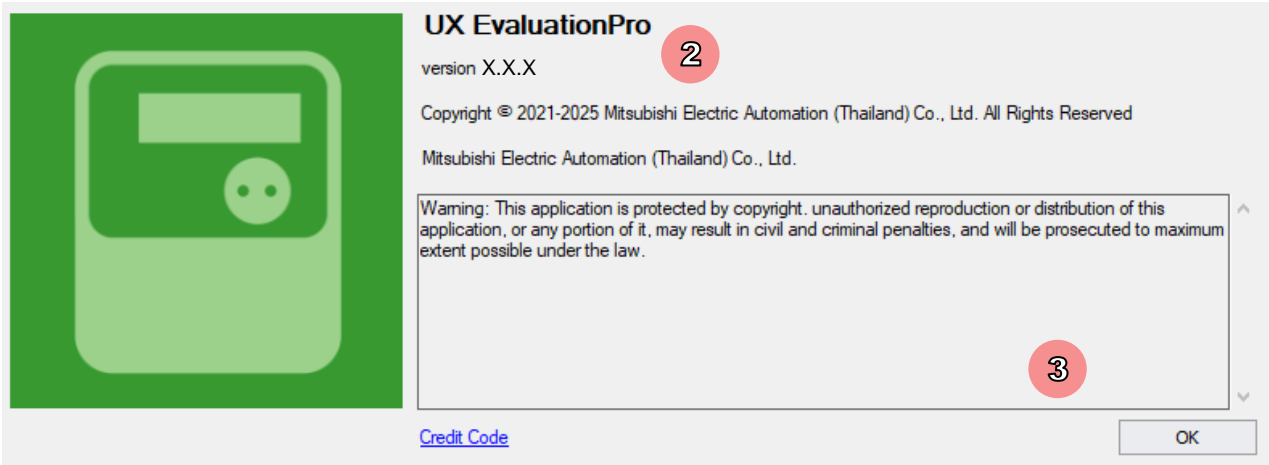
7 About Software

1) To show software information click **About** button.



Picture 141: About button

2) Software will show About screen.

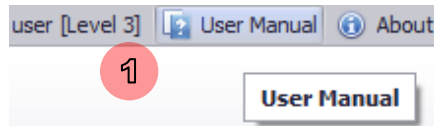


Picture 142: About screen

3) Click **OK** button to close this screen.

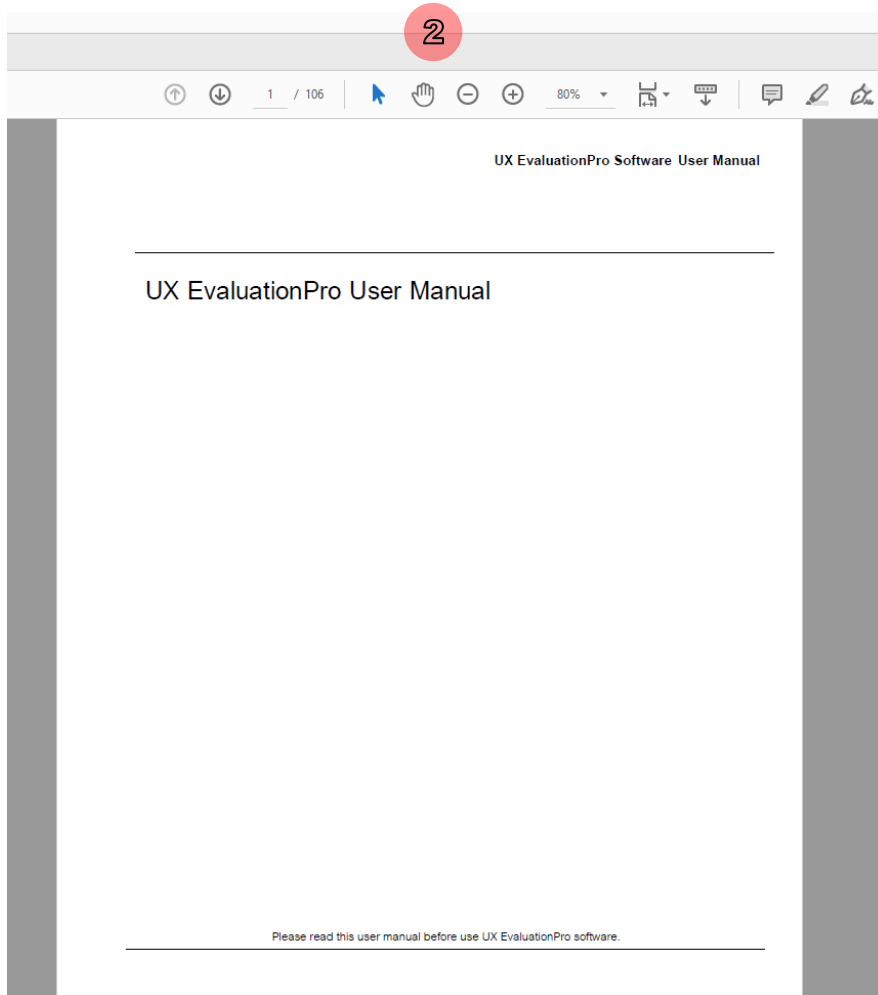
8 User Manual

1) To UX EvaluationPro user manual click **User Manual** button.



Picture 143: User Manual button

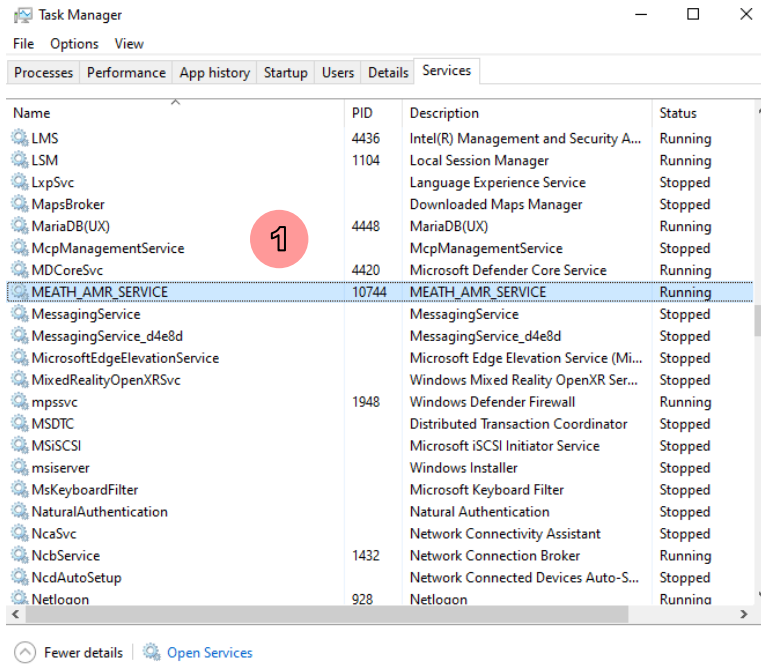
2) Software will show user manual.



Picture 144: Show user manual

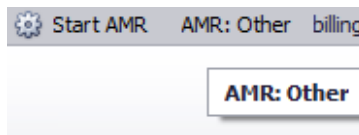
9.1 AMR Service

1) After installing UX EvaluationPro Software, the MEATH_AMR_SERVICE will be installed on your PC.



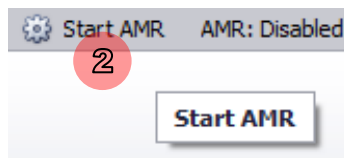
Picture 145: Show AMR Service on Task Manager menu

Note: If you stop **MEATH_AMR_SERVICE** via Task Manager while the AMR is running, the AMR service will fail and upon click on stop AMR, the AMR status will show 'Other'



Picture 146: AMR Status show 'Other'

2) To Start AMR Service click **Start AMR** button.



Picture 147: Show Start AMR button

3) To Stop AMR Service click **Stop AMR** button.



Picture 148: Show Stop AMR button

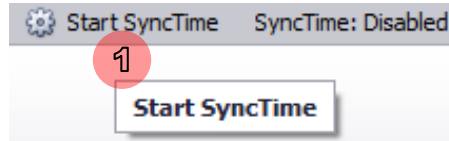
*Note 2: AMR reading will only function if meters are added to the list, checkbox are selected, and the checkbox selections are saved

9.2 SyncTime

*Note: Ensure that your computer's time is accurate with the current time before you start sync time.

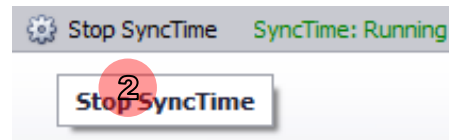
*Note 2: If AMR Service not running, SyncTime is not synchronize

1) To Start SyncTime Service click **Start SyncTime** button.



Picture 149: Show Start SyncTime button

2) To Stop SyncTime Service click **Stop SyncTime** button.

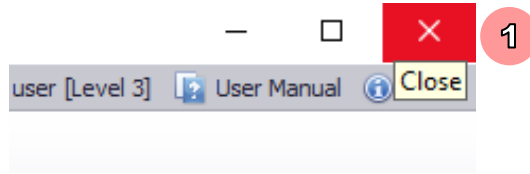


Picture 150: Show Stop SyncTime button

Note 3: The SyncTime function automatically sets the date and time for the checked meters, according to PC time, during every AMR reading when the meter time and PC time differ by more than 10 seconds.

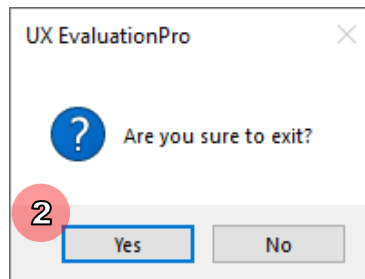
10 Exit Software

1) To exit software, click **Close** button.



Picture 151: Close button

2) Software will show question message “Are you sure to exit?” click **Yes** button.



Picture 152: Confirm to exit software

3) Software will close screen and exit.

Note: During communicating with meter (reading, setting, executing) should wait until finish operation and exit software.

11 Troubleshooting

Problem	Cause	Solution
1. Connection fails.	<ul style="list-style-type: none"> ● Wrong connection of optical probe. ● Select wrong COM port. ● Wrong connection of RS232 ● Wrong connection of TCP/IP ● Bluetooth signal is out of range. 	<ul style="list-style-type: none"> ● Optical Probe <ol style="list-style-type: none"> 1. Check Optical probe connect with meter in correct position. 2. Check USB port of optical probe has already connected with PC, or try to change connection to new USB port of PC. 3. Try to initialize COM port again by selecting Comport in software. 4. Read meter again.
2. SNRM fails.	<ul style="list-style-type: none"> ● Wrong connection of optical probe. ● Cannot disconnect from last communication. ● Wrong connection of RS232 ● Wrong connection of TCP/IP ● Bluetooth signal is out of range. 	<ul style="list-style-type: none"> ● RS232 <ol style="list-style-type: none"> 1. Check USB port of RS232 has already connected with PC, or try to change connection to new USB port of PC 2. Try to initialize COM port again by selecting Comport in software. 3. Read meter again. ● TCP/IP <ol style="list-style-type: none"> 1. Check connection of Ethernet converter and PC, or try to change configuration of Ethernet converter. 2. Try to edit IP address and port of Ethernet converter. 3. Read meter again. ● Bluetooth <ol style="list-style-type: none"> 1. Check distance and obstacle between PC and meter. 2. Try to move PC and meter to closer and less obstacle in area. 3. Pair and read meter again.
3. Temporary fails.	<ul style="list-style-type: none"> ● Meter cannot answer at the moment. 	<ol style="list-style-type: none"> 1. Wait a few minutes and read meter again. 2. Close software, wait a few minutes, open software and read meter again.

UX EvaluationPro Software User Manual Standard Package

Problem	Cause	Solution
4. Cannot login software.	<ul style="list-style-type: none"> ● Username or password is incorrect. ● License file miss or broken. 	<ol style="list-style-type: none"> 1. Check license file “License.lic” exist, default path “C:\MEATH\UX EvaluationPro” 2. Update new license file.
5. Cannot connect meter.	<ul style="list-style-type: none"> ● Meter password is incorrect. 	<ol style="list-style-type: none"> 1. Modify meter password in license file and update license file to use correct meter password.
6. Cannot connect database, database error.	<ul style="list-style-type: none"> ● Not install SQL CE. ● SQL CE has a problem. ● MariaDB has a problem 	<ol style="list-style-type: none"> 1. In the case not install SQL CE yet, please install SQL CE. 2. For case SQL CE has a problem, please uninstall and reinstall SQL CE. 3. For case MariaDB has a problem, please contact Meter Technical Support (Tel. 0-2540-6992 or Line ID support.025406992, Mon – Fri 8:00 a.m. to 5:00 p.m.).